



EUGENE NEWSLETTER

PCjr CLUB

Volume 1,
Number 5
October 1985

P. O. BOX 3695, EUGENE, OR

97403

REMEMBER, EVERY SECOND THURSDAY

MARK EVERY SECOND THURSDAY OF EACH MONTH ON YOUR CALENDAR FOR THE PCjr MEETINGS. Meetings will start formally at 7:00pm and doors will be open at 6:30pm for "early birds" and set-up at the Library of IDA PATTERSON SCHOOL, 1510 West 15th Street Eugene. (Notice will be made of any changes). Meeting dates for this year are: Oct. 10, Nov. 14, Dec. 12, and during 1986 are: Jan. 9, Feb. 13, Mar. 13, Apr. 10, May 8, and June 13. SEE YOU THERE? COME ONE AND ALL!!!

PROSPECTIVE MEMBERS AND GUESTS

are welcome to attend up to three meetings without obligation. THEREAFTER, you are requested to submit the \$20.00 annual dues per household. Most of us attending on a regular basis have adhered to this stipulation. There are, however, a few of us who have yet to take care of this matter. If you live outside our meeting area, but still want the club's NEWSLETTER, you can continue to get it for \$12.00/year (11 issues). Please make your checks payable to: THE EUGENE PCjr CLUB, P.O.Box 3695, Eugene, OR 97403.

PCjr NEWSLETTER

The PCjr NEWSLETTER welcomes all types of materials for inclusion as space permits. Neither the Club nor the editor guarantees the accuracy of included materials, but all "reasonable" effort will be made to be accurate. Submit your materials, preferably printed in a "compressed" mode to fit a 3 3/8 inch column width. Send disk materials, if you must, but PLEASE identify the software system and give Ye Olde Editor a hint or two at how to boot it up? This issue came on 5 disks, five formats, and four programs! At 2:30am this seems more formidable than it otherwise might, but have a heart! W.R.

DOUBLE-SIDED DOS DISKS

A DOS disk is a necessary tool for your computer, and it's probably the disk you use the most. That makes it a very handy place

to put some of the utility programs that you use the most, too! But a DOS disk from IBM comes in a single-sided format, so that it will be compatible with older computers with a single sided drive,

Continued on page 3

WOW! HOW?

win 512k,
WITH PRINTER PORT,
CLOCK AND CALENDAR.

SEE DETAILS INSIDE
ON PAGE 3.

IMPULSE

COMPUTER

PRODUCTS

MONTHLY AGENDAS:

OCTOBER - 1. What is a modem?

2. Differences between shareware, free-ware, and public-domain software.
3. Copies of club constitution available to members for Nov. vote.

NOVEMBER - 1. IBM Writing Assistant

2. NEWSROOM
3. Vote on club constitution.

DECEMBER - 1. Raffle of IMPULSE #140 512K memory expansion unit!

2. SOCIAL

Bring books about the IBM PCjr to briefly share with the group during "Share Time" each meeting. We'd like you to "show-n-tell" us

Items on the agenda are subject to change and updates as time progresses.

MINUTES . . . FROM THE SEPT. 12 MEETING .

The library at Ida Patterson School was opened at 6:30 pm for machine set-up. The meeting began at 7:00 pm with the introduction of the volunteer club officers: Ginny Dobson (Co-Chairperson, 935-3863), Charlie Halbrook (Co-Chairperson and Disk Librarian, 689-9593), Dena Audette (Secretary and Machine Captain, 993-3282), Sarah Eoyang (Treasurer, 344-7735), Mary Burich (Publicity, 484-5069), Dick Page (Documents Librarian and Newsletter, 342-3193), Jodi Collier (Documents Librarian, 689-8373), Lew Jones (Disk Librarian, 686-1088), Mark Moss (Modem Captain, 345-2207), Bill Roy (Newsletter, 686-8416), Rhonda Schafer (Refreshments, 343-9573), and Juanita Hampton (Refreshments, 726-0139).

Dena asked for volunteers to bring machines to the meetings. Sarah gave the treasury status. Bill asked for input for the newsletter (3-3/8" width printed material) and informed us that the advertising rate for 1" copy, 1 column wide is \$2.00. Bill is looking for news of extra special sales, software reviews, hints for games, and short programs. Mary introduced the constitution and asked for members' suggestions. She noted that the Byte Shop, Computerland, and Computer & Software Brokers are most interested in helping our club. Ginny asked for names of those wanting the membership roster and the list of hardware/software each member owns.

Next, we moved on to software demonstrations. Charlie Halbrook demonstrated COLOR PAINT on his large screen projection television. This was an excellent presentation! Then Ben Page presented KING'S QUEST along with hints on how to proceed. Good job, Ben!

After the demonstrations, the floor was opened to discussion. Dick Page suggested using the disk library to raise funds and Jim Cox mentioned that the Lane Community College computer course that does not have a subheading will include MANAGING YOUR MONEY, DESK ORGANIZER, DATA BASE MANAGER II, and lots more. It is available for both audit and credit. Charlie Halbrook explained how to make a double-sided DOS disk. Larry Maurer mentioned a Microsoft Expansion offer in Junior Connection (800-IBM-jrPC) that seemed like an excellent bargain. With Flight Simulator and mouse it was listed at \$139 and

with 128K the price was \$163.

The door prize, a CH Products joystick donated by the Byte Shop, was won by Larry Maurer and a raffle was held for a box of fresh produce to help fund the disk library. The veggies were won by one of the refreshment organizers. Both ladies worked hard on all the goodies they brought! Thanks!

The meeting was adjourned at 8:30 pm.

DISK LIBRARY NEWS

Our disk library offers a whole world of useful and entertaining software that you won't see for sale in a store. This software isn't advertised and in most cases, you can't even find out about it except at a computer club meeting. We have programs of every description - database managers, word processors, educational programs and games. Many of our disks rival or surpass commercial programs costing hundreds of dollars. You may obtain copies of these SHAREWARE programs from our disk library for \$5.00/disk. This nominal fee is assessed to defray the costs of disk duplication and distribution. SHAREWARE is fully functional commercial software and, in most cases, comes with complete or partial documentation on the program disk. ONLY IF YOU FIND THIS SOFTWARE OF VALUE are you asked to pay the author a reasonable fee to register your personal copy. REGISTRATION typically entitles you to get help with problems and answers to your questions about the software, plus a printed manual and access to program updates.

SHAREWARE is an effective means of bringing down the cost of quality software, making the efforts of software authors available to you at a low cost. If you find a program useful, PLEASE support the author by registering it - it will mean better software at lower prices.

Available from the Disk Library:

PC Write	Vol. 3.0
PC File III	
PC Call	
PC Font	#225 Vol. 1
PCjr Arcade Games	
PCjr Educational Games	

If you can't wait for a meeting, or live out of range, these are available for \$5.00/disk, or five for \$20.00 plus a mailing charge of \$1.50. Write: DISK LIBRARY, Eugene PCjr Club, P.O.Box 3695, Eugene, OR 97403.

DOUBLE SIDED DOS DISKS

(Continued) That doesn't really leave you with much room to put more programs on it. If you use [DISKCOPY] to make another one, you'll get another single sided disk, because [DISKCOPY] makes an exact copy of the source disk. You could use [FORMAT], then [COPY *.*] to copy all the files and get a double sided disk, but [COPY *.*] doesn't copy hidden files, and two of the most important files are hidden files that don't appear in the directory. The result is a DOS disk with an identical file directory, but when you try to use it, it won't work. To get around it I made a system disk with [FORMAT/S] which copies COMMAND.COM and the two hidden files, IBM.BIO.COM and IBM.DOS.COM, while it formats. I then laboriously copied each file one by one onto the new disk. With only one disk drive this takes about a half an hour, and afterward I had a bad case of disk drive elbow. Then I figured out an easier way, and here it is. Make a system disk with [FORMAT/S], then [DELETE COMMAND.COM]. You now have a disk with the hidden files still intact, but no directory entries. Then go back and use [COPY *.*]. Since the first file that is copied is COMMAND.COM, it copies the file right back into the same spot, then keeps going to copy all the rest of the files in the same order that they are on the source disk. The result is an exact copy of the source disk in a double sided

Concluded in right column.

Junior..

BY BILL ROY



"POLAROID said that they'd ALREADY cleaned his disks... three times!"

WOW! win 512k,

WITH PRINTER PORT,
CLOCK AND CALENDAR.

Through the generosity of IMPULSE COMPUTER PRODUCTS, the Eugene PCjr Club is able to offer an outstanding raffle prize!!!!!! IMPULSE has made available to us an IMPULSE #140 add-on, fully populated with chips to provide 512K of additional memory, an I/O port configured as a parallel printer adapter, and a real-time clock/calendar. The unit retails for \$325.00.

Raffle tickets will be available at our meetings or by mail (Eugene PCjr Club, P. O. Box 3695, Eugene, OR 97403). Tickets are \$1.00 each or 6 for \$5.00. Mail purchases must be for \$5.00 or more. All proceeds will benefit our Club. The drawing will be held at the DECEMBER meeting. Get your tickets!

IMPULSE manufactures a range of JR specific products. The 100 Series add-ons may be purchased with 64K, 128K, 256K, and 512K or no extra memory. Additional memory IC's (integrated circuits) may be added to the less intelligent versions to bring them up to the full 512K. These add-ons also have a "stand-alone" Drive II controller card and adapter drive, plus a 3" micro-disc drive for the PCjr. They have a math coprocessor for \$105.00 and an IMPULSE JR lite pen system which provides mouse type features for \$235.00. A variety of other expansion cards for the JR are also available from IMPULSE. Call them at 801-562-5008 or write them at 6337 South Highland Drive, Salt Lake City, UT 85121 to discuss your needs, AND THANK THEM FOR THIS OUTSTANDING RAFFLE PRIZE!!!!!!

For mail orders, send checks marked "RAFFLE" in amounts of \$5.00 (6 tickets), or more, to: Eugene PCjr Club RAFFLE, P.O.Box 3695, Eugene OR, 97403. Otherwise get them at the next meeting!

IMPULSE

COMPUTER PRODUCTS

DOS (Continued) format, giving you another 180K of storage space. You have to make the same amount of disk switches, but you don't have to type in each filename one by one. If you have one disk drive it'll only take about 5 minutes, and if you're lucky enough to have two, it'll only take about 1 1/2 minutes. That's a pretty big difference!

Charlie Halbrook

BAT(ch) FILES

James Cox

A Batch command (.BAT) can cause a group of commands to be executed with a few key-strokes. The BATCH command is often the name of the file that contains the group to be executed.

Example: Suppose that you need to copy four files to each of ten disks that have been formatted. Let's say the files are ABC.DOC, DEF.DOC, GHI.DOC, JKL.DOC. To do the job, you probably have to repeat the following ten times:

```
A>COPY A:ABC.DOC <ENTER>
```

```
A>COPY A:DEF.DOC <ENTER>
```

```
A>COPY A:GHI.DOC <ENTER>
```

A>COPY A:JKL.DOC <ENTER> Clearly you need to do 40(!) lines. However, by creating a BAT file, this effort can be reduced. One way is:

```
A>COPY CON:A:CY.BAT <ENTER>
```

```
PAUSE INSERT NEXT DISK INTO DRIVE
```

```
A <ENTER>
```

```
COPY A:ABC.DOC B:ABC.DOC <ENTER>
```

```
COPY A:DEF.DOC B:DEF.DOC <ENTER>
```

```
COPY A:GHI.DOC B:GHI.DOC <ENTER>
```

```
COPY A:JKL.DOC B:JKL.DOC <ENTER>
```

```
<F6> <ENTER>
```

Explanation: A> is the DOS prompt that says DOS is ready for you. COPY CON: says you want DOS to accept input from the console which is really just the KEYBOARD. The next copy commands tell what you want copied. Note that I assume you are copying from the A drive to a B drive. It is also assumed that you have other files with the extension DOC that you DO NOT want copied. If you have no other DOC files then the BAT file could be simply:

```
A:COPY CON:A:CY.BAT <ENTER>
```

```
COPY A:*,DOC B:*,DOC <ENTER>
```

```
<F6> <ENTER>
```

The <F6> function key tells DOS where the end of the BAT file is and the <ENTER> simply ends each line. The * is called a "wild card". In this case, it says do each file that ends in the extension .DOC. The PAUSE command will give the message you create, pause, and tell the operator to strike any key to continue. It is a good idea to use the <ENTER> key as some programs require that one to continue.

**ON THE KEYBOARD****MYSTERY TUNE OF THE MONTH**

```
10 PLAY "mn t100"
```

```
20 PLAY "o1a8a8o2d8e8f#"
```

```
30 PLAY "d16c#16o1b8.o2g16g8g"
```

```
40 RUN
```

Answer: "Home on the Range"

HELPFUL HINT (1):

Some members have reported that they are unable to run certain public domain programs contained on disks purchased from our Disk Library. Generally, public domain educational games and arcade games are "case specific", that is, they have been programmed to accept user input ONLY in CAPITAL LETTERS. As a rule, then, as soon as you have loaded a public domain program, make certain that you have pressed the <CAPS LOCK> key so that your input to the computer will be in CAPITAL LETTERS!

HELPFUL HINT (2):

Anyone using IBM Writing Assistant with a 256K JR? Learn how to expand the maximum length of a document to approximately 10 written pages with a "Patch" on your program disk. Call Mary Burich, 484-5069.

Mary Burich

PACIFIC NORTHWEST COMPUTER GRAPHICS CONFERENCE

The annual Pacific NW Computer Graphic Conference is being held at the Eugene Conference Center and the Hult Center on October 28 and 29. This year there are three exhibits: a gallery of computer-generated art in the Hult Center lobby, a hands-on display of equipment in the Eugene Conference Center lobby, and a trade show with nearly 200 manufacturers' wares inside the Conference Center. For the first two exhibits the hours are 8 to 6 Monday, 8 to 5 Tuesday; admission is free. For the trade show the hours are noon to 6 Monday, noon to 5 on Tuesday; admission is \$5.00. Be there and let them know PCjrs are great for graphics!

**TO GET MORE OUT OF YOUR CLUB
;*) PUT MORE INTO IT! ;@)**

MODEM PRIMER

A modem (pronounced moe-dumb) is a machine that converts computer output into a form that can be sent over telephone lines. Modems transmit at various speeds, the most common being 300 and 1200 baud (bits per second, pronounced bod). You can figure one character per second for every 10 bauds. The more bauds, the more expensive the modem due to the difficulty of achieving accuracy at the higher rates. If you want to use a modem to hook up to one of the computer services such as CompuServe or The Source, save money on telephone bills by buying a higher speed modem. Those services also charge from \$2 to \$20 per hour for computer time, so you can see that it can add up fast. The "direct connect" type modem connects directly into telephone lines and may be internal (inside the computer) or external (a separate box). IBM sells an internal, 300 baud modem for the Jr, which retails for \$199. You can find equivalent externals as low as \$80, but you will probably need a cable or something depending - well, you know how it goes. And, of course, you need software. Fortunately, the Sampler that comes with the Jr, has a little program to dial the number and print what is on the screen. If you want to download (pull something into your computer) you will need Crosstalk or some other program that does more sophisticated modem tasks.

With an "acoustic coupler" modem you place the telephone handset on top of the modem and dial the number. Acoustic couplers are not as common as they once were because they are more likely to pick up extraneous noise. However, if you just want something to access local bulletin boards you might find it a very inexpensive way to go. Locally there are several "bulletin boards" that serve as a post office or computer telephone service between computer users. All you need is a modem, a telephone number and the access code. The University of Oregon bulletin board is free and easy to access. There will be a demonstration of that at the next meeting. The local MUG (modem users group) meets the second and third Thursday of each month and offers the best method of gaining access to the various local boards. The sysops (systems operators or the guys that run the bulletin boards) usually attend and give codes to people with similar areas of interest. In some cases, there is a membership fee.

by Jodi Collier

A B.A.S.I.C. PROGRAMMING TIP

The COLOR statement in the text mode (SCREEN 0) will display sixteen colors (0 through 15) in the foreground (the color of the text letters). You can make the text characters blink on and off by listing the foreground number found when you add the color you want plus 16.

For example: If you want the text to blink in the color red, you would choose the number 4, then add 16 to 4 to get 20 (great mathematician, huh?). When writing the COLOR statement, it would be "COLOR 20" in the appropriate program line if you want the text to blink in red. Blinking light blue would be "COLOR 25", the COLOR light blue (9) plus 16. Using this in key phrases can give you a really "flashy" program!

by Dick Page

PC-TYPE

ANOTHER SHAREWARE WORD PROCESSOR

ButtonWare of Bellevue, WA (makers of PC-FILE III, PC-CALC, PC-GRAPH and PC-DIAL) announced recently a new general purpose shareware word processing program called PC-TYPE. They claim it is logical, easy to learn, fast, compact, customizable, and yet powerful (what more could you want from such a program?).

The introductory price is \$46. PLEASE NOTE: All ButtonWare product prices will increase 1 November 1985. PC-TYPE will then cost \$59.95 plus \$5 shipping & handling.

(ButtonWare has just released a new version of PC-CALC [as of 1 October 1985]. However, we don't know what the specific improvements are. Stay tuned, jrs.)

TURN YOUR PRINTER INTO A TYPEWRITER?

Do you want instant typing - without a word processor? Software Publishing Company has a half-price special on "The Typewriter" program (\$19.95 plus shipping) which allows you to quickly write short memos, address envelopes, and fill out forms more conveniently than a word processor program.

Using The Typewriter is easy - all you do is boot up and start typing. The program gives you a choice of two output modes: (1.) "Character Mode", which prints each character as you type; and "Line Mode", which prints one line at a time. You can adjust the line length (up to 80 characters wide), set multiple tabs, and insert and delete (in the Line Mode only). It has a word wrap feature and a status line showing margins, tabs, line length, typing mode, and cursor position.

The special offer is good through 11/30/85 by calling 1-800-851-2917 and asking for The Typewriter for IBM PC computers (item order no.1016).

by Dick Page

Advertising/CLASSIFIEDS

THE PCjr NEWSLETTER will now accept advertising as follows:

COMMERCIAL AD RATES: per insertion - 2 pages \$70, one page \$40, 1/2 page \$25, and 1/4 page \$15. Cash in advance only, please.

CLASSIFIEDS: "For Sale" ads are \$2.00 for @ 25 words, where commercial transactions are involved, free to members where only information is exchanged. Ads should be placed by month's end for the next issue.

SOFTWARE EXPRESS has announced that they are further lowering their software prices so that all items are 20 to 45% off list price. Use your Software Express membership card for an additional discount.

NOTE: The Byte Shop chain of stores has been purchased and is now called "PacTelCorp".

SmartTEAM 300/1200 MODEM
IC-PC, 541 Willamette, Suite #307, Eugene, OR 97401, has a "HAYES" Smartmodem clone modem, the SmartTEAM 103/212A available for 1/2 the price. It's a 300/1200 baud unit at \$219.00,

jr. CONNECTION (1-800-IBM-jrPC)

jr. CONNECTION (1-800-IBM-jrPC) is again selling "FINANCIER jr" from Financial Software for \$19.00 plus a \$2.00 shipping charge. They are also continuing to offer a Jr. Connection 2nd Disk Drive (stand alone) package for \$197.00 that includes a drive card and a CDC half-height external disk drive with case and power supply. They also have some of the (last?) MICROSOFTjr BOOSTER (with mouse and 128K of memory and FLIGHT SIMULATOR for \$163.00). Remember to tell them you saw it in our NEWSLETTER!

THE DIRECTORY

IBM has issued the third issue of THE DIRECTORY of Personally Developed Software for IBM-PC's and most of the programs will run on the PCjr (sometimes 256K is specified). These programs are inexpensive, ranging from \$14.95 to about \$100.00. The 96pg. catalogue is FREE for the asking, or by filling out the questionnaire in the last issue. Some special "package deals" are available at a savings.

Call 1-800-IBM-PCSW (toll free).

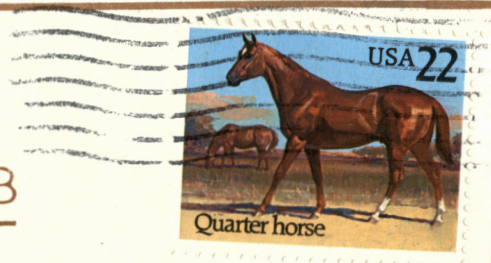


EUGENE

PCjr

CLUB

P. O. BOX 3695,
EUGENE, OR 97403



Dr. Richard M. Page
5025 Willamette
Eugene, OR 97405

6*BS

FIRST CLASS

PCjr LIVES!
Courtesy, RACORE Corp.