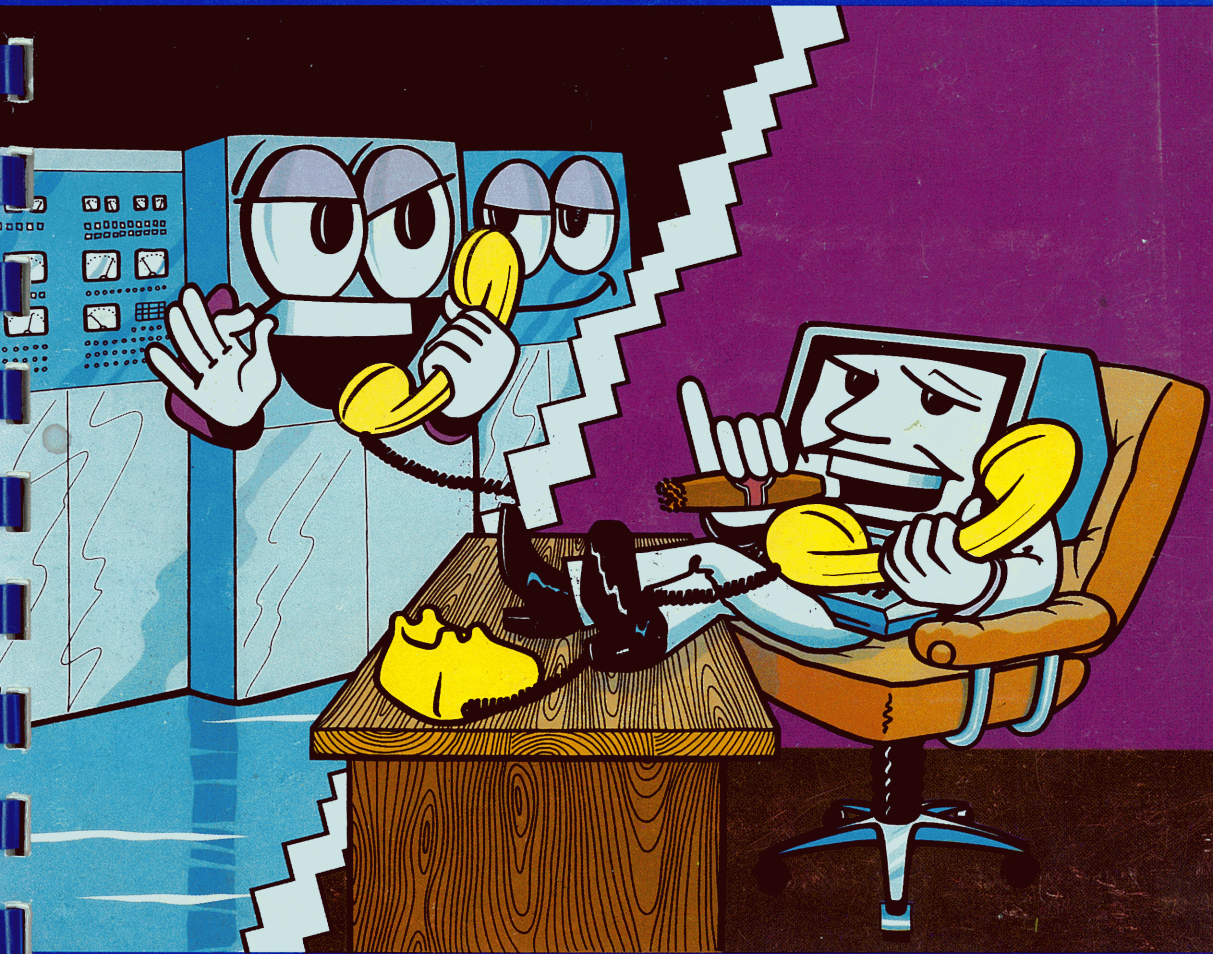


For the ATARI 400/800

Teletari™

The Friendly Terminal



DO NOT ASK
COMPUTER SOFTWARE

Requires: 32K RAM - BASIC - 850 Interface.

Note:

When on-line with TeleTari you will notice that hitting the delete key does not move the cursor or change the screen display. The delete *is* being sent out; its effect will only be displayed if echoed back by the down-line computer.

Teletari

THE FRIENDLY TERMINAL

by
Harry Koons

OWNER'S GUIDE

© 1983 HARRY KOONS

Atari is a trademark of Atari Inc.
Full-View 80 is a trademark of BIT 3 Corp.



2265 WESTWOOD BLVD., B-150
LOS ANGELES, CALIFORNIA 90064
(213) 397-8811

DISCLAIMER AND LIMITED WARRANTY

This software product and the attached instructional materials are sold "AS IS" without warranty as to their performance. The entire risk as to the quality and performance of the computer software program is assumed by the user. The user, and not the manufacturer, distributor or retailer assumes the entire cost of all necessary service or repair to the computer software program. DON'T ASK COMPUTER SOFTWARE, Inc. shall have no liability or responsibility to the purchaser or any other person or entity with respect to any liability, loss or damage caused or alleged to be caused directly or indirectly by this product, including but not limited to any interruption in service, loss of service, loss of business and anticipatory profits or consequential damages resulting from the use or operation of the software, hardware, or documentation portions of this product.

However, to the original purchaser only, DON'T ASK COMPUTER SOFTWARE, Inc. warrants that the medium on which the program is recorded will be free from defects in materials and faulty workmanship under normal use and service for a period of ninety (90) days from the date of purchase. If a defect in the medium should occur during this period, the medium should be returned for repair or replacement to DON'T ASK or to its authorized dealer. After this ninety day period, media inoperable for any reason may be returned to DON'T ASK only along with \$5.00 for prompt replacement.

The above warranties for goods are in lieu of all other express warranties and no implied warranties of merchantability and fitness for a particular purpose or any other warranty obligation on the part of DON'T ASK shall last longer than ninety (90) days. Some states do not allow limitations on how long an implied warranty lasts, so the above limitation may not apply to you. This warranty gives you specific legal rights, and you may also have other rights which vary from state to state.

NOTICE

This software and accompanying instructional materials are copyrighted. You are prohibited from reproducing, translating, or distributing the software or instructional materials in any unauthorized manner. Unauthorized copying of these products is a violation of federal law. (Title 17, U.S.-Code, Section 506.) Violation may carry a fine of up to \$50,000, or imprisonment, or both.

Don't Ask Computer Software, Inc. reserves the right to make improvements in the product described in this manual at any time and without notice. DON'T ASK can have no responsibility for any errors, whether factual or typographical, in this documentation.

TABLE OF CONTENTS

1. Introduction	4
2. Getting Started	6
3. The TeleTari Menu.....	7
4. Online.....	9
5. Save.....	10
6. Load	11
7. Review	12
8. Print.....	13
9. Upload	13
10. Directory	14
11. 80-Column Screen.....	14
12. Terminal Parameters.....	14
13. The Terminal Parameters Menu	15
Screen Margins.....	15
Terminal Number.....	16
RS232 Port	16
Baud Rate	16
Word Size	16
Stop Bits	17
Control Lines	17
Translation.....	17
Parity.....	17
Line Feed.....	17
DTR, RTS, and XMT.....	17
Handshake.....	18
Control Characters.....	18
ASCII Delete.....	18
14. Transferring Programs	19
15. List of Public Access Message Systems	21

1. INTRODUCTION

A. Overview

Congratulations! You are now the owner of *TeleTari*, the Friendly Terminal program – the most convenient, adaptable, and reasonably priced telecommunications program available for the Atari Home Computer. *TeleTari* communicates with a remote computer by means of the Atari 850 Interface Module and a modem, and stores your data in a large memory buffer in your Atari computer. With *TeleTari's* help, you can access an enormous selection of computer telecommunications services, send text or program files from your disk to another computer, and review, save, or print data that you receive from a remote computer. You can also use *TeleTari* to access other functions of your 850 Interface.

The buffer that *TeleTari* creates will hold 20K bytes (20,000 characters) if you have at least 40K bytes of RAM in your computer, or 12K bytes if you have 32K of RAM in your computer. Data in the buffer can be scrolled on the screen for easy review, saved on disk, and printed on paper. Furthermore, you can perform all these activities *after* you hang up the phone, which saves you time and telephone charges.

Consider some of the exciting options *TeleTari* makes available to you. You can access the Source, CompuServe, Dow Jones Services, MicroNet, Telenet, Dialog, and national or local bulletin boards. You can read news stories, movie and book reviews, airline schedules, weather reports, magazine indexes, and more. Save stock and commodities figures. Send and receive electronic mail. Send other computerists your program files (in BASIC, source code, machine language, or whatever you like). Use time-sharing systems on large computers to work with FORTRAN, COBOL, APL, and other languages not available on the Atari Home Computer. Your Atari now has the power to do all these things.

To get you started in telecommunications, we have included, as the last chapter in this manual, a list of the names and telephone numbers of all the Public Access Message Systems. This is a list of a wide variety of computer message and file transfer systems which you can access free of charge with the help of *TeleTari*.

All options available in the *TeleTari* program are displayed on two menus. The TeleTari Menu lists the functions you can perform, such as reviewing the data in the buffer, saving it on a disk, or transmitting the contents of the buffer to a remote computer. The Terminal Parameters Menu lists all the terminal parameters that you can change, such as baud (transmission) rate and translation mode, and allows you to save and load your own customized sets of terminal parameters. For most communications you will use one of the parameter sets provided with the program; you simply load the program from the disk, run it, and enter one letter to open the terminal for communications. If you regularly need a special set of terminal parameters you can save up to ten parameter sets on a disk and recall them as you need them. (It is impossible, however, to write a completely general program that is capable of communicating with all other computers.)

B. Minimum RAM and Accessories

To use *TeleTari* you will need the following equipment:

REQUIRED ACCESSORIES

32K RAM

Atari-compatible disk drive

Atari BASIC Cartridge

Atari 850 Interface Module

RS232-compatible modem, such as Atari 830 Modem

OPTIONAL ACCESSORIES

Printer

2. GETTING STARTED

Here are the basic instructions for using *TeleTari* to communicate with another computer. But before you make your first call to a remote computer, please read the rest of this manual.

Set up your equipment, following the instructions with your modem for connecting it to the computer and the telephone line, and load *TeleTari* as follows:

1. Install your BASIC cartridge into the left slot in the computer console.
2. Turn on the disk drive and wait for the busy light to go off.
3. Turn on the TV or monitor.
4. Insert the *TeleTari* disk into the disk drive and close the drive door.
5. Make sure that the computer power is OFF.
6. Turn on the Atari 850 Interface Module.
7. If you are using an Atari 830 Modem, set the ANS/OFF/ORIG switch to ORIG and set the FULL/TEST/HALF switch to FULL or HALF as required by the computer at the other end of the communication link. (If you are not sure of the setting, start with FULL. If no characters appear on the screen as you type, change the switch to HALF. If all the characters are printing double on the screen when you are communicating, change the switch to FULL.) If you are using another modem, follow the instructions to set the modem in the originate mode with either full or half duplex as required.
8. Switch the POWER switch on the computer to ON. The Disk Operating System and a special program to handle the RS232 port on the 850 Interface will now load. After a short time you will hear a long beep; this is a signal that the RS232 handler program has successfully loaded into the computer memory. NOTE: If you did not switch on the 850 Interface before you turned on the computer, the RS232 handler will not load. Without the RS232 handler in your computer's memory, *TeleTari* will not run. So be sure your 850 Interface is turned on first, before you turn on the power on your computer.
9. The *TeleTari* program loads from the disk into the computer's memory in about ten seconds. Once it has loaded, the name and copyright message appear on the screen while the standard set of terminal parameters is loaded.
10. Next the TeleTari Menu appears on the screen (See Section 3 below).
11. You are now ready to use *TeleTari*.
12. Type 0 to go online – i.e., to open the RS232 port for communications.
13. Dial the telephone number of the remote computer.
14. Follow the instructions in your modem manual for going online. If you have an acoustic modem, when you hear the high-pitched tone from the remote computer, place the telephone receiver into the cradle of the modem.
15. When the READY or CONNECTED indicator on the modem lights, you are ready to begin communicating.
16. You must enter the appropriate "logon" code for the remote computer. You get this code from the organization providing the data or computer service.
17. When you are finished, you must enter the appropriate "logoff" code required by the remote computer.

3. THE TELETARI MENU

A. The Main Menu

The main menu is the first menu to appear on the screen. It looks like this:

TeleTari Menu

O - ONLINE
S - SAVE
L - LOAD
R - REVIEW
P - PRINT
U - UPLOAD
D - DIRECTORY
T - TERMINAL PARAMETERS
ENTER CHOICE?

Choose an option by typing its letter. If you must supply further information, prompts will appear on the screen. All the options are described in detail later in this manual. A brief description is given here to help you understand the operation of the program.

ONLINE opens the port for communications. All of the characters that you see on the screen after the word ONLINE are being stored in the memory buffer in the computer. To return to the TeleTari Menu from ONLINE, press the [SELECT] key on the right side of the keyboard.

LOAD transfers the contents of a disk file into the buffer.

SAVE transfers the characters in the buffer to a permanent file on a disk.

REVIEW displays the contents of the buffer on the screen. You can rapidly page forward or backward through the buffer and print selected portions of it on a printer.

PRINT prints the entire contents of the buffer on a printer.

UPLOAD sends the contents of the buffer to another computer.

DIRECTORY prints the disk directory on the screen. Use this to find the name of a file or to make sure there is sufficient room on the disk before saving what is in your buffer.

TERMINAL PARAMETERS displays a new menu. From this menu you set any terminal parameter allowed by the Atari 850 Interface by typing the letter identifying the parameter. The parameter on the screen will cycle through all of its possible values. You also use this function to save and load customized sets of the terminal parameters you use most often and to set the left and right screen margins. To return to the TeleTari Menu press the [SELECT] key.

B. System Reset

Pressing the [SYSTEM RESET] key will terminate any of the above options and return you to the TeleTari Menu. It is not a good idea to press [SYSTEM RESET] while you are online because you may lose the end of your buffer. Pressing [SYSTEM RESET] while you are in any other mode will leave the buffer untouched. If you have a BIT 3 Fullview 80™ board and have been using the 80-column display, pressing [SYSTEM RESET] will return you to the 40-column display.

C. Responding to Prompts

The *TeleTari* program will prompt you for such entries as desired menu options or filenames. Information is requested by a “?” at the end of a line. When this happens, type the answer, then press the [RETURN] key. (In these instructions the symbol [RETURN] is used to remind you that this is one key.) The computer will not act on any answer until the [RETURN] key is pressed. The only exceptions to this rule occur when you make a selection from the TeleTari Menu and when you change the terminal parameters while in the Terminal Parameters Menu.

When you want to store a file on a disk, you must give it a name. The rules for file names are given in the Atari Disk Operating System II Reference Manual. You should remember the following three in particular:

- The maximum length of a filename is eight characters.
- The only characters that can be used in a filename are the *capital* letters A through Z and the numerals 0 through 9.
- The first character in a filename is always a letter, not a numeral.

You can add a three-character extender to a filename to indicate the type of information in the file. A period is required to separate the filename from the extender if an extender is used. For example, if you call a data file MYFILE, you might name it MYFILE.DAT. When the *TeleTari* program prompts you to enter a filename, you would enter MYFILE.DAT for this file. (Note that when the disk directory is displayed, the filename and extender are spaced apart without the period; this is not the way to enter a filename, however.)

If you type [RETURN] without entering a filename, you will return to the TeleTari Menu.

D. Error Messages

You will occasionally get an error message in English from the *TeleTari* program. These messages indicate common errors, such as failure to turn on the printer before printing. You should check the device and follow the instructions given in the error message. Most errors can be corrected without losing the data in the *TeleTari* buffer.

Although it is unlikely, you may occasionally get an error message of the form:

ERROR nnn

where nnn is a number. These are input/output error messages which indicate that the system is unable to perform an instruction. You will get one if, for example, a piece of necessary equipment is disconnected. The meaning of each error message is explained in Appendix B of the Atari Basic Reference Manual. To return to the TeleTari Menu after an error, press [SELECT]. The data in the buffer should be unaffected and you should still be connected with the remote computer.

4. ONLINE

The ONLINE option opens the RS232 port in preparation for communicating with a remote computer. It is used for all interactive communications as well as for receiving text or programs. When *TeleTari* is first loaded, the parameters for TERMINAL NUMBER 1 on the *TeleTari* program disk are automatically selected. These parameters can be used for most interactive telecommunications. You can switch over from the built-in parameters to others of your choice using option T – TERMINAL PARAMETERS described below. When you open the port with the ONLINE option, the built-in parameters or the new ones you have selected will be set.

When you enter 0 as your choice under the TeleTari Menu, the port is opened and the screen is cleared. Then the program displays on the screen the amount of the buffer that is filled and the amount of empty memory remaining in the buffer. Finally the word ONLINE appears. The port is now ready to use. Make sure you are online before you dial a remote computer; this will save you a telephone charge if there is any problem.

The most common problem in getting online is failure to turn on the Atari 850 Interface Module before turning on the computer. If the RS232 handler program has not been booted, *TeleTari* will not run. When you attempt to run it you will see the message "850 Interface is not booted. Reboot disk and try again." If that message appears, turn off the computer and go back to step 5 in Section 2 – GETTING STARTED.

Special Operations While Online

When you are online you have made the telephone connection, all of the characters you type will be transmitted to the remote computer. The characters you type can appear on the screen as well; this is not a direct result of your typing, however. If your modem is in half-duplex operation, it sends the characters that you type back to your computer, which then prints them on the screen. If the modem is in full-duplex operation, the remote computer will usually reflect the characters you type back to your modem and computer, which will then print them on the screen. If the characters you type do not appear on the screen, this means that your modem is set to full-duplex and the remote computer is not reflecting the characters back to you. All characters that do appear on the screen are stored in the buffer.

The three yellow keys on the right side of the keyboard are used for special functions while you are online.

- Pressing the [START] and [OPTION] keys simultaneously resets the buffer. All data in the buffer are lost and the next character typed or received will start to refill the buffer.
- The [SELECT] key returns you to the TeleTari Menu. Pressing [SELECT] terminates the ONLINE mode and closes the RS232 port. The telephone is still connected to the remote computer, but the characters you type are not transmitted nor stored in the buffer. To resume communications select 0 under the TeleTari Menu.
- The [OPTION] key will display how much of the buffer has been filled and how many

characters of empty memory are still available in the buffer. This information is only displayed on the screen; it is not stored in the buffer.

The border on the screen will turn red when there is room for fewer than 1000 characters in the *TeleTari* buffer. At a transmission rate of 300 baud, the buffer will be filled about 30 seconds after the border turns red. When the border turns red you should pause the communication and save the data or reset the buffer.

When the buffer is full, a tone will sound and the message BUFFER FULL will appear on the screen. You must then return to the TeleTari Menu. When you wish to continue the communication, select 0 to go back online. The XOFF/XON handshake is always sent under these conditions. (See Section 12 – TERMINAL PARAMETERS MENU, under Handshake, for an explanation of XOFF/XON.) The buffer is *automatically reset* to empty before the word ONLINE appears on the screen.

5. SAVE

Use SAVE to transfer the characters in the *TeleTari* buffer to a disk file. When you enter S as your choice under the TeleTari Menu, you will be prompted to enter the name under which you want to save your data. Type the filename. The name must follow the rules for filenames given in Section 3 under Responding to Prompts. Do not attempt to save data on the *TeleTari* disk.

Each free sector on a disk can hold 125 characters. If you have a 40K memory and save a full buffer of approximately 20,000 characters, you will need about 170 sectors; with a 32K memory, a full buffer of 12,000 characters will require about 105 sectors. This number will vary somewhat with the exact number of characters in the buffer. If you are not sure how many characters are in your *TeleTari* buffer, it is safest to use a disk with at least 170 free sectors.

When all of the data have been saved, a tone will sound and the message OUTPUT COMPLETED will appear on the screen. Press [SELECT] to return to the TeleTari Menu. Your data remain in the buffer. If you want to empty the buffer, simultaneously press [START] and [OPTION] after you go back online.

6. LOAD

Use LOAD to transfer the contents of a disk file into the *TeleTari* buffer. The file may contain text, a BASIC program, a machine language program, or any other material stored as characters in the disk file.

After you load a file, you can review the file (R), print it (P), or upload it to another computer (U).

When you choose L under the TeleTari Menu, the following prompt will appear on the screen:

*****LOAD BUFFER*****

ENTER FILENAME?

Type the name of the file using the standard Atari format (described in Section 3).

The message LOADING BUFFER will appear on the screen during the transfer. When the transfer is complete, the number of characters loaded into the buffer will be displayed under the heading NUMBER USED. NOTE: the buffer is always reset to empty before it is loaded. If the display shows that the buffer is full – i.e., EMPTY is 0 – then the disk file was too large for the buffer. The buffer then contains the beginning of the disk file; the characters at the end are not loaded. This will only happen if your file is larger than the capacity of the *TeleTari* buffer. If you want to load an unusually long file that may exceed the size of the buffer, break it into two or three shorter files and then load and upload them one after the other.

7. REVIEW

The REVIEW option prints the contents of the *TeleTari* buffer to the screen. While you are in the REVIEW mode you can also print selected portions of the buffer on a printer. When you choose R under the TeleTari Menu, the first characters in the buffer will begin to appear on the screen. If you do nothing else, the entire buffer will slowly scroll by.

While reviewing, you can also page forward and backward through the buffer by about 500 characters at a time. Press ↓ to page forward and ↑ to page back toward the start of the buffer. (Do not press the [CTRL] key as you normally would to move the cursor.) When you do this, *TeleTari* will clear the screen, display the message BUFFER AT nnn, where nnn is the character count from the beginning of the buffer, produce a rapid burst of characters to show you the contents at that location, and then resume the normal scrolling of characters from that point in the buffer.

You can pause the review at any time by pressing [START]. Resume the review by pressing [START] again.

You can print selected portions of the buffer by pressing [OPTION] to start printing and again pressing [OPTION] to stop printing. To print from the beginning of the buffer, hold down the [OPTION] key while you type R to begin the review. Release the [OPTION] key after the cursor appears in the upper left corner of the screen.

A tone will sound when the review is finished. Return to the TeleTari Menu by pressing [SELECT]. You can also return to the TeleTari Menu before the review is finished by pressing [SELECT].

8. PRINT

The PRINT option is similar to the SAVE option. The characters in the *TeleTari* buffer are transferred to the buffer in your printer at machine language speed. Some printers have buffers that are larger than the buffer in *TeleTari*. If your printer has such a buffer, all of the characters in the *TeleTari* buffer will be transferred into the printer buffer at once, and you can go back online while the entire buffer is being printed. If your printer has a smaller buffer, it will eventually print the entire contents of your *TeleTari* buffer, but you cannot go back online until the print-out is complete, because your computer is busy sending successive parts of the *TeleTari* buffer to your printer. With a smaller printer buffer, the message PRINTING BUFFER appears on the screen during the print-out. When the print-out is complete, a tone will sound and the message OUTPUT COMPLETE will appear on the screen. Press [SELECT] to return to the TeleTari Menu. The only way to terminate the PRINT option before the print-out is complete is to press [SYSTEM RESET]

9. UPLOAD

Use UPLOAD to send the contents of the *TeleTari* buffer to another computer. The buffer may contain any sort of text or program.

When you choose U under the TeleTari Menu the contents of the buffer will be transferred to the modem at the baud (transmission) rate set for the terminal. If you do not want to use the terminal parameters included on the *TeleTari* disk, you must change them before you upload. See TERMINAL PARAMETERS below, and Section 13 – THE TERMINAL PARAMETERS MENU.

In the UPLOAD mode the RS232 port is opened for output only. In this mode you cannot receive data from the remote computer.

If you wish to stop the upload before the end of the file is reached, press [SYSTEM RESET] and you will return to the TeleTari Menu.

The parameters for TERMINAL NUMBER 1, provided on the *TeleTari* disk, should be used to upload text files, including BASIC program files saved on disk using the LIST command. The parameters for TERMINAL NUMBER 2 should be used to upload object files and tokenized BASIC files (BASIC program files stored on disk using the SAVE command). The TERMINAL NUMBER 2 parameters pass all the characters as ASCII characters, without modification, from decimal 0 to decimal 255. If you are not certain which parameter set to use for your file, try sending it with one set, see what happens, and make appropriate changes.

10. DIRECTORY

The DIRECTORY option prints a disk directory on the screen. A long directory will fill more than one screen; type [RETURN] to see the additional pages of directory entries. The list you see contains all of the files on the disk. It includes their filenames, extenders (if any), the number of sectors each one occupies, and the number of remaining free sectors.

11. 80-COLUMN SCREEN

If you have a BIT 3 Fullview 80™ (80-column) board, you can select 80 columns simply by typing 8 in response to the prompt ENTER CHOICE? in the TeleTari Menu. The menu will be erased and redisplayed in the 80-column format. To return to 40 columns, type 4 in response to the prompt ENTER CHOICE? in the TeleTari Menu.

12. TERMINAL PARAMETERS

The TERMINAL PARAMETERS option allows you to configure an RS232 port for special applications. When you type T under the TeleTari Menu, a new menu appears: the Terminal Parameters Menu. This lists the parameters you can set with the *TeleTari* program. For most communications you will use the built-in parameters that are initially set by the program. However, we encourage you to read Section 13 below and take a look at the Terminal Parameters Menu to become aware of *TeleTari's* capabilities.

13. THE TERMINAL PARAMETERS MENU

The first time you display the Terminal Parameters Menu, the values for the built-in parameters will be shown in inverse video beside the names of each of the parameters. You will also see, at the bottom of the screen, the number of buffer characters already used and the number of remaining empty spaces in the buffer.

To change a terminal parameter, type the letter identifying the parameter. The number beside the name of that parameter will cycle to the next allowed value for that parameter. As an example type P. The number beside the name RS232 Port changes from 1 to 2. You are now configured to use port 2 on the 850 Interface Module. Type P again. The number changes to 3. If you type P two more times, the port will change to 4 and then back to 1; you will have completed the cycle of available values for the P option. Try this with each of the parameters, and you will see all of the allowed values as they are displayed. Return to the TeleTari Menu by pressing [**SELECT**]. Be sure you have left the parameters with the values you need for your communication!

In configuring the port you may set the following:

- Baud rate (transmission rate)
- Number of bits per word sent or received
- Number of stop bits per word
- Whether the incoming control signals DSR, CTS, and CRX are monitored
- Whether input parity is checked
- Whether output parity is set
- Whether a line feed is added after every carriage return
- Translation of the word being sent or received
- Whether the outgoing control signals DTR, RTS, and XMT are used
- Whether the XOFF/XON handshake is used
- Whether control characters are retained in the buffer and printed on the screen
- Whether the ASCII or ATASCII delete is sent when the [**DELET BACK S**] key is pressed.

These options are described in detail in the 850 Interface Manual. Only a brief summary of the more important features is given below. Although you will not have to change these parameters for most of your telecommunication applications, please read through this section.

SCREEN MARGINS

The "<" on the screen indicates the left margin and the ">" indicates the right margin. Type < to change the left screen margin. The left margin will cycle through columns 0, 1, and 2. Type > to change the right margin. The right margin will toggle between columns 38 and 39. Each time you change a margin, the menu will be erased and redisplayed with the new margins. The margins cannot be reset on the BiT 3 80-column board.

TERMINAL NUMBER – N

The first item on the menu allows you to load and save customized sets of terminal parameters. The terminal sets are numbered from 0 through 9. Three terminal configurations are provided on the *TeleTari* program disk. Terminal Number 1 is always selected when the program is loaded. It can be used for most interactive telecommunications with services such as CompuServe and the Source. Terminal Number 2 should be used for transferring most program files between computers. Please refer to Section 9 – UPLOAD for more details about when to use Terminals 1 and 2. To load these parameters, press N; this will change the Terminal Number to 2. With the *TeleTari* program disk in the disk drive, press [START]. The new parameters will load and be displayed in the menu. Terminal Number 3 is the same as 2 except that the left margin is set at 0 instead of 2. Some data services use exactly 40 column screen displays, and these are easier to read using the Terminal Number 3 parameters.

To save a customized set of parameters, set the parameters, following the instructions below for each parameter. Set the Terminal Number to whatever number you want to use to identify this set. Put a formatted disk into your disk drive and press [OPTION]. The parameters will be saved under that number on your disk. You cannot save any customized sets on the *TeleTari* program disk.

To reload a customized set of parameters, follow the instructions above for loading Terminal Number 2. Be sure that the disk with your customized set is in the disk drive, and select the Terminal Number you gave to this set before pressing [START].

RS232 PORT – P

The Atari 850 Interface Module has four RS232 ports. They are numbered above the connectors. Normally you will use port 1 for modem communications. *TeleTari* makes the other ports available to you, however, if you wish to use them. (Consult your 850 Interface Operations Manual for the characteristics of the different ports if you are uncertain which port you want to use.)

BAUD RATE – B

This option allows you to set the transmission rate for the communication. Today most communications with microcomputers are transmitted at 300 characters per second, or 300 baud. The *TeleTari* program allows the terminal to be configured to rates as high as 9600 baud. *TeleTari* works perfectly up through 4800 baud for all applications. At 9600 baud it will upload perfectly for all applications, and will receive any transmission of up to 30 bytes in length. Transmissions longer than about 30 bytes may exceed the capacity of the buffer in the 850 Interface. If you want to receive data at 9600 baud, you should experiment first to make sure the program can be used successfully for your application.

WORD SIZE – W

The port can be configured for word sizes from 5 to 8 bits. If you specify 8-bit words, there are no restrictions on the operation of the port. However, if you choose a smaller word size, there are restrictions; see page 48 of the 850 Interface Operations Manual for details.

STOP BITS – S

Stop bits are used by a terminal to find each character in a transmission. You may have to change this parameter to match the requirements of terminals operating at rates slower than 300 baud.

CONTROL LINES – C

The Atari 850 Interface can monitor three incoming control lines: Data Set Ready (DSR), Clear To Send (CTS), and Carrier Detect (CRX). Most microcomputer telecommunications do not use these lines, but *TeleTari* is equipped to access them if you wish. If a line that is checked is not ready, the Interface Module will return an error message (an error number will appear on the screen). Press [**SELECT**] to return to the TeleTari Menu.

TRANSLATION – T

There are three translation options: NONE, LIGHT translation, and HEAVY translation. These options are described in detail in the Atari 850 Interface Manual. For most telecommunications you will use LIGHT translation. When you transmit or receive a machine language or tokenized BASIC program, set translation to NONE. When translation is set to NONE, the [**RETURN**] key may not provide the carriage return required by the remote computer; you must then get a carriage return by using the ASCII character decimal 13, obtained by simultaneously pressing [**CTRL**] and M.

PARITY – I (Input) and O (Output)

Parity is a method of finding errors in a communication. It is beyond the scope of this manual to explain how it works. In special applications, you may have to set either the input or output parity for your terminal to conform with the requirements of the remote computer. If you are not receiving the correct characters, contact the computer service to see if the parity must be set.

LINE FEED – L

Some terminals, particularly teletype terminals without a video screen, require a line feed to advance the paper in the printer. The End of Line (EOL) and Carriage Return (CR) characters sent by the Atari computer may not be sufficient to advance the paper. When the Line Feed option is set to YES a line feed will be appended to the CR or EOL in the translation process. If the Translation option is set to NONE, however, the line feed cannot be appended even if Line Feed is set to YES.

DTR, RTS, and XMT – D, R, and X respectively

There are up to three outgoing control lines on each of the RS232 ports of the Interface Module: Data Terminal Ready (DTR), Request To Send (RTS), and Data Transmit (XMT). *TeleTari* can turn each of these lines on or off. It is unlikely that you will need any of these commands. If you need them for a special application, please read the description of their functions in the 850 Interface Manual.

HANDSHAKE - H

Sometimes the receiver of data can send a request to the sender to pause the transmission. This is called the XOFF command. The XON command is used to resume the transmission. You might use this to pause the transmission when, for example, you want to save the data in the *TeleTari* buffer. This is only useful, of course, if the remote computer recognizes XOFF/XON. If you set the Handshake option to ON, then the XON command will be transmitted when you go online, and the XOFF command will be transmitted when the buffer fills or you go offline. If these commands are meaningful to the sending computer, they will cause a pause in data transmission. XOFF is ASCII character decimal 19 and XON is ASCII character decimal 17. (Note: XOFF is automatically sent when the buffer is full, even when Handshake is set to OFF and no initial XON has been sent.)

CONTROL CHARACTERS - K

When the Atari computer receives a control character as input (ASCII characters decimal 0 to 31), it prints a graphics character on the screen. Often computer services send control characters for line feeds and spaces at the beginning of a line. If you do not want your computer to display these as graphics characters on the screen, set Control Char to DELETE. Then all incoming control characters will be ignored.

When you send or receive a machine language or tokenized BASIC program, set Control Char to RETAIN.

ASCII DELETE

The Atari computer uses character decimal 126 for the delete/backspace and decimal 127 for the tab. However, ASCII uses decimal 127 for the delete and decimal 126 for the tilde. This may cause a problem when you are working with a remote computer than expects the ASCII delete. Such a computer may understand a [CTRL] H as a backspace, so you can sometimes use this as a substitute for the delete/backspace.

When the ASCII Delete option is set to ON, *TeleTari* interchanges the functions of characters 126 and 127 to conform to ASCII standard for delete. When you press [DELETE BACK S] the ASCII delete will be sent, and when you press [TAB] the ASCII tilde will be sent. When sending or receiving program files or when communicating with another Atari computer, set ASCII Delete to OFF.

14. TRANSFERRING PROGRAMS

You can use *TeleTari* to send a textfile or program to a remote computer, or to receive a textfile or program from a remote computer.

To receive a program, select O – ONLINE under the TeleTari Menu.

Reset the buffer by simultaneously pressing [START] and [OPTION] just before the first character of the program is transmitted to you. The program will be stored in the buffer as it is received. When all of the characters have been received, save the program on a disk. You may have to use a text editor such as Text Wizard (from DataSoft, Inc.) or the Atari Program-Text Editor (Atari Program Exchange #APX-20075) to edit the file after you have saved it. If you were not careful to reset the buffer just before the first character was received, you may have extraneous characters in the buffer. Such characters may also appear at the end of the buffer. It is best to check the beginning and end of the file to be sure it does not contain extraneous characters.

To send a disk file containing text or a program, establish a communication link with the remote computer using the ONLINE mode. When you are ready to send the file, return to the TeleTari Menu by pressing [SELECT], then enter L to load your disk file into the buffer. You will be prompted for filename. A tone will sound when the load is complete. Then press [SELECT] to return to the TeleTari Menu and enter U to send the buffer to the remote computer.

When you send or receive a machine language program or a tokenized BASIC program, you must set the terminal parameters so that all characters are transmitted and received exactly as they are stored on the disk. Using the options under the Terminal Parameters Menu, set Word Size to 8, set Translation to NONE, set the input and output Parity to NONE, set Control Char to RETAIN, and set ASCII Delte to OFF. Terminal Number 2 on the *TeleTari* disk is preset to these values.

When transferring files between two microcomputers, carefully plan the exchange with the other person. The following steps outline a typical procedure:

1. Establish a communication link in the ONLINE mode. One modem must be set to ORIGINATE, the other to ANSWER.
2. Establish a convention for conversation. For example, type "*" or "/" when you are finished sending a message. This lets the other person know when you are done so he can respond.
3. When both are ready to begin the transfer, the receiver types:
CHANGE TERMINAL PARAMETERS/

4. Both change to the appropriate terminal parameters as described above, and go back online.
5. The sender types:
READY TO SEND/
This may have to be done more than once if the receiver takes more time than the sender to change the terminal parameters.
6. The receiver replies:
READY TO RECEIVE/
- 7a. The sender presses [**SELECT**]. When the TeleTari Menu appears, type L to load the file, then U to send the file.
- 7b. The receiver simultaneously presses [**START**] and [**OPTION**] to reset the buffer.
- 8a. When the transfer is complete, the send goes back online, but *should not* press any key until the receiver responds.
- 8b. The receiver should wait for a short time after the last character is received to make sure that the transfer is complete – just a few seconds without any characters appearing is sufficient. Then press [**SELECT**] and enter S to save the file.
9. After the file is saved, the receiver should go online and type: [**FILE RECEIVED**]
10. That completes the transfer.

If this procedure is carefully followed the received file will be identical to the transmitted file. No extraneous characters will be added to the beginning or end of the file.

We hope you enjoy using *TeleTari* for your computer communications. Please remember to send in your Owner Registration Card so we can notify you of any updates. If you have comments or suggestions about *TeleTari*, feel free to contact DON'T ASK COMPUTER SOFTWARE at 2265 Westwood Blvd., Suite B-150, Los Angeles, CA 90064, or call (213) 397-8811.

15. LIST OF PUBLIC ACCESS MESSAGE SYSTEMS

This list is provided by Peoples' Message System and is up to date as of November 12, 1982. DON'T ASK COMPUTER SOFTWARE does not guarantee the correctness of any of this information. If any of the telephone numbers or listings are out of date, please notify Peoples' Message System or Bill Blue as indicated at the beginning of the list. You can obtain updates of the list over your modem by contacting one of the PMS systems, also indicated.

```

*****
* PUBLIC ACCESS MESSAGE (and file transfer) SYSTEMS *
* (P.A.M.S.) last updated 11/12/82 *
* *
* Compliments of Peoples' Message System, Santee CA. *
* ( 7 1 4 ) 5 6 1 - 7 2 7 7 *
* Compiled and maintained by Bill Blue *
* (with a lot of help from his friends) *
* *
* Please send updates/corrections to: *
* P M S Santee, TCB117, 70315,1305 or BBLUE *
*****

```

```

*24 denotes 24-hour operation
#1 denotes original system of that type
-rb denotes call, let ring once and call back
-so sexually oriented messages
-rl religious orientation
! new system or new number to existing system
$ Supports VADIC 1200 baud operation
& Supports 212A 1200 baud operation
% Supports BAUDOT operation

```

Regular updates of this list may be found on CompuServe MAUG XA4, The Source PUBLIC 112, and most participating independent PMS systems. Current filesize is 32,026 bytes.

```

ABBS ABACUS II, Toledo, OH.....(419) 865 1594
ABBS AGS, Atlanta, GA.....(404) 733 3461*24
ABBS Akron Digital Group, Akron, OH.....(216) 745 7855*24
ABBS Apple Crate I, Seattle, WA.....(206) 935 9119
ABBS Apple Crate II, Seattle, WA.....(206) 244 5438
ABBS Apple Group N.J., Piscataway, NJ.....(201) 968 1074
ABBS Apple-Med, Iowa City, IA.....(319) 353 6528
ABBS Apple-Mate, New York, NY.....(201) 864 5345
ABBS Baileys Computer Store, Augusta, GA.....(404) 790 8614
ABBS Baton Rouge, LA.....(504) 291 1360
ABBS Byte Shop, Ft. Lauderdale, FL.....(305) 486 2983
ABBS Byte Shop, Miami, FL.....(305) 261 3639
ABBS Calvary Mission Church, Mnpls, MN.....(612) 471 0252-rl
ABBS CCNJ, Pompton Plains, NJ.....(201) 835 7228
ABBS Century Next Computers, St. Louis, MO... (314) 442 6502
ABBS Charlotte, NC.....(704) 364 5254
ABBS CODE, Glen Ellyn IL.....(312) 537 7063*24
ABBS Colortron Computer, WI.....(414) 637 9990*24
ABBS Compumart, Ottawa, Ontario, Canada.....(613) 725 2243
ABBS Computerland, Fremont, CA.....(415) 794 9314
ABBS Computer Corner, Amarillo, TX.....(806) 355 5610
ABBS Computer Conspiracy, Santa Monica, CA... (213) 829 1140
ABBS Computer Crossroads, Columbia, MD.....(301) 730 0922
ABBS Computer Lab, Memphis, TN.....(901) 761 4743
ABBS Computer Room, Kalamazoo, MI.....(616) 382 0101
ABBS Computer Store, Toledo, OH.....(419) 531 3845
ABBS Dallas Info Board.....(214) 248 4539
ABBS Denver, CO.....(303) 759 2625
ABBS Detroit, MI.....(313) 477 4471

```


ABBS Electro-Mart, Spokane, WA.....	(509)	534	2419*24
ABBS Fort Walton Beach, Destin, FL.....	(904)	243	1257
ABBS Gamemaster, Chicago, IL.....	(312)	475	4884*24
ABBS Hayward, CA.....	(415)	881	5662
ABBS Illini Microcomputer, Naperville, IL....	(312)	420	7995
ABBS Ketchikan, AK.....	(907)	225	6789
ABBS Madam Bokeatha Society, Houston, TX.....	(713)	455	9502
ABBS Michigan Apple-Fone, Southfield, MI.....	(313)	357	1422
ABBS Newport Beach, CA.....	(714)	645	5256*24
ABBS Oak Brook Computer, Oak Brook, IL.....	(312)	941	9009
ABBS Omaha, NE.....	(402)	339	7809
ABBS PCnet, San Francisco, CA.....	(415)	863	4703*24
ABBS Pacific Palasades, Los Angeles, CA.....	(213)	459	6400
ABBS Peoria, IL.....	(309)	692	6502
ABBS Phoenix, AZ.....	(602)	898	0891
ABBS Pirates Cove, Long Island, NY.....	(516)	698	4008
ABBS Rogers Park, Chicago, IL.....	(312)	973	2227
ABBS Saddlebrook, NJ.....	(201)	843	4563
ABBS Software Sorcery, Herndon, VA.....	(703)	471	0610
ABBS South of Market, San Francisco, CA.....	(415)	469	8111-so
ABBS St. Louis, MO.....	(314)	838	7784*24
ABBS Teledunjon I, Dallas, TX.....	(817)	469	1626
ABBS Teledunjon II, Dallas, TX.....	(214)	530	8058
ABBS Teledunjon III, Dallas, TX.....	(214)	960	7654
ABBS The Moon, Dallas, TX.....	(214)	931	3437*24
ABBS Turnersville, NJ.....	(609)	228	1149
ABBS Vancouver, B.C.....	(604)	437	7001
ABBS Vermont, Essex Junction, VT.....	(802)	879	4981*24
ABBS West Palm Beach, FL.....	(305)	848	3802
ABBS Rob Roy Computer, Yakima, WA.....	(509)	575	7704
ABBS Youngs Elect Svc., College Station, TX..	(713)	693	3462*24
ABBS #X, Atlanta, GA.....	(404)	256	1549
A-C-C-E-S-S Annapolis, MD.....	(301)	267	7666*24
A-C-C-E-S-S Olympia, WA.....	(206)	866	9043*24
A-C-C-E-S-S Phoenix, AZ.....	#1 (602)	996	9709*24
A-C-C-E-S-S Phoenix, AZ.....	&(602)	957	4428*24
A-C-C-E-S-S Phoenix, AZ.....	(602)	274	5964
A-C-C-E-S-S Scottsdale, AZ.....	(602)	998	9411*24
A-C-C-E-S-S Wyckoff, NJ.....	(201)	891	7441*24
AMIS A.R.C.A.D.E. Sterling Heights, MI.....	(313)	978	8087*24
AMIS Chicago, IL.....	(312)	789	3610*24
AMIS APOGEE Miami, FL.....	(305)	238	1231-rb
AMIS GRAFEX Cupertino, CA.....	(408)	253	5216
AMIS G.R.A.S.S. Grand Rapids, MI.....	(616)	241	1971*24
AMIS IBBBS San Jose, CA.....	(408)	298	6930
AMIS M.A.C.E. Detroit, MI.....	#1 (313)	868	2064*24
AMIS Magic Lantern, Madison, WI.....	(608)	251	8538
AMIS Starbase 12 Philadelphia, PA.....	(617)	876	4885
AMIS T.A.B.B.S. Sunnyvale, CA.....	(408)	942	6975
ARMUDIC Washington, DC.....	#1 (202)	276	8342
ARMUDIC Computer Age, Baltimore, MD.....	(301)	587	2132
BULLET-80 Boston, MA.....	&(617)	266	7789*24
BULLET-80 Chesterland, OH.....	(216)	729	2769
BULLET-80 Clarks Summit, PA.....	(717)	586	2112
BULLET-80 Danbury, CT.....	#1(203)	744	4644
BULLET-80 Fayetteville, GA.....	(404)	461	9686

BULLET-80	Hawkins, TX.....	(214)	769	3036
BULLET-80	Holstein, IA.....!	(712)	368	2651
BULLET-80	Houston, TX.....	(713)	331	2599
BULLET-80	Ironton, OH.....	(614)	532	6920
BULLET-80	Lancaster, CA.....	(805)	947	9925
BULLET-80	Langhorne, PA.....	(215)	364	2180
BULLET-80	Littlefield, TX.....	(806)	385	6843
BULLET-80	Orange County, Anaheim, CA.....	(714)	952	2110
BULLET-80	San Jose, CA.....	(408)	241	0769
BULLET-80	Seymour, CT.....	(203)	888	7952
BULLET-80	Springfield, IL.....	(217)	529	1113
BULLET-80	Tulsa, OK.....	(918)	749	0059*24
CBBS	AMRAD, Washington, DC.....	(703)	734	1387*24
CBBS	Atlanta, GA.....	(404)	394	4220*24
CBBS	Baton Rouge, LA.....	(504)	273	3116*24
CBBS	Bloomington, IN.....	(812)	334	2522
CBBS	Boston, MA.....	(617)	646	3610*24
CBBS	Cedar Rapids, IA.....	(319)	364	0811
CBBS	Chicago, IL.....#1	(312)	545	8086*24
CBBS	Corpus Christi, TX.....	(512)	855	1512
CBBS	CPEUG/ICST Gaithersburg, MD.....	(301)	948	5717
CBBS	Lambda, Berkeley, CA.....	(415)	658	2919-so
CBBS	Lawrence General Hospital, Boston, MA...!	(617)	683	2119
CBBS	LICA LIMBS, Long Island, NY.....	(516)	561	6590*24
CBBS	London, England..(European standard)..	(044)	1	399 2136
CBBS	Long Island, NY.....	(516)	334	3134*24
CBBS	MAUDE Milwaukee, WI.....	(414)	241	8364*24
CBBS	NW, Portland, OR.....	(503)	646	5510*24
CBBS	PACC, Pittsburgh, PA.....	(412)	822	7176*24
CBBS	Prince George, B.C., Canada.....	(604)	562	9515
CBBS	Proxima, Berkeley, CA.....	(415)	357	1130
CBBS	RAMS, Rochester, NY.....	(716)	244	9531
CBBS	Richfield ?	!(612)	423	5016
CBBS	Strictly Software, Honolulu, HI.....!	(808)	944	0562
CBBS	TSG, Tucson, AZ.....	(602)	746	3956*24
COMNET-80	Akron, OH.....&!	(216)	645	0827*24
COMNET-80	Las Vegas, NV.....&!	(702)	870	9986
COMNET-80	Mt. Clemens, MI.....&!	(313)	465	9531
COMNET-80	North Wales, PA.....&!	(215)	855	3809
COMNET-80	Riverside, CA.....&!	(714)	359	3189
COMNET-80	Riverside, CA.....&!	(714)	877	2253
COMNET-80	Wichita Falls, TX.....!	(817)	767	5847
CONNECTION-80	Canopus, Milwaukee, WI.....	(414)	281	0545*24
CONNECTION-80	Centereach, NY.....	(516)	588	5836
CONNECTION-80	Denver, CO.....	(303)	690	4566*24
CONNECTION-80	Escondido, CA.....	(714)	746	6265
CONNECTION-80	Fremont, CA.....	(415)	651	4147*24
CONNECTION-80	Gaithersburg, MD.....	(301)	840	8588*24
CONNECTION-80	Great Neck, NY.....	(516)	482	8491*24
CONNECTION-80	Lansing, MI.....	(517)	339	3367
CONNECTION-80	Laval BELE, Laval, Quebec, CN..	(514)	622	1274*24
CONNECTION-80	Little Rock, AS.....	(501)	372	0576
CONNECTION-80	Manhattan, NY.....	(212)	991	1664
CONNECTION-80	Orlando, FL.....	(305)	644	8327*24
CONNECTION-80	PAUG, Portland, OR.....	(503)	281	7653
CONNECTION-80	Peterborough, NH.....	(603)	924	7920
CONNECTION-80	Tulsa, OK.....	(918)	747	1310*24

CONNECTION-80 Vanmil, Milwaukee, WI.....	(414)	271	7580*24
CONNECTION-80 W. Mich. Micro Group, MI.....	(616)	457	1840*24
CONNECTION-80 Winter Garden, FL.....!	(305)	894	1886*24
CONNECTION-80 Woodhaven, NY.....	(212)	441	3755*24
CONNECTION-80 Tampa, FL.....	(813)	977	0989
CONFERENCE-TREE #3, Hayward, CA.....	(415)	538	3580
CONFERENCE-TREE #4, Santa Monica, CA.....	(213)	394	1505
CONFERENCE-TREE Anchorage, AK.....	(907)	344	5251
CONFERENCE-TREE Computerland, Honolulu, HI..!	(800)	487	2001*24
CONFERENCE-TREE Flagship, Denville, NJ.....	(201)	627	5151*24
CONFERENCE-TREE Kelp Bed, Los Angeles, CA....	(213)	372	4800
CONFERENCE-TREE Minneapolis, MN.....!	(612)	854	9691
CONFERENCE-TREE ?, New Jersey.....	(201)	627	5151
CONFERENCE-TREE Victoria, TX.....	(512)	578	5833
DATABOARD-80, Atherton, CA.....!	(415)	367	7638*24
DIAL-YOUR-MATCH #1.....	(213)	842	3322-so
DIAL-YOUR-MATCH #3.....	(912)	233	0863-so
DIAL-YOUR-MATCH #4.....	(213)?	704?	9819-so
DIAL-YOUR-MATCH #7.....	(212)	456	2528-so
DIAL-YOUR-MATCH #9.....	(213)	345	1047-so
DIAL-YOUR-MATCH #11.....	(213)	242	1882-so
FORUM-80 Augusta, GA.....	(803)	279	5392
FORUM-80 Charleston, SC.....	(803)	552	1612*24
FORUM-80 Cleveland, OH.....&	(216)	486	4176
FORUM-80 #2, Denver, CO.....	(303)	399	8858*24
FORUM-80 El Paso, TX.....	(915)	755	1000*24
FORUM-80 Ft. Lauderdale, FL.....	(305)	772	4444*24
FORUM-80 Hull, England.....	(011)	44 482	859169
FORUM-80 Kansas City, MO.....#1 &	(816)	861	7040*24
FORUM-80 Kansas City, MO.....&	(816)	931	9316
FORUM-80 Las Vegas, NV.....	(702)	362	3609*24
FORUM-80 Linden, NJ.....	(201)	486	2956*24
FORUM-80 Medford, OR.....	(503)	535	6883*24
FORUM-80 Medical, Memphis, TN.....	(901)	276	8196*24
FORUM-80 Monmouth, Brielle, NJ.....	(201)	528	6623*24
FORUM-80 Montgomery, AL.....	(205)	272	5069
FORUM-80 Nashua, NH.....	(603)	882	5041
FORUM-80 Pontiac, MI.....	(313)	335	8456
FORUM-80 Prince William County, VA.....	(703)	670	5881*24
FORUM-80 San Antonio, TX.....	(512)	340	6720
FORUM-80 Seattle, WA.....	(206)	723	3282
FORUM-80 Sierra Vista, AZ.....	(602)	458	3850*24
FORUM-80 Shreveport, LA.....	(318)	631	7107*24
FORUM-80 Westford, MA.....	(617)	692	3973
FORUM-80 Wichita, KA.....&	(316)	682	2113*24
FORUM-80 Wichita Falls, TX.....	(817)	855	3916
FORUM-80 Wild goose board, Tampa, FL.....	(813)	988	7400*24
HBBS Denver, CO.....	(303)	343	8401*24
HBBS El Paso, TX.....	(915)	592	1910
HBBS Oklahoma City, OK.....	(405)	848	9329*24
HBBS San Fernando Valley.....	(213)	366	4837
MCMS C.A.M.S. Chicago, IL.....#1	(312)	927	1020*24
MCMS J.A.M.S. Lockport, IL.....	(815)	838	1020*24
MCMS L.A.M.S. Round Lake, IL.....	(312)	740	9128

MCMS Message-82, Chicago, IL.....	(312)	622	4442*24
MCMS Metro West Database, Chicago, IL.....	(312)	260	0640*24
MCMS NC Software, Minneapolis, MN.....	(612)	533	1957*24
MCMS WACO Hot Line, Schaumburg, IL.<pvt>....	(312)	351	4374*24
MOUSE-NET Nashua, NH.....	(603)	673	9476*24
MOUSE-NET Orlando, FL.....	(305)	277	0473*24
MSG-80 Everett, WA.....	(206)	334	7394
NET-WORKS ABC, Kansas City, MO.....	(816)	483	2526
NET-WORKS Apple Grove, Dallas, TX.....	(214)	644	5197
NET-WORKS Apple Shack, Dallas, TX.....	(214)	644	4781*24
NET-WORKS Armadillo, Grand Fork, ND.....	(701)	746	4959
NET-WORKS Beach BBS, Pensacola, FL.....	(904)	932	8271
NET-WORKS Big Apple, Miami, FL.....	(305)	948	8000
NET-WORKS C.A.M.S., Decatur, IL.....	(217)	429	5541
NET-WORKS Chipmunk, Hinsdale, IL.....!	(312)	323	3741*24
NET-WORKS CLAH, Arlington Heights, IL.....	(312)	255	6489
NET-WORKS Coin Games, Los Angeles, CA.....	(213)	336	5535
NET-WORKS COMM Center NW3NAGAD, Laurel, MD..!	(301)	953	3341
	!	(301)	792 0305
NET-WORKS Computer City, Providence, RI.....	(401)	331	8450*24
NET-WORKS Computer Emporium, Des Moines, IA..	(515)	279	8863
NET-WORKS Computer Emporium, San Jose, CA....	(408)	227	0227
NET-WORKS Computer Market, Honolulu, HI.....!	(808)	521	7312
NET-WORKS Computer Pro, Ft. Worth, TX.....	(817)	732	1787
NET-WORKS Computer Station, St. Louis, MO.....	(314)	432	7120
NET-WORKS Computer Store, Honolulu, HI.....!	(808)	488	7756
NET-WORKS Computer World, Los Angeles, CA....	(213)	859	0894*24
NET-WORKS Crescent City, Baton Rouge, LA.....	(504)	454	6688
NET-WORKS Dallas, TX.....	(214)	361	1386*24
NET-WORKS Dayton, OH.....	(513)	223	3672
NET-WORKS Eclectic Computer Sys., Dallas, TX.	(214)	239	5842
NET-WORKS Encino, CA.....	(213)	345	3670
NET-WORKS Granite City, IL.....	(618)	877	2904
NET-WORKS Greenfield, IN.....	(317)	326	3833*24
NET-WORKS Hacker-net, Dallas, TX.....	(214)	824	7160
NET-WORKS Hawaii.....	(808)	521	7312
NET-WORKS Hawaii Connection, Honolulu, HI...!	(808)	423	1593*24
NET-WORKS MAGIE, Galesburg, IL.....	(309)	342	7178
NET-WORKS Magnetic Fantasies, Los Angeles, CA.	(213)	388	5198
NET-WORKS North Parks, Chicago, IL.....!	(312)	745	0924
NET-WORKS Pirate's Harbor, Boston, MA.....	(617)	738	5051
NET-WORKS Pirate's Ship, Chicago, IL.....	(312)	935	2933*24
NET-WORKS Portsmouth, NH.....	(603)	436	3461
NET-WORKS Softworx, West Los Angeles, CA.....	(213)	473	2754
NET-WORKS Sparklin' City, Corpus Christi, TX.	(512)	882	6569
NET-WORKS St. Louis, MO.....	(314)	781	1308
NET-WORKS Warlock's Castle St. Louis, MO.....	(618)	345	6638
NET-WORKS Winesap, Dallas, TX.....	(214)	824	7455
ONLINE CDC, San Diego, CA.....	(714)	452	6011
ONLINE Computerland, Montreal, Quebec, CN...!	(514)	931	0458*24
ONLINE Dickinsons Movie Guide, Mission, KS...	(913)	432	5544
ONLINE Indianapolis, IN.<ID#=GUES, pswd=pass>.	(317)	787	9881*24
ONLINE Saba, San Diego, CA.....	(714)	692	1961
ONLINE Santee, CA....<ID#=GUEST, pswd=PASS>..	(714)	561	7271*24
PASBBS Bellflower, CA.....	(213)	531	1057

PASBBS Torrance, CA.....#1 (213) 516 7089*24

PBBS Co-operative Comp Svc, Palatine, IL.....(312) 359 9450*24

PET BBS S.E.W.P.U.G., Racine, WI.....(414) 554 9520*24

PET BBS Commodore Comm., Lake St. Louis, MO..(314) 625 4576*24

PMS - **IF**, Anaheim, CA.....(714) 772 8868*24

PMS - Anchorage, AK.....(907) 344 8558

PMS - Apple Guild, Weymouth, MA.....(617) 767 1303*24

PMS - Arlington Heights, IL.....(312) 960 1629*24

PMS - Baltimore, MD.....(301) 764 1995*24

PMS - Campbell, CA.....(408) 370 0873*24

PMS - Century 23, Las Vegas, NV.....(702) 878 9106*24

PMS - Chicago, IL.....(312) 373 8057*24

PMS - Cincinnati, OH.....(513) 671 2753

PMS - Computer City, Danvers, MA.....(617) 774 7516

PMS - Ellicott City, MD.....(301) 465 3176

PMS - Escondido, CA.....(714) 746 0667

PMS - Ft. Smith Comp. Club, Ft. Smith, AK....(501) 646 0197

PMS - Apple Bits, Kansas City, MO.....(913) 677 1299*24

PMS - Gulfcoast, Freeport, TX.....(713) 233 7943*24

PMS - Indianapolis, IN.....(317) 787 5486*24

PMS - Lakeside, CA. (type PMS to activate)...(714) 561 7271*24

PMS - Los Angeles, CA.....(213) 334 7614*24

PMS - Massillon, OH.....(216) 832 8392*24

PMS - McGraw-Hill Books, New York, NY.....(212) 997 2488

PMS - Mesa Systems, San Diego, CA.....(714) 271 8613*24

PMS - Minneapolis, MN.....(612) 929 6699*24

PMS - Mission Valley, CA.....(714) 295 8280

PMS - I.A.C., Lake Forest, IL.....(312) 295 6926*24

PMS - O.A.C., Woodland Hills, CA.....(213) 346 1849*24

PMS - Pikesville, MD.....(301) 653 3413

PMS - Pleasanton, CA.....(415) 462 7419*24

PMS - Portola Valley, CA.....(415) 851 3453*24

PMS - RAUG, Akron, OH.....(216) 867 7463*24

PMS - Rutgers Univ. Microlab, Piscataway, NJ.(201) 932 3887

PMS - San Diego, CA.....(714) 582 9557*24

PMS - Santa Clara, CA.....(408) 554 9036

PMS - Santa Cruz, Aptos, CA.....(408) 688 9629*24

PMS - Santee, CA.....#1 (714) 561 7277*24

PMS - Shrewsbury, NJ.....(201) 747 6768

PMS - Software Unltd, Kenmore, WA.....(206) 486 2368*24

PMS - Tampa, FL..... (don temp)

PMS - Your Computer Connection, KS Cty, MO...(913) 381 1021

PSBBS Baltimore, MD.....(301) 994 0399*24

PSBBS Washington, DC.....(202) 337 4694*24

RATS Systems.....#1 (201) 887 8874

RATS Homewood, IL.....(312) 957 3924

RATS Wenonah, NJ.....(609) 468 5293

RATS Wenonah, NJ #2.....(609) 468 3844

RCP/M AABBS New York, NY.....(212) 787 5520

RCP/M AIMS Hinsdale, IL.....(312) 789 0499*24

RCP/M Arlington, VA.....(703) 536 3769

RCP/M CBBS CP/M Net Simi Valley, CA.....(805) 527 9321

RCP/M CBBS Columbus, OH.....(614) 272 2227*24

RCP/M CBBS Frog Hollow, Vancouver, BC, CN....(604) 873 4007*24

RCP/M CBBS Pasadena, CA.....	(213)	799	1632*24
RCP/M CBBS RLP, MacLean, VA.....	(703)	524	2549*24
RCP/M CBBS Sacramento, CA.....	(916)	483	8718*24
RCP/M Chuck Forsberg, OR.....	(503)	621	3193
RCP/M Collossal Oxgate, ??	(408)	263	2588
RCP/M CUG-NOTE, Denver, CO.....	(303)	781	4937*24
RCP/M CUG-NODE, PA State College.....	(814)	238	4857*24
RCP/M Detroit, MI.....	(313)	584	1044-rb
RCP/M Geneseo, IL.....	(309)	944	5455
RCP/M HAPN: Hamilton, Ontario, CN.....	(416)	335	6620*24
RCP/M IBM-PC, Niles, IL.....&(312)		647	7636*24
RCP/M Logan Square, Chicago, IL.....	(312)	252	2136
RCP/M MCBBS Keith Petersen, Royal Oak, MI....	(313)	759	6569-rb
RCP/M MCBBS Ken Stritzel, Flanders, NJ.....	(201)	584	9227*24
RCP/M MCBBS Superbrain, Lexington, MA.....\$&(617)		862	0781*24
RCP/M MCBBS TCBBS Dearborn, MI.....	(313)	846	6127*24
RCP/M Mississauga HUG, Toronto, Ont., CN...\$&(416)		826	5394*24
RCP/M NEI, Chicago, IL.....	(312)	949	6189
RCP/M Palatine, IL.....&(312)		359	2553*24
RCP/M RBBS Allentown, PA.....	(215)	398	3937*24
RCP/M RBBS ANAHUG, Anaheim, CA.....	(714)	774	7860*24
RCP/M RBBS Arvada Elect., Colorado Springs, CO.	(303)	634	1158*24
RCP/M RBBS Boulder, CO.....	(303)	499	9169
RCP/M RBBS Bethesda, MD.....	(301)	229	3196
RCP/M RBBS Comp. Tech. Assoc., El Paso, TX...	(915)	533	2202*24
RCP/M RBBS Computerized Services, Tampa, FL.!	(813)	988	7400*24
RCP/M RBBS Computron, Edmonton, Alberta, Can.	(403)	482	6854*24
RCP/M RBBS Cranford, NJ.....	(201)	272	1874
RCP/M RBBS DataTech 001, San Carlos, CA...#1\$&(415)		595	0541*24
RCP/M RBBS DataTech 004, Sunnyvale, CA.....!	(408)	732	2433
RCP/M RBBS DataTech 006, San Francisco, CA..!	(415)	563	4953
RCP/M RBBS Edmonton, Alberta, Canada.....	(403)	454	6093*24
RCP/M RBBS El Paso, TX.....	(915)	598	1668
RCP/M RBBS Fort Mill, SC.....	(803)	548	0900*24
RCP/M RBBS GFRN Dta Exch. Garden Grove, CA.\$&(714)		534	1547*24
RCP/M RBBS GFRN Dta Exch. Palos Verdes, CA.\$&(213)		541	2503*24
RCP/M RBBS Grafton, VA.....	(804)	898	7493
RCP/M RBBS Huntsville, AL.....	(205)	895	6749-rb
RCP/M RBBS Hyde Park, IL.....	(312)	955	4493
RCP/M RBBS Laurel, MD.....	(301)	953	3753*24
RCP/M RBBS Larkspur, CA.....	(415)	461	7726*24
RCP/M RBBS Marin County, CA.....	(415)	383	0473*24
RCP/M RBBS MUG, Mission, KS.....&(913)		362	9583*24
RCP/M RBBS Napa Valley, CA.....	(707)	253	1523
RCP/M RBBS Ocean, NJ.....&(201)		775	8705
RCP/M RBBS Piconet ??	!(415)	965	4097*24
RCP/M RBBS San Jose Oxgate, San Jose, CA....	(408)	287	5901*24
RCP/M RBBS Surrey, Vancouver, BC, CN.....	(604)	584	2643*24
RCP/M RBBS Pontiac, MI.....	(313)	338	85-5
RCP/M RBBS Paul Bogdanovich, NJ.....	(201)	747	7301
RCP/M RBBS Rochester, NY.....	(716)	223	1100*24
RCP/M RBBS Rutgers, New Brunswick, NJ.....	(201)	932	3879*24
RCP/M RBBS San Diego, CA.....\$&(714)		273	4354*24
RCP/M RBBS Sofwaire Store, Los Angeles, CA...	(213)	479	3189*24
RCP/M RBBS Software Tools, Australia.....	(02)	997	1836
RCP/M RBBS Southfield, MI.....	(313)	559	5326*24
RCP/M RBBS Westland, MI.....	(313)	729	1905-rb
RCP/M RBBS Woodstock, NY.....	(914)	679	8734
RCP/M RBBS Yelm, WA.....	(206)	458	3086-rb
RCP/M Silicon Valley, CA.....	(408)	246	5014*24

RCP/M SJBBS Bearsville, NY.....	(914)	679	6559-rb
RCP/M SJBBS Johnson City, NY.....	(607)	797	6416
RCP/M TRS-80 Chicago, IL.....	(312)	949	6189
RCP/M Terry O'Brien, Vancouver, BC, Canada...	(604)	584	2543
Remote Northstar Atlanta, GA.....	#1 (404)	926	4318*24
Remote Northstar Denver, CO.....	(303)	444	7231
Remote Northstar Largo, FL.....	(813)	535	9341*24
Remote Northstar NASA, Greenbelt, MD.....	(301)	344	9156
Remote Northstar Santa Barbara, CA.....	(805)	682	7876
Remote Northstar Santa Barbara, CA.....	(805)	964	4115
Remote Northstar Virginia Beach, VA.....	(804)	340	5246
ST80-CC Lance Micklus, Inc. Burlington, VT.#1	(802)	862	7023*24
ST80-PBB Monroe Camera Shop, Monroe, NY.....	(914)	782	7605
TCBBS B.A.M.S. New York, NY.....	(212)	362	1040*24
TCBBS Leigh's Computer World, NY.....	(212)	879	7698
TCBBS W.E.B.B. New York, NY.....	#1(212)	799	4649
TRADE-80 Albany, GA.....	!(912)	439	7440*24
TRADE-80 Ft. Lauderdale, FL.....	#1 (305)	525	1192
TRADE-80 Omaha, NE.....	(402)	292	6184
TRADE-80 Erie, PA.....	(814)	898	2952*24

MISCELLANEOUS OR UNKNOWN SYSTEM TYPES

ABBS (?) Queens, NY.....	(212)	896	0519
? (Western Massachusettes).....	(413)	637	3515
Adventure BBS.....	(516)	621	9296
Alpha, Tampa, FL..<acct#=ABCD00, pwd=TRYIT>..	(813)	251	4095*24
Apollo's Chariot, Apollo, FL.....	(813)	645	3669
ARBB Seattle, WA.....	(206)	546	6239
Aviators Bulletin Board, Sacramento, CA.....	(916)	393	4459
Bathroom Wall BBS, San Antonio, TX.....	(512)	655	8143
Baton Rouge Data System, Baton Rouge, LA.....	(504)	926	0181
BBS Annandale, VA.....	(703)	978	9754
BBS B.R., Los Angeles, CA.....	(213)	394	5950*24
BBS Computer Applications Co., Poland, OH....	(216)	757	3711
BBS Homestead, FL.....	(305)	246	1111
BBS IBM PC Billings, MT.....	(406)	656	9624
BBS IBM PCUG Annandale, VA.....	(703)	560	0979
BBS Living Videotext, Menlo Park, CA.....	(415)	327	8876*24
BBS Pensacola, FL.....	(904)	477	8783
BBS SUE Milwaukee, WI.....	(414)	483	4578
BBS-80 DALTRUG, Dallas, TX.....	(214)	235	8784*24
Big Top Games System, Milwaukee, WI.....	(414)	259	9475
Boston Information Exchange, Boston, MA.....	&(617)	423	6985*24
Bronx BBS, NY.....	(212)	933	9459
Bradley Computer BBS	(813)	734	7103
BSBB Tampa, FL.....	(813)	885	6187
Capital City BBS, Albany, NY.....	(518)	346	3596*24
Carrier 2 Alexandria, VA.....	(703)	823	5210
C-HUG Bulletin Board, Fairfax, VA.....	(703)	360	3812*24
COMM-80 Queens, NY.....	(212)	897	3392*24
Compusystems, Columbia, SC.....	(803)	771	0922

Computer Arts Message System, Newhall, CA....	(805)	255	6445
Corsair, Goldcoast, FL.....	(305)	968	8653
Datamate, Canoga Park, CA.....	#1 (213)	998	7992-so
Dimension-80 Orange, CA.....	(714)	974	9788
Distra-Soft, Montreal, Quebec, CN.....	(514)	327	5764*24
Dragon's Game System.....	(pass=DRAGON)...(213)	428	5206
Electric Line Connection, Sherman Oaks, CA...	(213)	789	9512
Experimental-80 Kansas City, MO.....	(913)	676	3613
FBBS Skokie, IL.....	#1 (312)	677	8514
Greene Machine, WPB, FL.....	(305)	965	4388-so
Hermes-80 Allentown, PA.....	(215)	434	3998
HEX Silver Spring, MD.....	%(301)	593	7033*24
HMS Horny Message System, Oakland, CA.....	(415)	845	2079-so
IDBN Info-Net, Costa Mesa, CA.....	(714)	545	7359
INFOEX-80 West Palm Beach, FL.....	(305)	683	6044*24
JCTS Redmond, WA.....	(206)	883	0403*24
Kinky Kumputer, San Francisco, CA.....	!(415)	626	5465-so
Kluge Computer.....	\$&(213)	947	8128*24
L.A. Interchange, Los Angeles, CA.....	(213)	631	3186*24
Lehigh Press BB, PA.....	#1 (215)	435	3388
Lethbridge Gaming system, Lethbridge, AB....	(403)	320	6923
LITHO/NET.....	!(800)	831	6964
Long Beach Community Computer.....	(213)	591	7239*24
Mail Board-82 Seattle, WA.....	(206)	527	0897*24
MARS/RP Rogers Park, IL.....	(312)	743	8176*24
Micro-80 West Palm Beach, FL.....	(305)	686	3695
Micro Informer.....	(813)	884	1506
Midwest, St. Louis, MO.....	(314)	227	4312-so
Mini-Bin Seattle, WA.....	(206)	762	5141*24
NBBS Norfolk, VA.....	(804)	444	3392
NESSY Chicago, IL.....	#1 (312)	773	3308
New England Comp. Soc., Maynard, MA.....	(617)	897	0346
New Jersey TELECOM.....	#1 (201)	635	0705*24
North Orange County Computer Club.....	(714)	633	5240
Novation CO., Los Angeles, CA....<pass=CT>..	(213)	881	6880
Nybbles-80 Elmsford, NY.....	(914)	592	5385
OARCS Portland, Oregon.....	(503)	641	2798
OCTUG Orange County, Garden Grove, CA.....	!(714)	530	8226
Oracle North Hollywood, CA.....	(213)	980	6743-so
ORACLE Classified System, Austin, TX.....	(512)	346	4495
Orange County Dta Exchange, Garden Grove, CA	(714)	537	7913
Personal Msg. System-80, Deerfield Bch,FL...&	(305)	427	6300*24
PET BBS Commodore, Chicago, IL.....	!(312)	397	0871*24
PET BBS AVC Comline, Indianapolis, IN.....	!(317)	255	5435*24
PET BBS KCPUG, Kansas City, KS.....	!(816)	356	2382*24
PET BBS SE Wyoming PUG.....	!(307)	637	6045*24
PET BBS PSI WordPro, Ontario, CN.....	#1!(416)	624	5431*24
PET BBS TPUG, Toronto, Ontario, CN.....	!(416)	223	2625*24
PHOTO-80, Haledon, NJ.....	(201)	790	6795
Potomac Micro Magic Inc., Falls Church, VA...	(703)	379	0303*24
Remote Apple Jackson, MS.....	(601)	992	1918*24
SATUG BBS, San Antonio, TX.....	(512)	494	0285
Seacomm-80 Seattle, WA.....	(206)	763	8879*24
SIGNON Reno, NV.....	<pswd=FREE>..(702)	826	7234
	\$(702)	826	7277
SISTER Staten Island, NY.....	(212)	442	3874*24
Sunrise Omega-80, Oakland, CA.....	(415)	452	0350
System/80 San Leandro, CA.....	(415)	895	0699
Talk-80 ROBB, Portsmouth, VA.....	(804)	484	9636

TCUG BBS, Washington, DC.....	(703)	451	8475*24
TECOM-80, Tampa, FL.....	!(813)	839	6746
Telcom 7 New Fairfield, CT.....	(203)	746	5763*24
Telemessage-80, Atlanta, GA.....	(404)	962	0616
Westside Download, Detroit, MI.....	(313)	533	0254
XBBS Hamilton, OH.....	(513)	863	7681*24

- Notes -

TeleTari™

The Friendly Terminal

by Harry Koons



The link between your modem and the outside world.

TeleTari is:

- menu operated
- highly adaptable
- equipped with buffer of up to 20K
- suitable for any RS-232 application
- compatible with 1200 baud modems & BIT 3 Full-view 80™ board

TeleTari is a powerful, flexible telecommunications package, that's so simple to use, you'll find your ATARI has never had such easy access to the whole world of telecommunications.

With TeleTari your modem can access bulletin boards and large time-sharing systems, send and receive program and text files, and communicate with almost any remote computer you wish. It's all done with the convenience of menus, so it's a cinch to use; just answer the prompts and TeleTari does the rest.

A large buffer (20K in an ATARI with 48K RAM) stores your data and lets you review, save, and print data at your convenience. TeleTari's adaptable design lets you use it with a wide variety of modems and remote computers.

A menu enables you to set terminal parameters on your 850 Interface to suit your modem and communication goals, and enables you to save parameter sets for future use. Plus, commonly-used parameters are included on the TeleTari disk.

Since TeleTari works through the RS-232 port, you can use it for any other RS-232 application you may have, in addition to modem/telephone communications.

Phone Right In With TeleTari.