

"THE MATERIAL HEREIN IS FOR INFORMATION PURPOSES ONLY AND IS SUBJECT TO CHANGE WITHOUT NOTICE. DIGITAL EQUIPMENT CORPORATION ASSUMES NO RESPONSIBILITY FOR ANY ERRORS WHICH MAY APPEAR HEREIN."

FIELD MAINTENANCE PRINT SET

"THIS DRAWING AND SPECIFICATIONS, HEREIN, ARE THE PROPERTY OF DIGITAL EQUIPMENT CORPORATION AND SHALL NOT BE REPRODUCED OR COPIED OR USED IN WHOLE OR IN PART AS THE BASIS FOR THE MANUFACTURE OR SALE OF ITEMS WITHOUT WRITTEN PERMISSION. COPYRIGHT © 1976, DIGITAL EQUIPMENT CORPORATION."

TABLE OF CONTENTS

LA8 FIELD MAINTENANCE PRINT SET	B-TC-LA8-P-5
DRAWING DIRECTORY	B-DD-LA8-P
LA180 INTERFACE PARTS LIST	A-PL-LA8-P-0
FIELD ACCEPTANCE AND INSTALLATION PROCEDURE	A-SP-LA8-P-1
SHIPPING LIST	A-PL-LA8-P-2
SOFTWARE LIST	A-PL-LA8-P-3
ENGINEERING SPECIFICATION	A-SP-LA8-P-4
LA180 INTERFACE	D-CS-M8365-0-1
INTERFACE CABLE (BC11S)	D-IA-BC11S-0-0
LA180 DRAWING DIRECTORY (COMPLETE SET)	B-DD-LA180-0

UNIT VARIATIONS COVERED BY THIS PRINT SET
LA8-PA
LA8-PB
LA8-PC
LA8-PD
LA8-PK
LA8-PL
LA8-PM
LA8-PN

LA8 Field Maintenance Print Set

Digital Equipment Corporation

PRINT SET ORDER NUMBER:
MP00075



TITLE: LA180 INTERFACE

SIZE B	CODE TC	NUMBER LA8-P-5	REV.
DIST.			

REV.	CHG. NO.	DATE	USED ON OPTION/MODEL	DRN.	DATE	TITLE: LA180 INTERFACE
				J. DEVIN	3/10/76	
				<i>[Signature]</i>	3/10/76	

EN-01124-18-NB78-1227

SHEET 1 OF 1

CUSTOMER PRINT SET INDEX

THIS IS PRINT SET

SEQUENCE **77**
FOR TABLE OF CONTENTS REFER TO **B-TC-LA8-P-5**

SEQUENCE **77**

UNIT VARIATIONS

VAR	TITLE	PRINT SET		
LA8-PA	LA180 UNIT ASSY (115V 60HZ.)			
LA8-PB	LA180 UNIT ASSY (230V 60HZ.)			
LA8-PC	LA180 UNIT ASSY (115V 50HZ.)			
LA8-PD	LA180 UNIT ASSY (230V 50HZ.)			
LA8-PK	LA180 UNIT ASSY (115V 60HZ.)			
LA8-PL	LA180 UNIT ASSY (230V 60HZ.)			
LA8-PM	LA180 UNIT ASSY (115V 50HZ.)			
LA8-PN	LA180 UNIT ASSY (230V 50HZ.)			

EN-0100Z-1A-10-0973-1281

REV	CHG. NO.	DATE

USED ON OPTION/MODEL	DRN.	DATE	TITLE	SIZE	CODE	NUMBER	REV
	J. DEVIN	1-22-76	LA180 INTERFACE	B	DD	LA8-P	
	<i>[Signature]</i>	31-MAR-76					
	<i>[Signature]</i>	31-MAR-76					
	PROD.	7 APR 76					
	FIELD USE	31-MAR-76					
	<i>[Signature]</i>						
SHEET 1 OF 2			DIST				

ELECTRICAL						MECHANICAL											
CUSTOMER PRINT SET		MFG. SET	FIND NO.	DRAWING NO.	REV	NO OF SHT	DESCRIPTION	OPTION NO./FILE DATE	CUSTOMER PRINT SET		MFG. SET	FIND NO.	DRAWING NO.	REV	NO OF SHT	DESCRIPTION	OPTION NO./FILE DATE
			1	A-PL-LA8-P-0		1	LA180 INTERFACE PARTS LIST					1	A-PL-LA8-P-0		1	LA180 INTERFACE PARTS LIST	
				A-SP-LA8-P-1			FIELD ACCEPT. AND INSTALL. PROC.										
				A-PL-LA8-P-2		1	SHIPPING LIST										
				A-PL-LA8-P-3		1	SOFTWARE LIST										
				A-SP-LA8-P-4		4	ENGINEERING SPECIFICATION										
				B-TC-LA8-P-5		1	FIELD MAINTENANCE PRINT SET										
				A-SP-LA8-P-6		5	LA8 IN-HOUSE ACCEPT. PROCED.										
			2	D-CS-M8365-0-1			LA180 INTERFACE FOR 8/E/F/M/A M8365										
				K-CO-M8365-0-4			X-Y HOLE COORDINATE LOCATION										
				D-AH-M8365-0-5			ASSY/DRILLING HOLE LAYOUT										
				B-MH M8365-0-6			MODULE HISTORY										
			3	B-DD-LA180-0			LA180 DRAWING DIRECTORY	LA180				3	B-DD-LA180-0			LA180 DRAWING DIRECTORY	LA180
			4	D-IA-BC11S-0-0		1	INTERFACE CABLE					4	D-IA-BC11S-0-0		1	INTERFACE CABLE	

CUSTOMER PRINT SET CODES
X = PRINT OF DOCUMENT INCLUDED IN PRINT SET
C = INCLUDES ALL PRINTS INDICATED ON DOCUMENT
S = CONFIDENTIAL AUTHORIZED SIGNATURE REQUIRED

TITLE
LA180 INTERFACE
SHEET 2 OF 2
SIZE CODE
B DD LA8-P
NUMBER
REV

DRB 108

EN-01000-20-10-R970-1000

DIGITAL EQUIPMENT CORPORATION
MAYNARD, MASSACHUSETTS

PARTS LIST

DIGITAL EQUIPMENT CORPORATION MAYNARD, MASSACHUSETTS PARTS LIST				QUANTITY / VARIATION												
MADE BY JOHN KIRK		CHECKED <i>[Signature]</i>		SECTION 1												
DATE 31-MAR-76		DATE 31-MAR-76		ISSUED SECT. 1												
ENG JOHN KIRK		PROD <i>[Signature]</i>		ISSUED SECT. 1												
DATE 31-MAR-76		DATE 8 APR. 76														
ITEM NO.	DWG NO. / PART NO.	DESCRIPTION	LA8-PA	-PB	-PC	-PD	-PK	-PL	-PM	-PN						
1	D-CS-M8365-0-1	LA180 INTERFACE MODULE	1	1	1	1	1	1	1	1						
2	D-IA-BC11S-25-0	INTERFACE CABLE (25 FEET)	1	1	1	1	0	0	0	0						
3	D-IA-BC11S-A0-0	INTERFACE CABLE (100 FEET)	0	0	0	0	1	1	1	1						
4	A-PL-LA8-P-2	SHIPPING LIST	1	1	1	1	1	1	1	1						
5	A-PL-LA180-PA-0	LA180 UNIT ASSY 115V 60HZ.	1	0	0	0	1	0	0	0						
6	A-PL-LA180-PB-0	LA180 UNIT ASSY 230V 60HZ.	0	1	0	0	0	1	0	0						
7	A-PL-LA180-PC-0	LA180 UNIT ASSY 115V 50HZ.	0	0	1	0	0	0	1	0						
8	A-PL-LA180-PD-0	LA180 UNIT ASSY 230V 50HZ.	0	0	0	1	0	0	0	1						
TITLE LA180 INTERFACE		ASSY NO. B-DD-LA8-P		SIZE CODE A PL		NUMBER LA8-P-0					REV.		ECO NO.			
SHEET 1 OF 1		DIST.														

DIGITAL EQUIPMENT CORPORATION
MAYNARD, MASSACHUSETTS

ENGINEERING SPECIFICATION

DATE 3/31/76

TITLE FIELD INSTALLATION & ACCEPTANCE PROCEDURE FOR LA8

REVISIONS

REV	DESCRIPTION	CHG NO	ORIG	DATE	APPD BY	DATE

ENG Carl Cline	APPD <i>Carl Cline</i> 31-Mar-76	SIZE A	CODE SP	NUMBER LA8-P-1	REV
----------------	----------------------------------	--------	---------	----------------	-----

DEC 16-1982-1079-0071
DIA '07

1 of 3

This drawing and specifications, hereon, are the property of Digital Equipment Corporation and shall not be reproduced or copied or used in whole or in part as the basis for the manufacture or sale of items without written permission.

ENGINEERING SPECIFICATION

CONTINUATION SHEET

TITLE FIELD INSTALLATION & ACCEPTANCE PROCEDURE FOR LA8

I. GENERAL

This procedure defines the performance standards required of the following LA8 configurations:

LA8-PA	LA180 and M8365	115V	60 Hz	25 ft. cable
LA8-PB	LA180 and M8365	230V	60 Hz	25 ft. cable
LA8-PC	LA180 and M8365	115V	50 Hz	25 ft. cable
LA8-PD	LA180 and M8365	230V	50 Hz	25 ft. cable
LA8-PK	LA180 and M8365	115V	60 Hz	100 ft. cable
LA8-PL	LA180 and M8365	230V	60 Hz	100 ft. cable
LA8-PM	LA180 and M8365	115V	50 Hz	100 ft. cable
LA8-PN	LA180 and M8365	230V	50 Hz	100 ft. cable

II. INSPECTION

After removing the M8365 from the packing material, inspect the LA8 for the following:

- Loose or broken components
- Inventory the hardware against the shipping list
- Inventory the prints against the shipping list, if ordered
- Inventory the software against the software list, if ordered

III. INSTALLATION PROCEDURE

Before installing the M8365 into the OMNIBUS, insure that the desired device code is selected (65 or 66).

Device Code 66 =	Jumper 1	Jumper 2
Device Code 65 =	A to B	C to D
	A to D	B to C

Installing the M8365 into a PDP8A:

- Remove the consoles from the front of the 8A.
- Route the BC11-S cable end, marked "P1", through the access hole at the rear of the machine and connect it to the M8365.

DEC FORM NO EN-01022-16-N370-(381)
ORA 108

SHEET 2 OF 3

ENGINEERING SPECIFICATION

CONTINUATION SHEET

TITLE FIELD INSTALLATION & ACCEPTANCE PROCEDURE FOR LA8

- Insert the M8365 in the lowest available vacant slot in the OMNIBUS.
- Dress the BC11-S properly in the 8A and replace the consoles.

Installing the M8365 into a PDP8E/M/F:

- Remove the top cover.
- Route the BC11-S cable end, marked "P1", through the rear of the machine and connect it to the M8365.
- Insert the M8365 into any vacant slot in the OMNIBUS.
- Dress the BC11-S and strain relief the cable at the rear of the machine.
- Replace the top cover.

Before connecting the BC11-S cable to the LA180, insure that the printer can run in the self test mode. Refer to LA180 User's Manual.

IV. ACCEPTANCE PROCEDURE

Perform the following procedure using the MAINDEC-08-DILAC.

- Run one pass of the Operator's Intervention Tests. Starting address 200, SR=0000. Approximate time 10 min.
- Run several passes of tests 20 through 31. Starting address 201, SR=0000. Approximate time 15 min.
- Run test 60 for approximately 15 minutes. Approximate time 15 min.

Refer to the MAINDEC listing for additional information regarding error reporting and operator usage.

Other reference material that may be required:

- LA180 User's Manual EK-LA180-OP
- LA8 Printset MP-000075
- LA8 Maintenance Manual EK-LA0000-MM

DEC FORM NO EN-01022-16-N370-(381)
ORA 108

SHEET 3 OF 3

DIGITAL EQUIPMENT CORPORATION
MAYNARD, MASSACHUSETTS

PARTS LIST

MADE BY JOHN KIRK
DATE 31-MAR-76
ENG JOHN KIRK
DATE 31-MAR-76

CHECKED [Signature]
DATE [Signature]
PROD [Signature]
DATE 31-MAR-76

SECTION 1
ISSUED SECT. 1

QUANTITY / VARIATION

ITEM NO.	DWG NO. / PART NO.	DESCRIPTION	QUANTITY / VARIATION										
			LAB-PA	" - PB	" - PC	" - PD	" - PE	" - PF	" - PG	" - PH			
1	MP00075	*MAINTENANCE PRINT SET (LAB-P)	0	0	0	0	0	0	0	0	0	0	0
2	ZF224-RB	*LA180 DIAGNOSTIC DOCUMENT PAPER EP.KIT	0	0	0	0	0	0	0	0	0	0	0
3	EK-LA008-MM-001	*MAINTENANCE MANUAL	0	0	0	0	0	0	0	0	0	0	0
		* PURCHASED SEPARATELY											

TITLE SHIPPING LIST	ASSY NO. B-DD-LAB-P	SIZE CODE A PL	NUMBER LAB-P-2	REV.	ECO NO.
	SHEET 1 OF 1	DIST.			

DIGITAL EQUIPMENT CORPORATION

MAYNARD, MASSACHUSETTS

PARTS LIST

MADE BY JOHN KIRK	CHECKED <i>[Signature]</i>	SECTION
DATE 31-MAR-76	DATE 31-MAR-76	/
ENG JOHN KIRK	PROD <i>[Signature]</i>	ISSUED SECT.
DATE 31-MAR-76	DATE 9 APR 76	/

QUANTITY / VARIATION

ITEM NO.	DWG NO. / PART NO.	DESCRIPTION	LAB P (ALL)														
1	PB-DZF224-RB	MINDEC-08-DILAC-A Software Kit	1														

TITLE	ASSY NO. <i>[Signature]</i>	SIZE	CODE	NUMBER	REV.	ECO NO.
LAB-P SOFTWARE LIST		A	PL	LAB-P-3		
	SHEET 1 OF 1	DIST.				

DIGITAL EQUIPMENT CORPORATION
MAYNARD, MASSACHUSETTS

ENGINEERING SPECIFICATION

TITLE LAB-XX DATE 12/24/75

REVISIONS				
REV	DESCRIPTION	CHG NO	ORIG	DATE

DEC 16-10979-1079A-RB73
DRA 108

APPD *John H. 16 Jan 76* *John R. L.*
NUMBER LAB-P-4
SIZE CODE SP A
SHEET 1 OF 4

ENGINEERING SPECIFICATION

TITLE LAB-XX CONTINUATION SHEET

GENERAL:
The LAB-XX is an OMNIBUS compatible controller incorporating the LAL80 DEPrinter in its various voltage and frequency variations. The controller is a single quad card which plugs into the OMNIBUS of the PDP-8/E/F/M/A.

VARIATIONS:

LAB-PA - M8365, BC11S-25, LAL80PA	117V 60 HZ
LAB-PB - M8365, BC11S-25, LAL80PB	230V 60 HZ
LAB-PC - M8365, BC11S-25, LAL80PC	117V 50 HZ
LAB-PD - M8365, BC11S-25, LAL80PD	230V 50 HZ
LAB-PK - M8365, BC11S-A0, LAL80PA	117V 60 HZ
LAB-PL - M8365, BC11S-A0, LAL80PB	230V 60 HZ
LAB-PM - M8365, BC11S-A0, LAL80PC	117V 50 HZ
LAB-PN - M8365, BC11S-A0, LAL80PD	230V 50 HZ

PHYSICAL:
A single quad card (M8365), a 25 or 100 foot cable and the appropriate LAL80 variation.

ELECTRICAL:
+5 volts @ 0.65 amps (controller only, the LAL80 requires a separate source of 117/230 volts A.C.).

PROGRAMMING:
The LAB is programmed as the L88 E/F or KL8 series serial line controllers (outout only). The interpretation of data may, however, be different between the LAL80 and other printing devices.

6660 - Set the print flag, an internal instruction requiring no LAL80 interaction, directly sets the print flag.

DEC FORM NO DEC 16-(381)-1022-N370
DRA 108

SIZE CODE SP A
NUMBER LAB-P-4
SHEET 2 OF 4

ENGINEERING SPECIFICATION

TITLE LAB-XX CONTINUATION SHEET

6661 - Skip on print flag, if the print flag is set, the next sequential instruction is skipped.

6662 - Clear the printer flag, at TP3 of this instruction the print flag is directly cleared.

6663 - Unused

6664 - Load the printer buffer, AC 5-11 is transferred to a buffer internal to the M8365 module and a transfer flag is set. If the LAL80 is online, a strobe pulse is issued, starting at TP4 of this instruction and of length 250 nanosecond (+/-20%). If the LAL80 is not online, this transfer flag remains set. Setting the LAL80 online will initiate the transfer.

6665 - Set or clear the interface interrupt enable. If AC11 (1) when this instruction is issued interrupt enable is set, if AC11 (0), interrupt is cleared.

6666 - A combination of 6662 and 6664.

6667 - Unused

INITIALIZATION:
Powering up the computer into which the M8365 is plugged, depressing the INIT button (initialize key), or issuing a CAF instruction causes the following:
Interrupt Enable is set.
The print flag is cleared.
The Internal Data Buffer is cleared.

INTERCONNECTION:
The LAB-XX has either a 25 foot or 100 foot cable to the LAL80. Applications requiring cable lengths greater than 100 feet should be referred to Digital's Computer Special Systems Group.
The connector on the M8365 module is a 40 pin Berg type, see Table 1 for pinout details.

DEC FORM NO DEC 16-(381)-1022-N370
DRA 108

SIZE CODE SP A
NUMBER LAB-P-4
SHEET 3 OF 4

ENGINEERING SPECIFICATION

TITLE LAB-XX CONTINUATION SHEET

Device Code

66 - Standard

65 - Optional, jumper selectable

Environment

See PDP 8/A specification (Dec Std. 102-C)

Table 1

Signal Name	Pin
Demand Gnd	X W
Strobe Gnd	VV UU
Online Gnd	N M
Data MSB (P07) Gnd	DD CC
Data (P06) Gnd	RR PP
Data (P05) Gnd	TT SS
Data (P04) Gnd	FF EE
Data (P03) Gnd	BB AA
Data (P02) Gnd	LL KK
Data LSB (P01) Gnd	JJ HH

See DEC part #12-09941-02 for pin definitions.

DEC FORM NO DEC 16-(381)-1022-N370
DRA 108

SIZE CODE SP A
NUMBER LAB-P-4
SHEET 4 OF 4

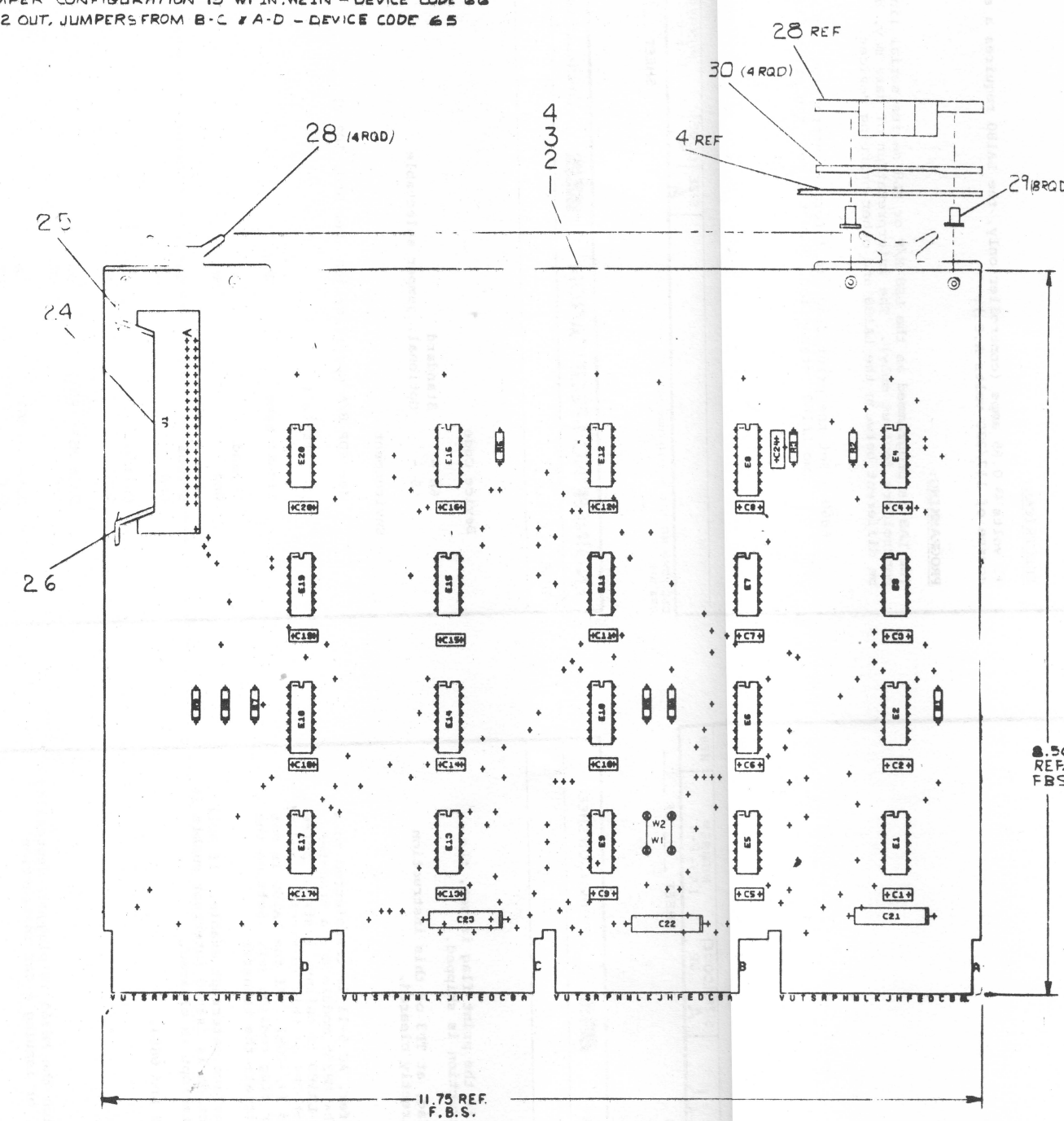
"THIS DRAWING AND SPECIFICATIONS HEREAFTER ARE THE PROPERTY OF DIGITAL EQUIPMENT CORPORATION AND SHALL NOT BE REPRODUCED OR COPIED IN WHOLE OR IN PART AS THE BASIS FOR THE MANUFACTURE OR SALE OF ITEMS WITHOUT WRITTEN PERMISSION OF DIGITAL EQUIPMENT CORPORATION."
 1975 DIGITAL EQUIPMENT CORPORATION

NOTES:
 1 STANDARD JUMPER CONFIGURATION IS WI, W2 IN - DEVICE CODE 66
 OPTION IS WI, W2 OUT, JUMPERS FROM B-C & A-D - DEVICE CODE 65

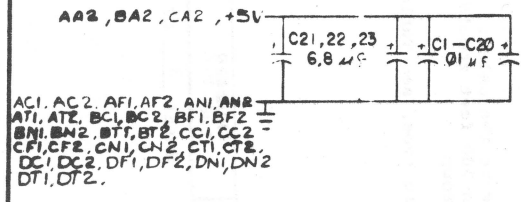
8 7 6 5 4 3 2 1

COMPONENT SUBSTITUTION CHART

PART CALLED FOR		SUBSTITUTE PART			
QTY	PART NO.	DESCR.	QTY	PART NO.	DESCR.
20	100610-01	0.01 WFDISC	20	100610-00	2.01 WFLASS
1	1909704	314	1	1910391	5314
1	190986	384	1	1910394	5384
1	1909486	384	1	1910393	7384
4	1911469	8640	4	1910392	5380
			4	1909971	6380
			4	1910390	7380
4	1911469	8640	4	1911115	11380
3	1909705	8881	3	1909973	97401



REF.	X Y COORDINATE HOLE LOCATION	K-CO-M8365-0-4	1
REF.	ASSY/DRILLING HOLE LAYOUT	D-AH-M8365-0-5	2
REF.	MODULE ECO HISTORY	B-MH-M8365-0-6	3
1	ETCHED CIRCUIT BOARD	501818	4
1	C24 CAP, 100PF 100V, 5%	1000016	5
20	C1 THRU C20 CAP, 0.1UF 50V, 20%	1001610-01	6
3	C21, C22, C23 CAP, 6.8UF 35V 10%	1005306	7
2	R5, R8 RES 150 1/4W 5%	1300250	8
2	R4, R7 RES 330 1/4W 5%	1300295	9
4	R1, R2, R6, R9 RES 1K 1/4W 5%	1300365	10
1	R3 RES 4.7K 1/4W 5%	1300447	11
2	E3 E4 DEC IC 7474	1905547	12
1	E20 DEC IC 7400	1905575	13
1	E12 DEC IC 7402	1909004	14
1	E10 DEC IC 384	1909486	15
2	E2 E19 DEC IC 7404	1909686	16
1	E1 DEC IC 314	1909704	17
3	E7, E11 E15 DEC IC 6881	1909705	18
1	E18 DEC IC 7442	1910046	19
1	E16 DEC IC 7404	1910155	20
1	E8 DEC IC 74123	1910436	21
2	E6 E14 DEC IC 74175	1910651	22
4	E5, E9, E13, E17 DEC IC 8640	1911469	23
1	J1 CONN 40 PIN RT ANGLE HEADER	1209941-02	24
1	LATCH L H	1209941-03	25
1	LATCH R H	1209941-04	26
4	SPLIT LUGS	9006735	27
4	HANDLE FLIP CHIP	9008337-06	28
8	EYELET	9006732	29
4	SPACER (CABLE CLAMP)	1208704	30
4	WI, W2 WIRE, 22 AWG, SOLID	310756-01	31



IC TYPE	QND	+5V
74123	8	16
74175	8	16
7442	8	16
314	1	8
8640	1	8
384	1	8
IC TYPE	QND	+5V

QND AND QV ARE USUALLY PIN 7 AND 14
 RESPECTIVELY UNLESS OTHERWISE NOTED ABOVE

IC PIN LOCATIONS

FIRST USED ON OPTION MODEL
 LA-8

ETCH BOARD REV. B

PARTS LIST

DATE 27/2/76
 DRAWN BY [Signature]
 CHECKED BY [Signature]
 DATE 18/01/75
 DATE 18/01/75
 DATE 18/01/75

LA180 INTERFACE

B-00-PDP-8/E

SCALE 1 OF 2

SEMICONDUCTOR CONVERSION CHART

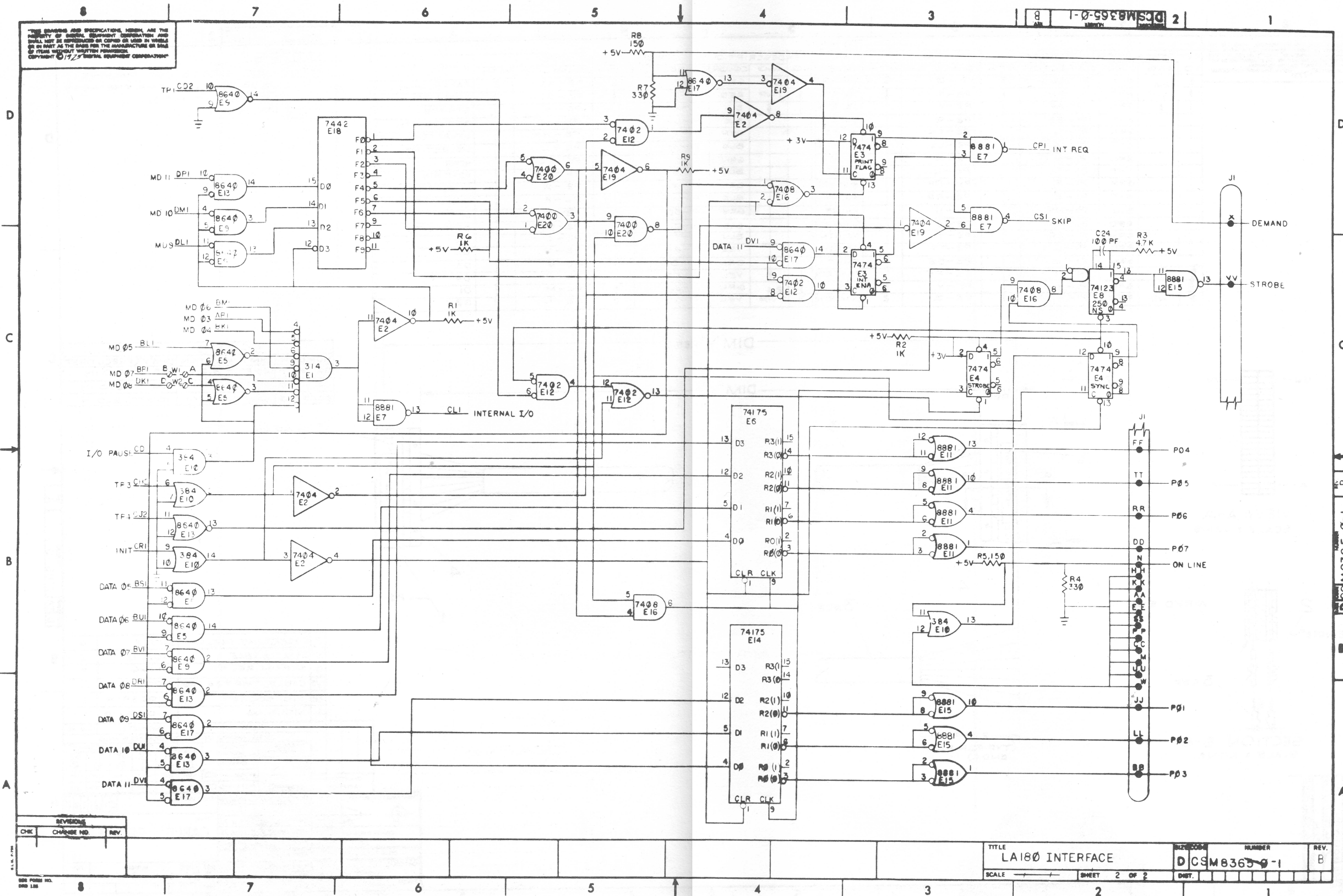
DEC NO. EIA NO. DEC NO. EIA NO.

ORIGINATED BY [Signature]
 CHECKED BY [Signature]
 DATE 24-JUN-76
 M8365-00001

CS M8365-0-1

THE DRAWING AND SPECIFICATIONS HEREIN ARE THE PROPERTY OF SEWAL EQUIPMENT CORPORATION AND SHALL NOT BE REPRODUCED OR COPIED OR USED IN WHOLE OR IN PART AS THE BASIS FOR THE MANUFACTURE OR SALE OF ITEMS WITHOUT WRITTEN PERMISSION. COPYRIGHT © 1975 SEWAL EQUIPMENT CORPORATION

DCSM8365-0-1 2



CHK	CHANGE NO	REV

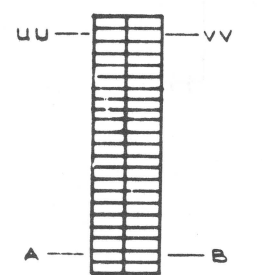
TITLE LA180 INTERFACE NUMBER DCSM8365-0-1 REV. B
SCALE SHEET 2 OF 2

THIS DRAWING AND SPECIFICATIONS HEREIN ARE THE PROPERTY OF DIGITAL EQUIPMENT CORPORATION AND SHALL NOT BE REPRODUCED OR COPIED OR USED IN WHOLE OR IN PART AS THE BASIS FOR THE MANUFACTURE OR SALE OF ITEMS WITHOUT WRITTEN PERMISSION. COPYRIGHT © 1975 DIGITAL EQUIPMENT CORPORATION

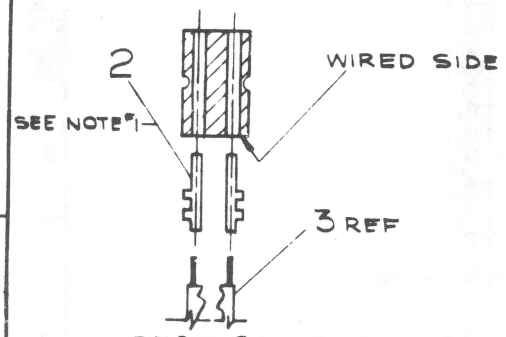
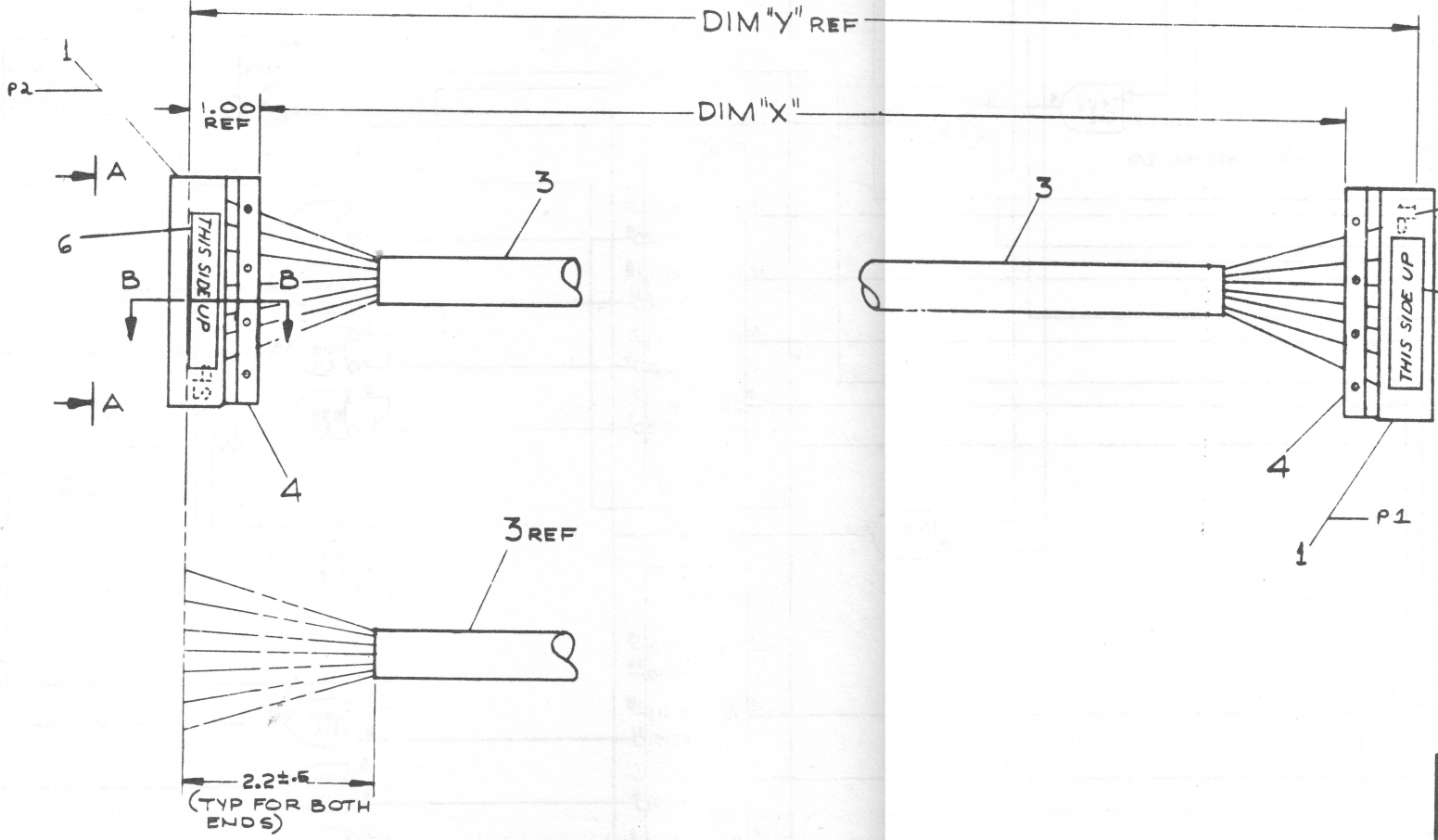
WIRE TABLE																
ITEM NO	DESCRIPTION	FROM	TO	SIGNAL NAME	ITEM NO	DESCRIPTION	FROM	TO	SIGNAL NAME							
	AWG	COLOR	CONNECTION WITH	CONNECTION WITH		AWG	COLOR	CONNECTION WITH	CONNECTION WITH							
3	24	BLU	PI-SS	2	P2-D	2	DB RTN	3	24	GRV	PI-V	2	P2-AA	2	PAPER GND	
	TWP	VHT	PI-PP		P2-F		D6 RTN		TWP	RED	PI-U		P2-BB		PAPER RTN	
		GRN	PI-AA		P2-V		D3 RTN			BLU	PI-VV		P2-A		STROBE	
		VHT	PI-EE		P2-R		D4 RTN			BLK	PI-UU		P2-B		STROBE RTN	
		GRN	PI-L		P2-KK		* +5			ORN	PI-N		P2-HH		SELECT (ONLINE)	
		VHT	PI-K		P2-LL		* RTN			BLK	PI-M		P2-JJ		SELECT RTN	
		BRN	PI-HH		P2-N		D RTN			GRN	PI-T		P2-CC		HDWR	
		VHT	PI-KK		P2-L		D2 RTN			BLK	PI-S		P2-DD		HDWR RTN	
		GRY	PI-F		P2-PP		*SEE NOTE 2			BRN	PI-Z		P2-W		*SEE NOTE 2	
		VHT	PI-E		P2-RR		*SEE NOTE 2			BLK	PI-Y		P2-X		*SEE NOTE 2	
		BLU	PI-NN		P2-H		PRIME			GRY	PI-DD		P2-S		D7	
		RED	PI-MM		P2-J		PRIMER TN			BLK	PI-D		P2-SS		DB (PARITY)	
		GRN	PI-CC		P2-T		D7 RTN			BLU	PI-TT		P2-C		D5	
		RED	PI-C		P2-TT		D8 RTN			YEL	PI-RP		P2-E		D6	
		GRN	PI-R		P2-EE		FAULT			ORN	PI-BB		P2-U		D3	
		RED	PI-D		P2-FF		FAULT RTN			YEL	PI-FF		P2-P		D4	
		BRN	PI-X		P2-Y		DEM			GRN	PI-JJ		P2-M		D1	
	24	RED	PI-W	2	P2-Z	2	DEM RTN		3	TWP	YEL	PI-LL	2	P2-K	2	D2

NOTES:
 1. MFG. SHOULD USE MACHINE CRIMPING TOOL FOR THE ASSEMBLY OF PINS (ITEM # 2)
 2. UNUSED CONN

LEGEND		
NUMBER	DIM "Y" VARIATION	DIM "Y" (PRECUT) REF
BC11S-25	25 FT. ± 3.01%	25 FT. 2.0 IN
BC11S-50	50 FT. ± 2.0%	50 FT. 2.0 IN
BC11S-100	100 FT. ± 2.0%	100 FT. 2.0 IN



VIEW A-A
SCALE: NONE



SECTION B-B
SCALE: NONE

DESCRIPTION	DWG./PART NO.	ITEM NO.
2 STICKER THIS SIDE UP	3611567	6
2 CABLE LABEL	9008473	5
2 STRAIN RELIEF	1211166	4
1/C CABLE, TWP #24 AWG	9107700-00	3
72 PIN SOCKET	1210089-4	2
2 HOUSING	1210918-13	1

THIRD ANGLE PROJECTION	DRWG. DATE: 10/26/75	FIRST USED ON	digital
REMOVE BURRS AND BREAK SHARP CORNERS	CHKD: [Signature]	TITLE	CABLE, PRINTER
DO NOT SCALE DWG	ENGL: [Signature]	SIZE	DIA
MATERIAL	PROD: [Signature]	CODE	BC11S-0-0
FINISH		NUMBER	A
		SCALE	
		SHEET	1 OF 1
		DIST.	

DRAWING DIRECTORY

"THIS DRAWING AND SPECIFICATIONS, HEREIN, ARE THE PROPERTY OF DIGITAL EQUIPMENT CORPORATION AND SHALL NOT BE REPRODUCED OR COPIED OR USED IN WHOLE OR IN PART AS THE BASIS FOR THE MANUFACTURE OR SALE OF ITEMS WITHOUT WRITTEN PERMISSION. COPYRIGHT © 1975, DIGITAL EQUIPMENT CORPORATION"

CUSTOMER PRINT SET INDEX

SEQUENCE

77

77

DRAWING DIRECTORY
LA180 UNIT ASSEMBLY
LA180 UNIT PARTS LIST
LA180 LOGIC BOARD
LA180 POWER BOARD
L.E.D. BOARD ASSY
PHOTOTRANSISTOR BOARD
6LPI FORM CONTROL BOARD
INTERCONNECTION DRAWING
PACKAGING INSTRUCTIONS
CASTERS KIT
PAPER CATCHER
COMPRESSED PRINT OPTION

B-DD-LA180 (SHEET1)
E-UA-LA180-0-0
A-PL-LA180-0-0
D-CS-5411023-0-1
D-CS-5411021-0-1
D-CS-5410991-0-1
D-CS-5411049-0-1
D-CS-5411653-0-1
D-IC-7011167-0-0
A-SP-3700131-0-0
B-DD-LAXX-KB
B-DD-LAXX-LD
B-DD-LAXX-KJ

THIS IS PRINT SET

UNIT VARIATIONS

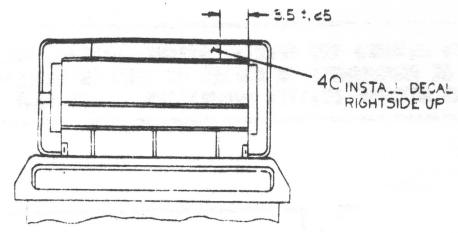
VAR	TITLE	PRINT SET		
		1	2	3
LA180-PA	LA180-PA 120V/ 60 HZ	x		
LA180-PB	LA180 PB 240V/ 60 HZ	x		
LA180-PC	LA180-PC 120V/ 50 HZ	x		
LA180-PD	LA180 PD 240V/ 50 HZ	x		
		x		
		x		
		x		

DATE	REV
2 75	B
5 75	C

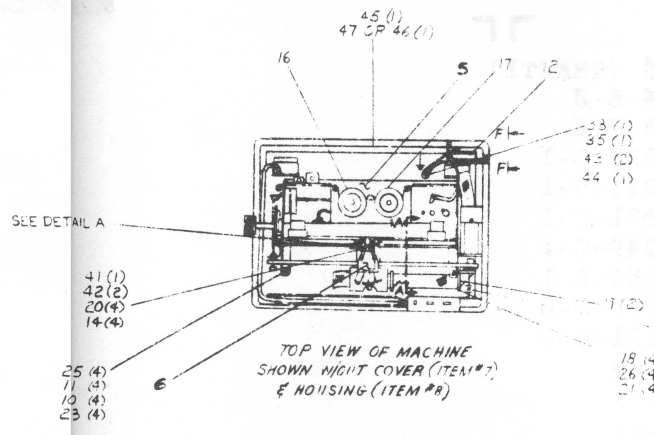
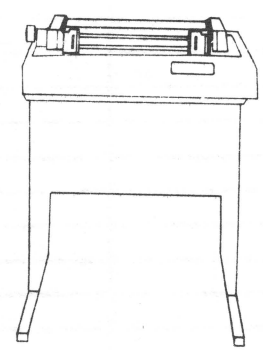
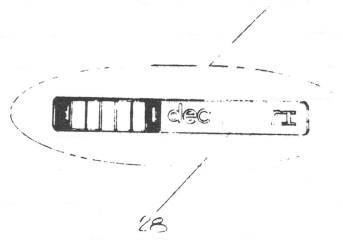
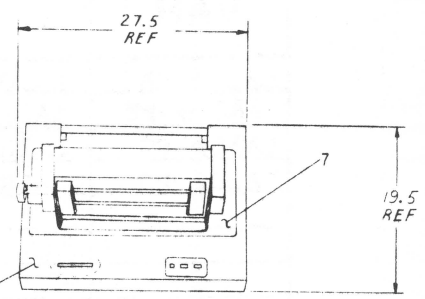
DATE	REV
A. TAYLOR 11/2/74	
A. TAYLOR 6/18/75	
J. STEWART 5/17/75	
J. STEWART 5/18/75	
T. MORGELLO 6/23/75	

TITLE DECRINTER DRAWING DERECTORY				
LA180-0				

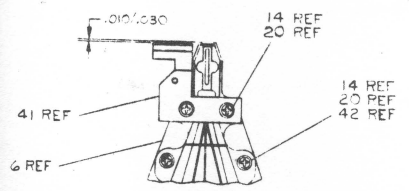
LA 180-000



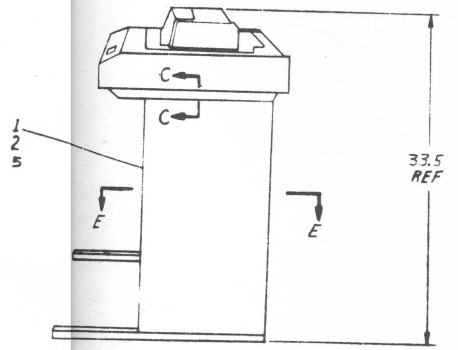
FRONT VIEW
COVER RAISED



TOP VIEW OF MACHINE
SHOWN WITH COVER (ITEM #7)
& HOUSING (ITEM #8)



DETAIL "A"
PRINT HEAD AND LINE INDICATOR
SCALE FULL

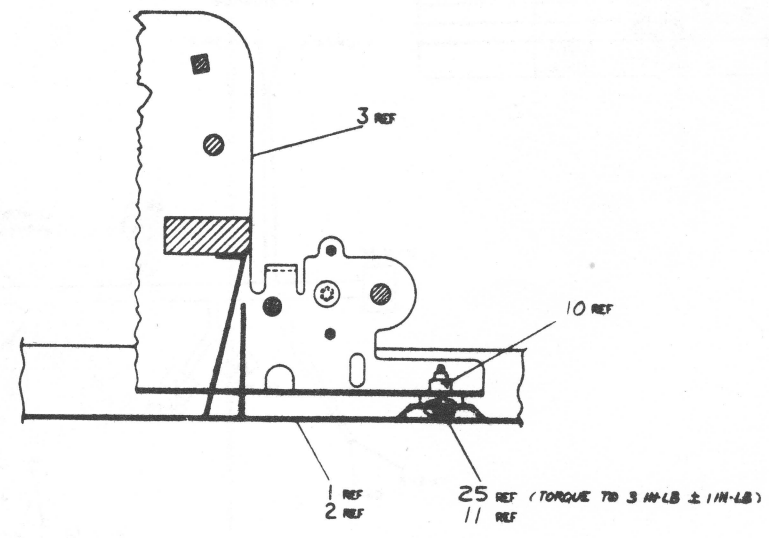


NOTES:
1. FOR PARTS LIST SEE DRAWING
A PL-LA 180-000
2. ITEMS # 32 (PLATE, INPUT CLAMP), # 33 (2
SCREWS), # 34 (2 LOCKWASHERS), # 35 (2 FLAT-
WASHERS) AND # 36 (2 TRAIN RELIEF) ARE TO BE
SHIPPED LOOSE WITH UNIT.

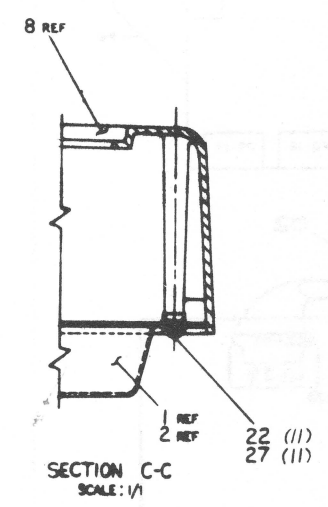
REV.	DESCRIPTION	DATE	BY	CHKD.	APP'D.	PART NO.
1	LA 180	20-03-00				LA 180
1	LA 180 UNIT ASSY					LA 180-000

REV.	DESCRIPTION	DATE	BY	CHKD.	APP'D.	PART NO.
1	LA 180 UNIT ASSY					LA 180-000

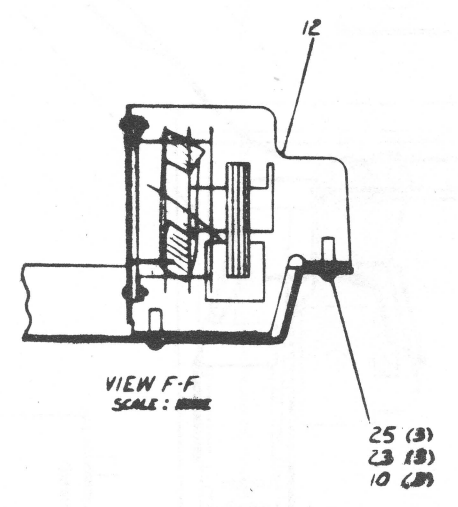
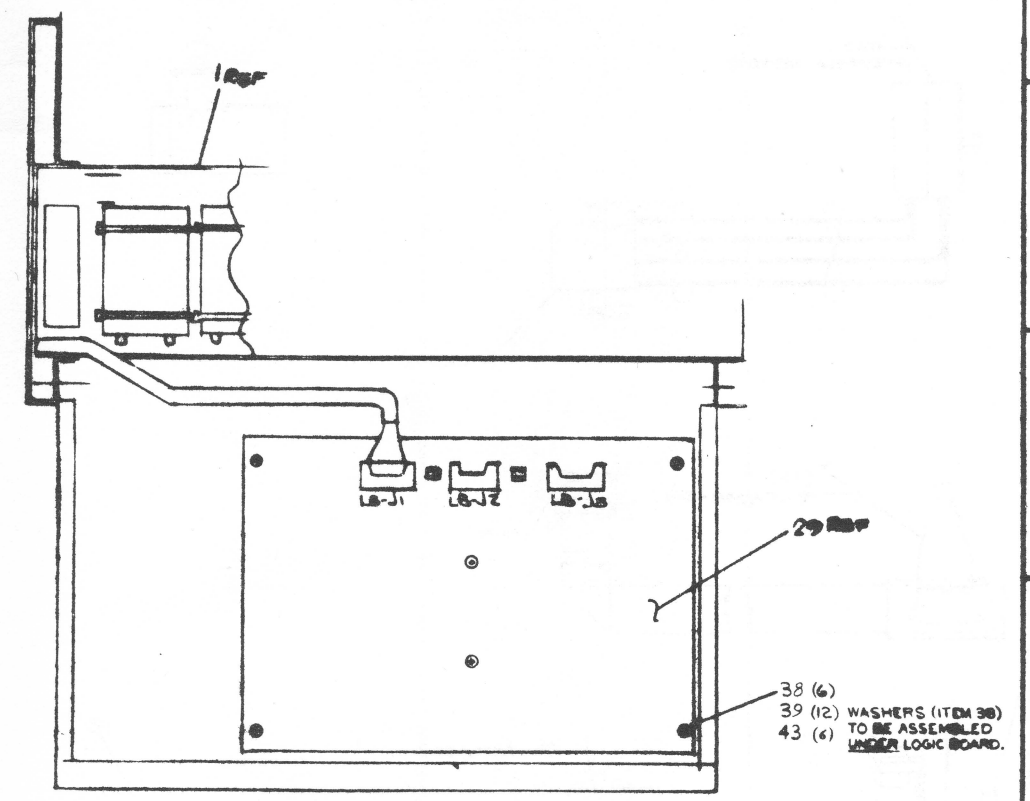
LA 180-000



SECTION A-A
SCALE: 1/1

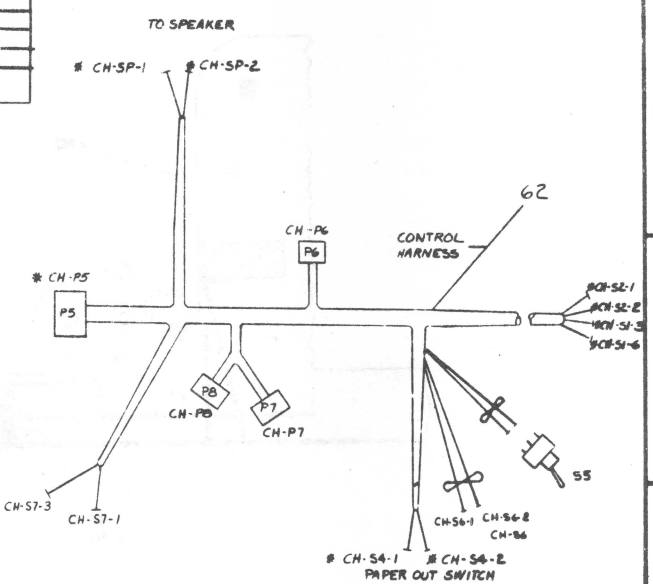


SECTION C-C
SCALE: 1/1

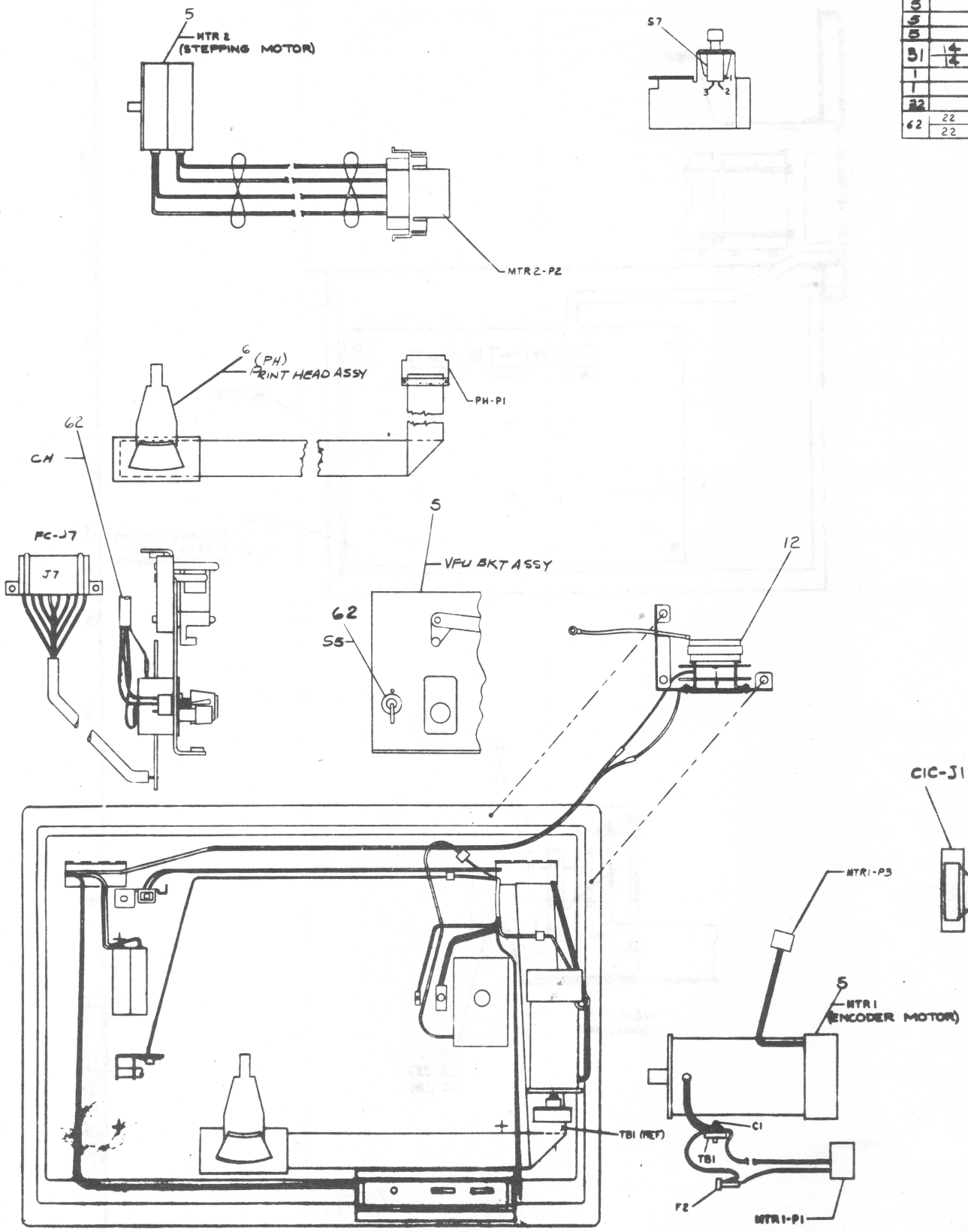
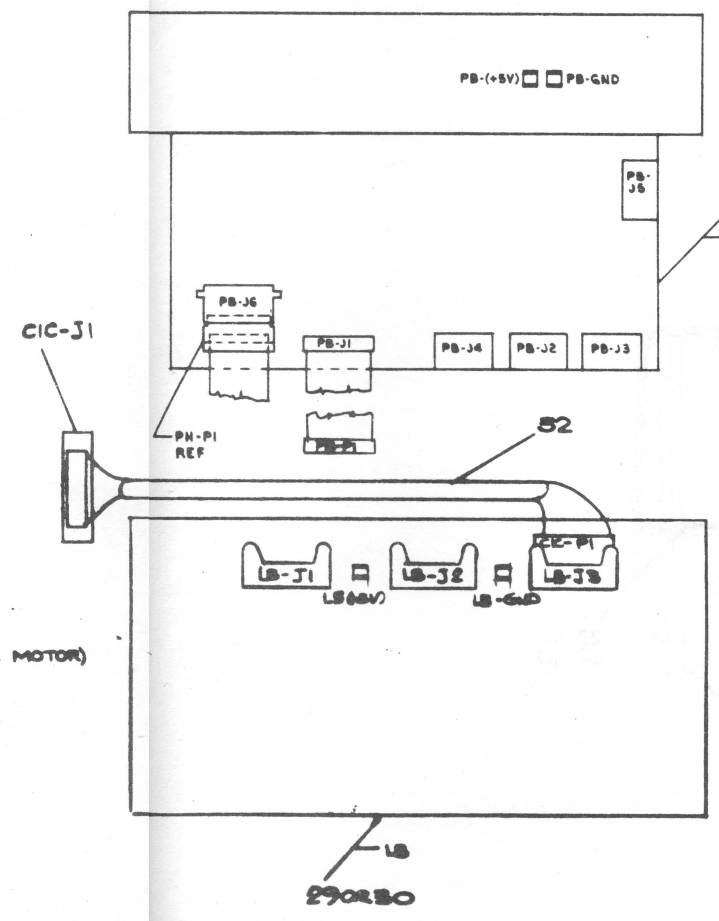


VIEW F-F
SCALE: 1/1

WIRE TABLE							
ITEM NO	DESCRIPTION		FROM		TO		REMARKS
	AWG	COLOR	CONN	TERM	CONN	TERM	
5			MTR2-P2		PB-J5		
62			CH-P7		PC-J7		
62			CH-S6-1		S6-1	TOP	
62			CH-S6-2		S6-3	SET	
5			MTR1-P3		CH-P6		
5			PH-P1		PB-J6		
5			MTR1-P1		PB-J4		
5			GRND	REF. ASSY GND	ORBIT GND		SEE SAFETY
31	14	BLK	PB (+5V)		LB-PV		
1	14	RED	PB GND		LB GND		
1			PB-P1		OR		
1			CH-P5		LB-J1		
22			CIC-P1		LB-J5		
62	22	GREY	CH-S7-1		S7-1	INTER-	
62	22	GREY	CH-S7-3		S7-3	LOCK	



NOTE: (*) ASTERISKS INDICATE HARNESS CONNECTIONS MADE AT NEXT LOWER LEVEL ASSY.



CABLE ROUTING DIAGRAM

DIGITAL EQUIPMENT CORPORATION MAYNARD, MASSACHUSETTS				QUANTITY / VARIATION					
PARTS LIST				LA180-PA	LA180-PB	LA180-PC	LA180-PD		
MADE BY	L. TAYLOR	CHECKED	DATE 6-17-75	SECTION 1					
DATE	10/4/74	DATE	6/17/75	ISSUED SECT. 1					
ENG	L. TAYLOR	PROD	R.L. JODOIN						
DATE	6-17-75	DATE	6/18/75						
ITEM NO.	DWG NO. / PART NO.	DESCRIPTION							
1	E-AD-7010094-1-0	CABINET ASSY W/POWER SUPPLY(115V) 60HZ		1	-	-	-		
2	E-AD-7010094-2-0	CABINET ASSY W/POWER SUPPLY(230V) 60HZ		-	1	-	-		
3	E-AD-7010094-3-0	CABINET ASSY W/POWER SUPPLY(115V) 60HZ		-	-	1	-		
4	E-AD-7010094-4-0	CABINET ASSY W/POWER SUPPLY(230V) 50HZ		-	-	-	1		
5	E-AD-7010091-0-0	PRINTER MECHANISM ASSY		1	1	1	1		
6	D-AD-7009882-0-0	PRINT HEAD ASSY		1	1	1	1		
7	D-IA-7010758-0-0	COVER ASSY		1	1	1	1		
8	E-IA-7010757-0-0	HOUSING ASSY		1	1	1	1		
9	1202704-00	CLAMP, CABLE		2	2	2	2		
10	9008896-00	WELLNUT #10-32		7	7	7	7		
11	9007906-00	WASHER, SPLIT LOCK, #10		4	4	4	4		
12	C-AD-7010756-0-0	FAN ASSY 115V, MOTOR		1	1	1	1		
13	9007649-00	WASHER, EXT TOOTH LOCK, #6		1	1	1	1		
14	9006633-00	WASHER, INTERNAL TOOTH LOCK #6		4	4	4	4		
15	A-MD-7412103-0-0	PKG. OF PAPER (100 SHEETS)		1	1	1	1		
16	3612153-00	RIBBON SPOOL W/RIBBON		1	1	1	1		
17	1212008-00	RIBBON SPOOL (EMPTY)		1	1	1	1		
18	9006011-1	SCREW, PHL, PAN HD, #4-40 x .38L		4	4	4	4		
19	9006077-1	SCREW, PHL, PAN HD, #6-32 x .38L		1	1	1	1		
20	9007793-1	SCREW, PHL, PAN HD, #6-32 x .56L		4	4	4	4		
21	9006557-00	NUT, KEPS, #4-40		4	4	4	4		
22	9009630-01	SCREW, PHL, PAN HD, #6-18 x .50, SELF TH		11	11	11	11		
TITLE LA180 UNIT ASSY				ASSY NO.	SIZE CODE	NUMBER		REV.	ECO NO.
				E-UA-LA180-0-0	A PL	LA180-0-0		F	LAI-2-00047
				SHEET 1 OF 3	DIST.				

DEC FORM DEC 16 (325)-1031-N870
DRA 110

DIGITAL EQUIPMENT CORPORATION MAYNARD, MASSACHUSETTS				QUANTITY / VARIATION					
PARTS LIST				LA180-PA	LA180-PB	LA180-PC	LA180-PD		
MADE BY	DICK VENO	CHECKED	DATE 6-17-75	SECTION 1					
DATE	3/25/74	DATE	6/17/75	ISSUED SECT. 1					
ENG	L. TAYLOR	PROD	R.L. JODOIN						
DATE	6-17-75	DATE	6/18/75						
ITEM NO.	DWG NO. / PART NO.	DESCRIPTION							
23	9006664-00	WASHER, FLAT, #10		7	7	7	7		
24	9007801-00	WASHER, SPLIT LOCK, #8		1	1	1	1		
25	9008955-1	SCREW, PHL PAN HD, #10-32 x .96L		7	7	7	7		
26	9006658-00	WASHER, FLAT, #4		4	4	4	4		
27	9006653-00	WASHER, FLAT, #6		15	15	15	15		
28	C-PS-3612451-0-0	NAME PLATE		1	1	1	1		
29	D-CS-5411023-0-1	LOGIC BOARD LA180		1	1	1	1		
30	D-CS-5411023-1A-1	LOGIC BOARD LA180 C/C		-	-	-	-		
31	D-IA-7010758-0-0	C/C INTERFACE CABLE ASSY		-	-	-	-		
32	C-MD-7413216-0-0	PLATE, INPUT CLAMP		1	1	1	1		
33	9006037-1	SCR PHL PAN HD 8-32 x .38		3	3	3	3		
34	9006090-00	WASHER SPLIT LOCK #8		2	2	2	2		
35	9006660-00	WASHER FLAT #8		4	4	4	4		
36	9008509-00	STRAIN RELIEF		1	1	1	1		
37	A-SP-3700131-0-0	PACKAGING INSTRUCTIONS		REF	REF	REF	REF		
38	9008208-1	SCR PAN HD NYLON 8-32x.50		6	6	6	6		
39	9006708	WASHER NYLON .37 OD x J9.1D x D32 THK		12	12	12	12		
40	A-DC-7416178-0-0	DECAL LA180		1	1	1	1		
41	C-MD-7414853-0-0	LINE INDICATOR		1	1	1	1		
42	9006636	WASHER FLAT		2	2	2	2		
43	9008072-00	EXTERNAL TOOTH LOCK WASHER #8		8	8	8	8		
44	3612680-00	DECAL, GROUND SYMBOL		2	2	2	2		
TITLE LA180 UNIT ASSY				ASSY NO.	SIZE CODE	NUMBER		REV.	ECO NO.
				E-UA-LA180-0-0	A PL	LA180-0-0		F	
				SHEET 2 OF 3	DIST.				

DEC FORM DEC 16 (325)-1031-N870
DRA 110

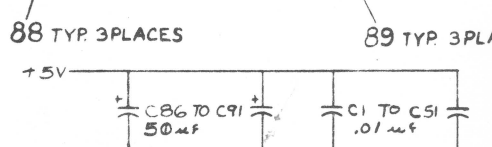
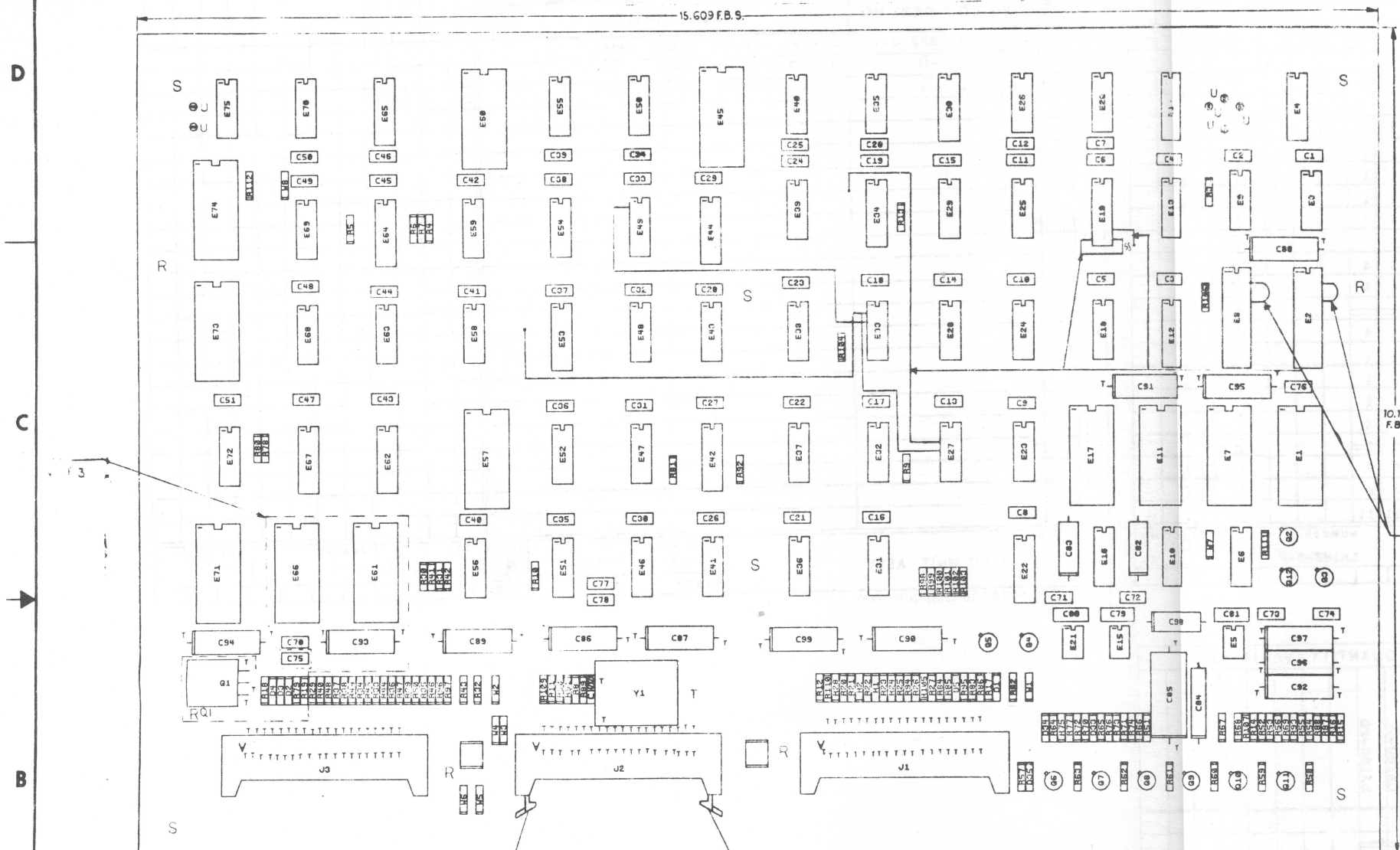
DIGITAL EQUIPMENT CORPORATION MAYNARD, MASSACHUSETTS				QUANTITY / VARIATION					
PARTS LIST				LA180-PA	LA180-PB	LA180-PC	LA180-PD		
MADE BY	L. TAYLOR	CHECKED	STELTZER	SECTION 1					
DATE	10-4-74	DATE	6-17-75	ISSUED SECT. 1					
ENG	STELTZER	PROD	R.L. JODOIN						
DATE	6-17-75	DATE	6-18-75						
ITEM NO.	DWG NO. / PART NO.	DESCRIPTION							
45	A-DC-7414832-0-1	SERIAL NUMBER DECAL LA180		1	1	1	1		
46	7413231-0-0	UNDERWRITERS LABEL 115V		1	1	1	1		
47	7413231-1-0	UNDERWRITERS LABEL 30V		1	1	1	1		
TITLE LA180 UNIT ASSY				ASSY NO.	SIZE CODE	NUMBER		REV.	ECO NO.
				E-UA-L180-0-0	A PL	LA180-0-0		F	
				SHEET 3 OF 3	DIST.				

DEC FORM DEC 16 (325)-1031-N870
DRA 110

"THIS DRAWING AND SPECIFICATIONS HEREIN ARE THE PROPERTY OF DIGITAL EQUIPMENT CORPORATION AND SHALL NOT BE REPRODUCED OR COPIED OR USED IN WHOLE OR IN PART AS THE BASIS FOR THE MANUFACTURE OR SALE OF ITEMS WITHOUT WRITTEN PERMISSION. COPYRIGHT © 1975 DIGITAL EQUIPMENT CORPORATION"

NOTES:

- NOTE 1. W2-W7 ARE NOT INSERTED
 2. JUMPER WIRES ADDED - 8 PLACES
 E2-18 TO E2-19
 E8-18 TO E8-19
 3. COMPONENTS WITHIN OUTLINE WERE USED ONLY WHEN PROMS WERE USED ON SERIAL #11300 AND EARLIER.



74175	8	16			
74161	8	16			
74123	8	16			
7489	8	16			
74150	12	24			
74130	8	16			
7442	8	16			
74193	8	16			
74154	12	24			
2101-2	8	22			
8640	1	8			
7493A	10	5			
1702A			12,22,23		16,24
LM301A			7	4	
2627	12	24			
2626	12	24			
IC TYPE	GRD	+5V	+12V	-12V	-9V

QND AND BV ARE USUALLY PIN 7 AND 14 RESPECTIVELY EXCEPTIONS ARE STATED ABOVE

IC PIN LOCATIONS

88 TYP. 3PLACES 89 TYP. 3PLACES

SEE SHEET #2

QTY	REF. DESIGNATION	DESCRIPTION	PART NO.	ITEM NO.
	LA180	ETCH BOARD REV. E		

PARTS LIST

DRN: J. EGGETT DATE: 3-18-75
 CHKD: J. EGGETT DATE: 3-18-75
 ENR: C. HANDEL DATE: 3-18-75
 PROJ. ENG: J. WILLIAMS DATE: 3-18-75
 PROJ. MGR: J. WILLIAMS DATE: 3-18-75

TITLE: LA 180 LOGIC BOARD

REV. CHANGE NO. DATE

SCALE: 1:1

SHEET 1 OF 2

SEMICONDUCTOR CONVERSION CHART

REV.	DESCRIPTION	DATE	BY
1	LA 180	1-28-75	A. WILLIAMS
2	LA 180	2-18-75	A. WILLIAMS
3	LA 180	3-18-75	A. WILLIAMS
4	LA 180	3-18-75	A. WILLIAMS
5	LA 180	3-18-75	A. WILLIAMS
6	LA 180	3-18-75	A. WILLIAMS
7	LA 180	3-18-75	A. WILLIAMS
8	LA 180	3-18-75	A. WILLIAMS
9	LA 180	3-18-75	A. WILLIAMS
10	LA 180	3-18-75	A. WILLIAMS

DCS 5411023-0-1 P

THIS DRAWING AND SPECIFICATIONS HEREIN ARE THE PROPERTY OF DIGITAL EQUIPMENT CORPORATION AND SHALL NOT BE REPRODUCED OR COPIED OR USED IN WHOLE OR IN PART AS THE BASIS FOR THE MANUFACTURE OR SALE OF ITEMS WITHOUT WRITTEN PERMISSION. COPYRIGHT © 1974, DIGITAL EQUIPMENT CORPORATION.

PARTS LIST

Table with columns: QTY, REF DESIGNATION, DESCRIPTION, PART NO, ITEM NO. Rows include components like X-Y COORDINATE HOLE LOCATION, CAP 39pF 100V 5%, RES 150 1/4W 5%, I.C. 7400, etc.

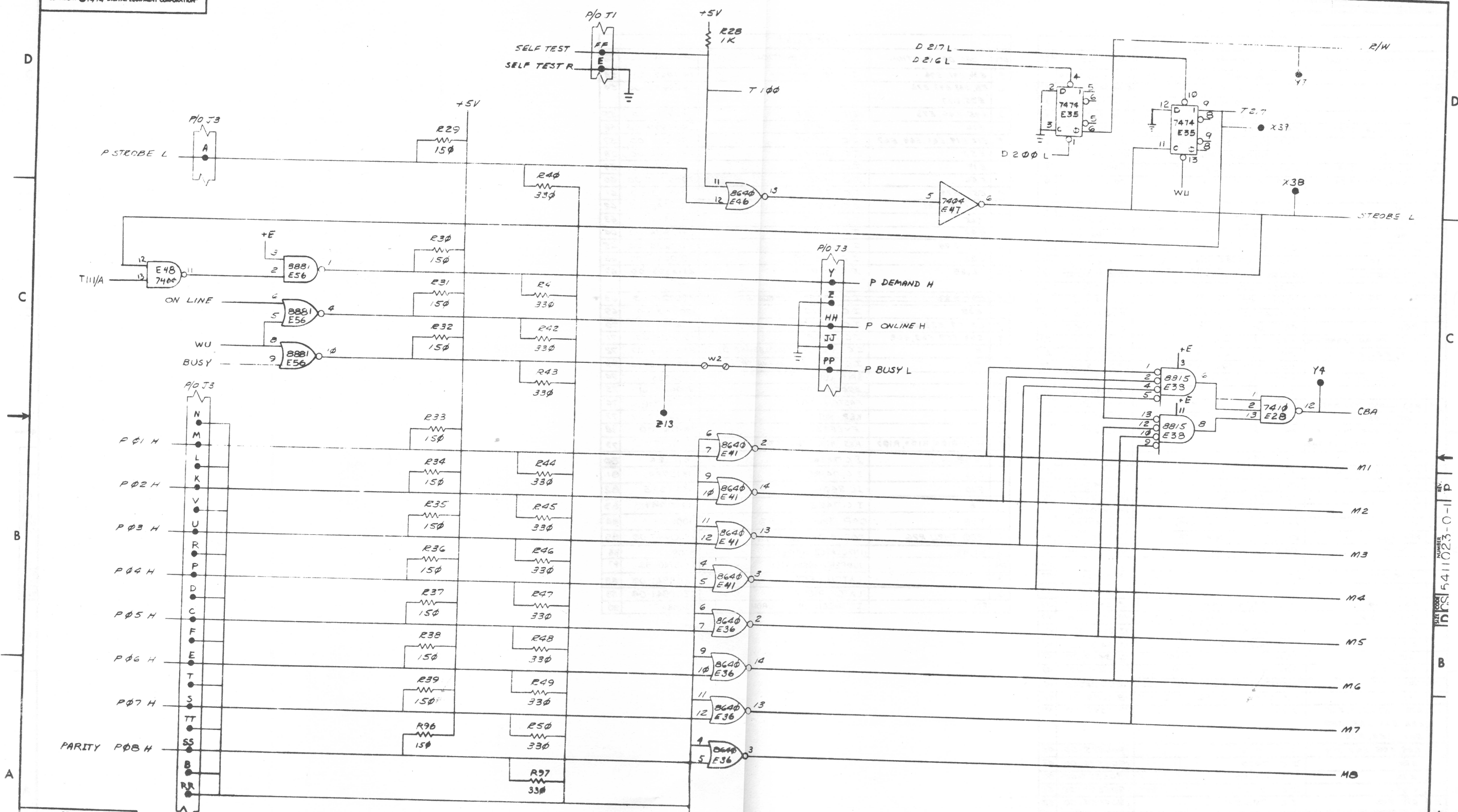
PARTS LIST

Table with columns: QTY, REF DESIGNATION, DESCRIPTION, PART NO, ITEM NO. Rows include components like I.C. 8640, I.C. 7404, I.C. 74154, I.C. 7413, etc.

REVISIONS table with columns: CHK, CHANGE NO, REV.

THIS DRAWING AND SPECIFICATIONS HEREIN ARE THE PROPERTY OF DIGITAL EQUIPMENT CORPORATION AND SHALL NOT BE REPRODUCED OR COPIED OR USED IN WHOLE OR IN PART AS THE BASIS FOR THE MANUFACTURE OR SALE OF ITEMS WITHOUT WRITTEN PERMISSION. COPYRIGHT © 1974 DIGITAL EQUIPMENT CORPORATION

DCS 5411023-0-1 P 2



REVISIONS		
CHK	CHANGE NO.	REV.

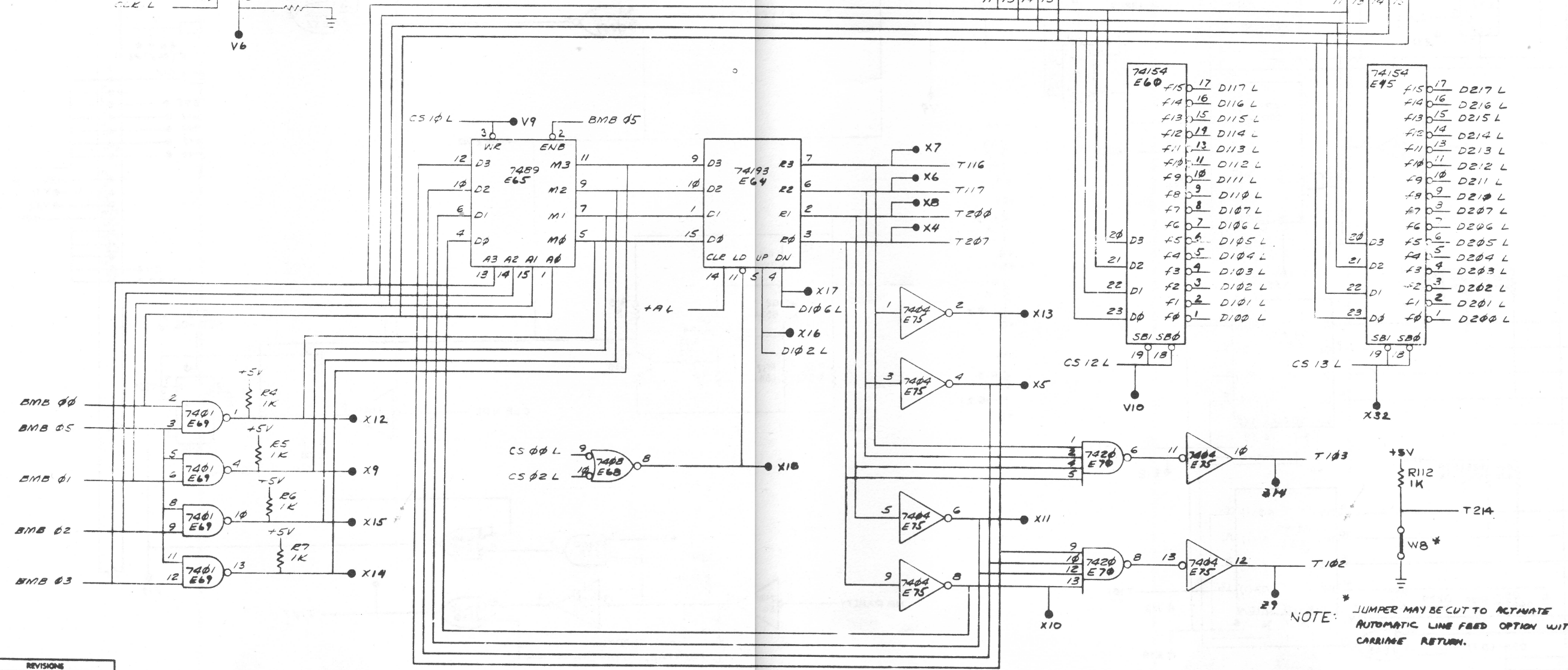
TITLE LA180 LOGIC BOARD
 SCALE SHEET 3 OF 9
 NUMBER DCS 5411023-0-1 P
 REV. P

THE DESIGN AND SPECIFICATIONS HEREIN ARE THE PROPERTY OF DIGITAL EQUIPMENT CORPORATION AND SHALL NOT BE REPRODUCED OR COPIED OR USED IN WHOLE OR IN PART AS THE BASIS FOR THE MANUFACTURE OR SALE OF ANY EQUIPMENT WITHOUT THE WRITTEN PERMISSION OF DIGITAL EQUIPMENT CORPORATION.

74154	E73	f15	17	CS 17 L
		f14	16	CS 16 L
		f13	15	CS 15 L
		f12	14	CS 14 L
		f11	13	CS 13 L
		f10	11	CS 12 L
		f9	10	CS 10 L
		f8	9	CS 10 L
		f7	8	CS 10 L
		f6	7	CS 10 L
		f5	6	CS 10 L
BMB 07	20	D3		
BMB 06	21	D2		
BMB 05	22	D1		
BMB 04	23	D0		
	5B	5A0		
	19	18		
		2B0		
		100		
		111		

BMB 06				
T117	16	D15		
T116	17	D14		
T114	18	D13		
T113	20	D12		
T112	21	D11		
T111	22	D10		
T110	23	D9		
T107	1	D8		
T106	2	D7		
T105	3	D6		
T104	4	D5		
T103	5	D4		
T102	6	D3		
T101	7	D2		
T100	8	D1		
	9	D0		
	5B	5A		
	51	50		
	11	13		
	14	15		

BMB 05				
T217	16	D15		
T216	17	D14		
T215	18	D13		
T214	19	D12		
T213	20	D11		
T212	21	D10		
T211	22	D9		
T210	23	D8		
T207	1	D7		
T206	2	D6		
T205	3	D5		
T204	4	D4		
T203	5	D3		
T202	6	D2		
T201	7	D1		
T200	8	D0		
	5B	5A		
	11	13		
	14	15		



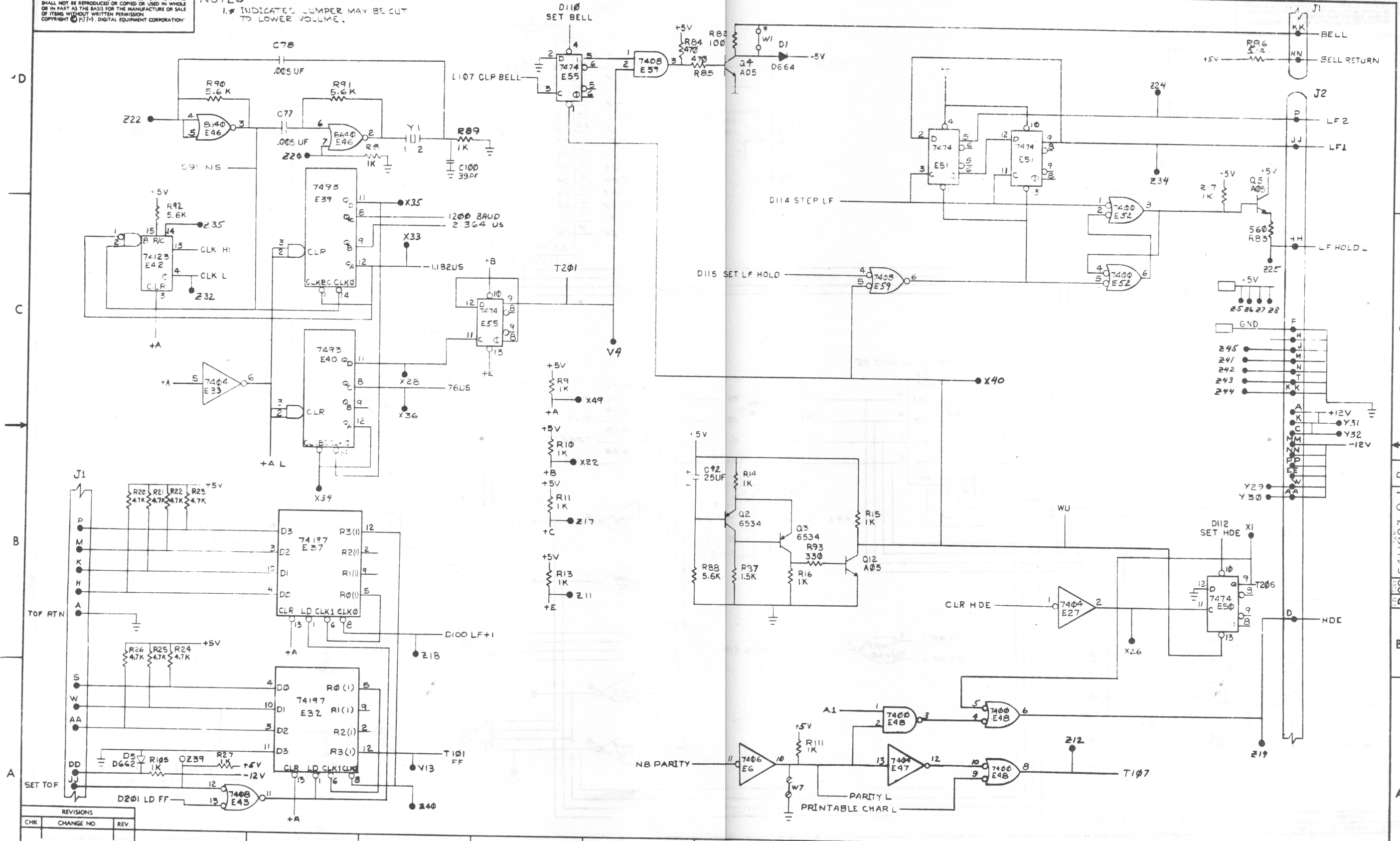
REVISIONS		
CHK	CHANGE NO.	REV

DCS 5411023-0-1 P 2

THIS DRAWING AND SPECIFICATIONS HEREIN ARE THE PROPERTY OF DIGITAL EQUIPMENT CORPORATION AND SHALL NOT BE REPRODUCED OR COPIED OR USED IN WHOLE OR IN PART AS THE BASIS FOR THE MANUFACTURE OR SALE OF ITEMS WITHOUT WRITTEN PERMISSION. COPYRIGHT © 1974, DIGITAL EQUIPMENT CORPORATION.

NOTES
 1. # INDICATES LUMPER MAY BE CUT TO LOWER VOLUME.

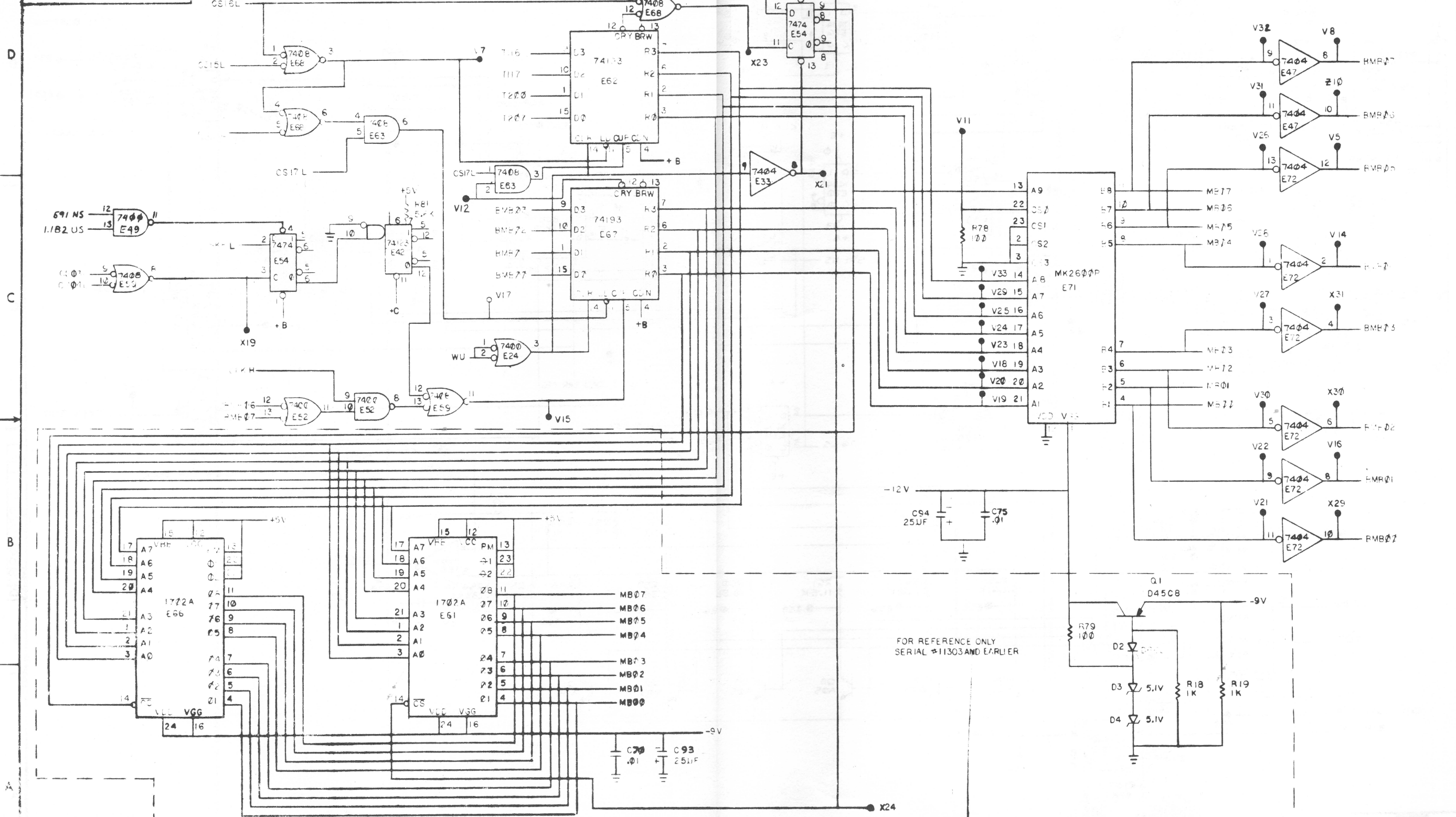
DCS 5411023-0-1



REVISIONS		
CHK	CHANGE NO	REV

TITLE LA 180 LOGIC BOARD
 SIZE CODE DCS 5411023-0-1
 NUMBER F
 SHEET 5 OF 9
 SCALE DIST.

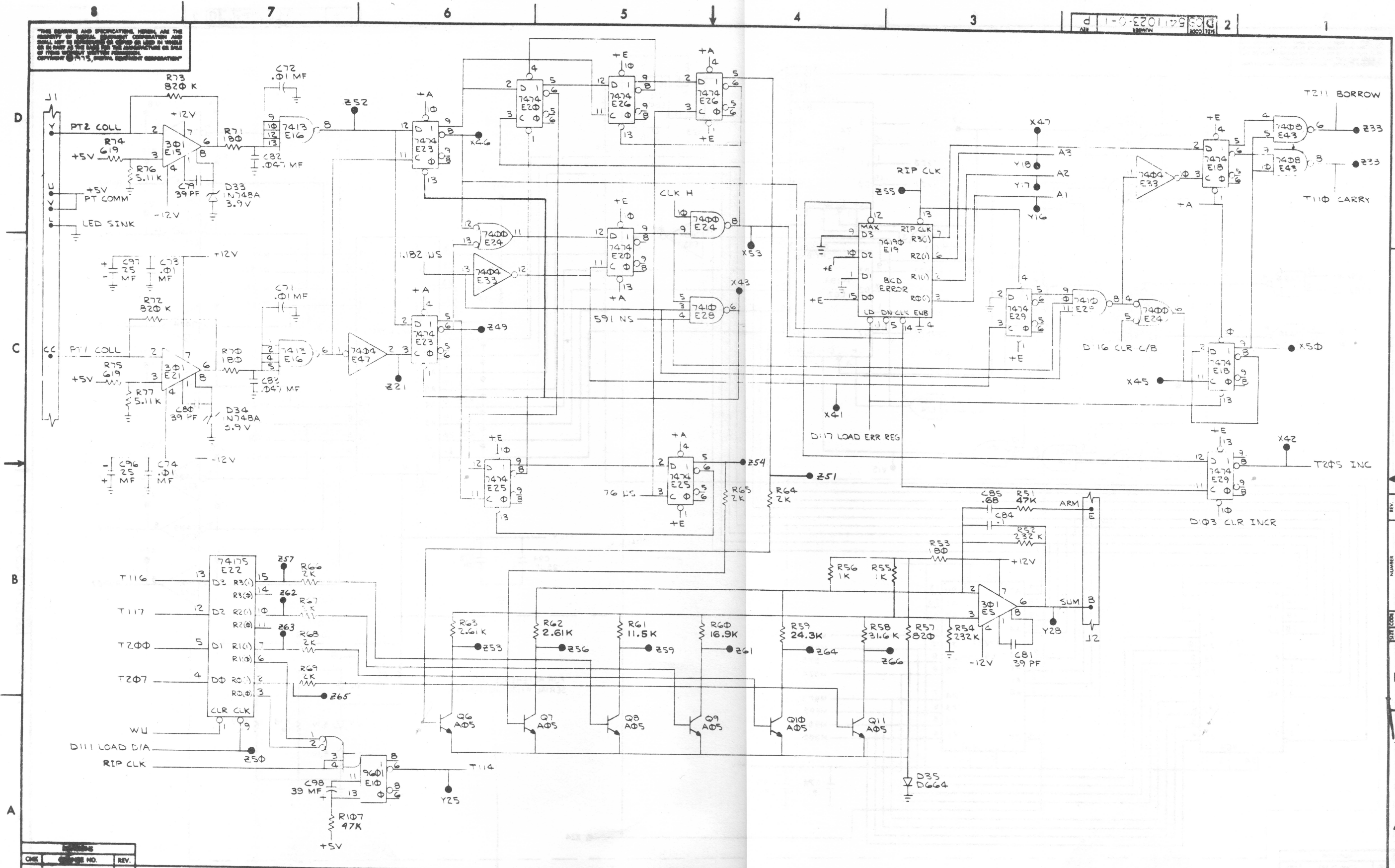
REVISIONS AND SPECIFICATIONS HEREIN ARE THE PROPERTY OF DIGITAL EQUIPMENT CORPORATION AND NO PART IS TO BE REPRODUCED OR COPIED IN WHOLE OR IN PART AS THE BASIS FOR THE MANUFACTURE OR SALE OF ANY EQUIPMENT WITHOUT WRITTEN PERMISSION FROM DIGITAL EQUIPMENT CORPORATION.



FOR REFERENCE ONLY SERIAL #11303 AND EARLIER

REVISIONS		
CHK	CHANGE NO	REV

THE DRAWING AND SPECIFICATIONS HEREIN ARE THE PROPERTY OF GENERAL ELECTRIC COMPANY AND SHALL NOT BE REPRODUCED OR COPIED IN WHOLE OR IN PART AS AN INSTRUMENT OR PART OF THE INSTRUMENT OR FOR THE PURPOSES OF REPRODUCING OR COPIING THEREFROM WITHOUT WRITTEN PERMISSION OF GENERAL ELECTRIC COMPANY.



REV.	DATE	BY

THIS DRAWING AND SPECIFICATIONS HEREIN ARE THE PROPERTY OF DIGITAL EQUIPMENT CORPORATION AND SHALL NOT BE REPRODUCED OR COPIED OR USED IN WHOLE OR IN PART AS THE BASIS FOR THE MANUFACTURE OR SALE OF ITEMS WITHOUT WRITTEN PERMISSION. COPYRIGHT © 1975, DIGITAL EQUIPMENT CORPORATION.

D E S I G N A T I O N
D C S 5411021-0-1 K

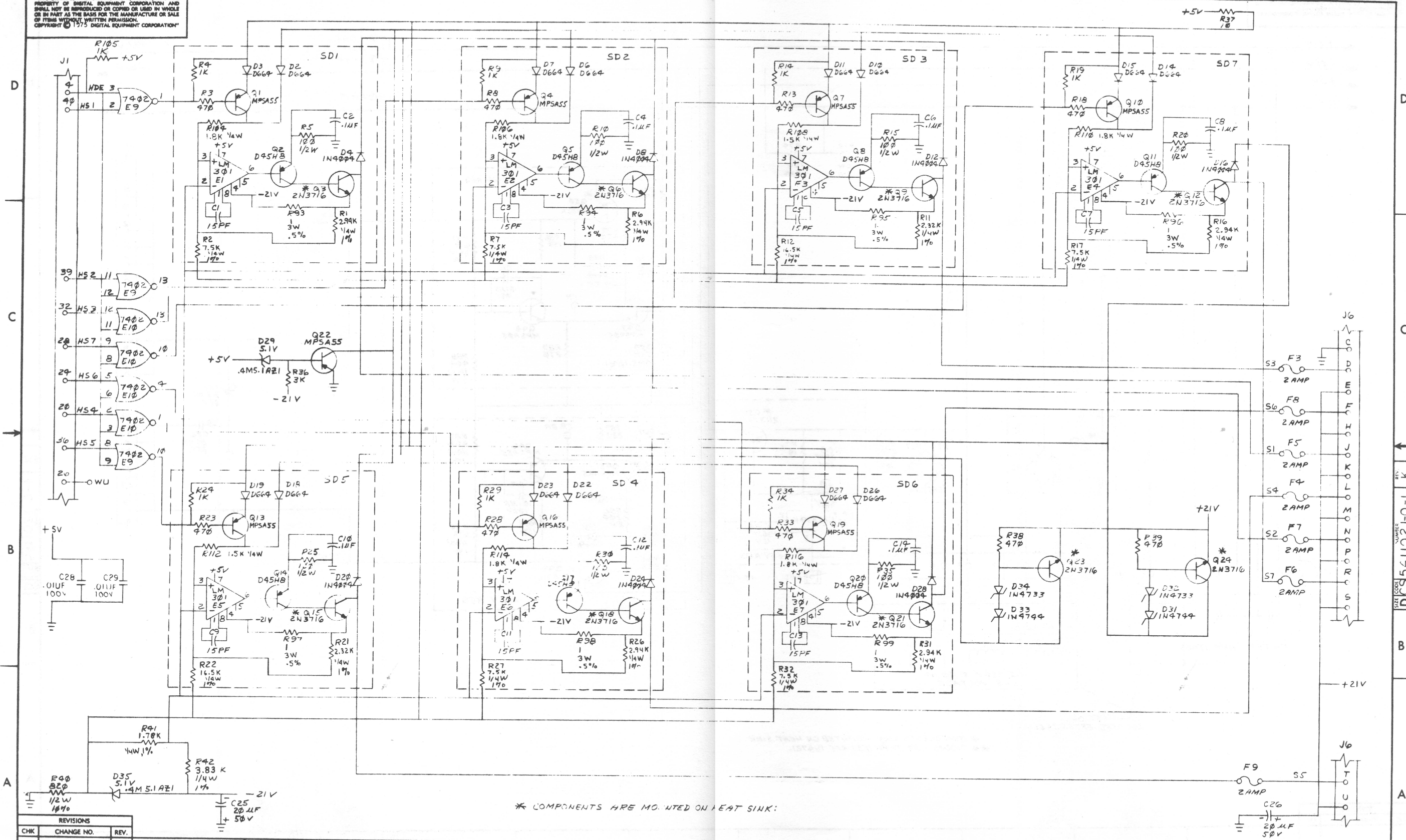
QTY	REF DESIGNATIONS	DESCRIPTION	PART NO	ITEM NO
REF		X-Y COORDINATE HOLE LOCATION	K-50-5411021-0-4	1
REF		ASYM DRILLING HOLE LAYOUT	E-AN-5411021-0-5	2
REF		MODULE ECO HISTORY	B-MH-5411021-0-6	3
1		ETCHED CIRCUIT BOARD	5011020	4
3	C18, C21, C22	CAP 25UF, 25V, 10% +75% HLEL	1002075-00	5
6	C16, C17, C28, C29-C31	CAP .01UF, 15V, 20% WLEC	1001610-01	6
1	C19	CAP .22UF, 15V, 10% MIL-STD	1002037-00	7
1	C20	CAP .19UF, 12V, 20% AL-EL	1009933-00	8
2	C25, C26	CAP .22UF, 5V, 10% +75% HLEL	1002839-00	9
1	C29	CAP .15UF, 35V, 10% MIL-STD	1002125-00	10
7	C13, C5, C7, C9, C11, C13	CAP .15UF, 100V, 5% D.M.	1002427-00	11
7	C2, C4, C6, C8, C10, C12, C14	CAP .1UF, 15V, 20% DIS	1002030-00	12
1	C23	CAP .33UF, 20V, 10% MIL-STD	1005328-00	13
22	D2, D3, D6, D7, D10, D11, D14, D15, D18, D19, D20, D27, D28, D29, D30, D31, D32, D33, D34, D35, D36, D37, D38, D39, D40, D41, D42, D43, D44, D45, D46, D47, D48, D49, D50, D51, D52, D53, D54, D55, D56, D57, D58, D59, D60, D61, D62	DIODE D266	1100119-00	14
2	D31, D33	DIODE IN4744	1105699-00	15
13	D9, D8, D12, D16, D20, D28, D29, D37, D47, D49, D53, D55, D57, D24	DIODE IN4004	1105796-00	16
4	D54 THRU D57	DIODE IN4721	1110182-00	17
1	D53	DIODE BRIDGE 21V	1110714-00	18
4	D29, D35, D59, D60	DIODE 4M 5.1A 21.5V, 1% ZENER	1105873-00	19
2	D32, D34	DIODE IN4733	1110488-00	20
1	D30	DIODE IN7804	1104860-00	21
2	D42, D48	DIODE IN798A	1100122-00	22
4		KEYING PLUG, MATE-N-LOK	1211595-00	23
4	J2, J3, J4, J5	CONN MATE-N-LOK 8 SKT	1209390-00	25
28		SOCKET P. MATE-N-LOK	1209456-01	26
2	R52, R60	RES 2K, 1/4W, 5%	1302388-00	27
1	R47	RES 39, 1/2W, 5%	1302336-00	28
7	R93 THRU R99	RES 1, 3W, 5% W.W.	1312547-00	29
4	R100 THRU R103	RES 4, 5W, 5% W.W.	1311624-00	30
1	R67	RES 100, 1/4W, 5%	1300229-00	31
1	R76	RES 18, 1/4W, 5%	1302124-00	32
2	R73, R74	RES 100, 10W, 5% W.W.	1310597-00	33
7	R5, R10, R15, R20, R25, R30, R35	RES 100, 1/2W, 5%	1300228-00	34
5	R44, R58, R92, R108, R12	RES 1.5K, 1/4W, 5%	1300391-00	35
1	R84	RES 220, 1/4W, 5%	1300271-00	36
2	R56, R64	RES 150, 2W, 5% W.W.	1305524-00	37
2	R55, R63	RES 150, 5W, 5% W.W.	1301898-00	38
1	R83	RES 270, 1/4W, 5%	1301972-00	39
1	R50	RES 390, 2W, 5%	1301864-00	40
1	R75	RES 270, 2W, 10%	1300288-00	41
1	R82	RES 300, 2W, 5%	1309855-00	42
2	R70, R81	RES 390, 1/4W, 5%	1300309-00	43
1	R79	RES 470, 2W, 5%	1303062-00	44
2	R85, R86	RES 150, 1/4W, 5%	1300250-00	45
2	R57, R59	RES 300, 1/2W, 5%	1300291-00	46
9	R43, R46, R9, R14, R19, R24, R29, R34, R105	RES 1K, 1/4W, 5%	1300365-00	47

QTY	REF DESIGNATIONS	DESCRIPTION	PART NO	ITEM NO
2	R45, R48	RES 500, 1W, 5%	1303048-00	48
3	R77, R80, R91	RES 5.1K, 1/4W, 5%	1300444-00	49
2	R92, R99	RES 9.7K, 1/4W, 5%	1302997-00	50
3	R53, R61, R66	RES 10K, 1/4W, 5%	1300479-00	51
2	R98, R99	RES 4.5K, 1/4W, 1%	1303047-00	52
2	R97, R99	RES 019, 1/4W, 1%	1305126-00	53
15	R3, R8, R13, R18, R23, R33, R38, R28, R39, R46, R49, R54, R57, R62, R65	RES 470, 1/4W, 5%	1300316-00	54
1	R40	RES 820, 1/2W, 10%	1300356-00	55
1	R30	RES 3K, 1/4W, 5%	1300932-00	56
5	R25, R7, R27, R32	RES 7.5K, 1/4W, 1%	1305322-00	57
1	R41	RES 1.78K, 1/4W, 1%	1302612-00	58
5	R1, R6, R16, R26, R31	RES 2.94K, 1/4W, 1%	1301981-00	59
1	R42	RES 3.83K, 1/4W, 1%	1309413-00	60
1	R1, R2	RES 2.32K, 1/4W, 1%	1312545-00	61
1	R3, R6, R9, R12, R15, R18, R21, R24, R27, R30, R33, R36, R39, R42, R45, R48, R51, R54, R57, R60, R63, R66, R69, R72, R75, R78, R81, R84, R87, R90, R93, R96, R99	TRANS 2N3716	1503069-00	62
2	R42, R43	TRANS 3715	1503068-00	63
1	R51	TRANS 2N3791	1509581-00	64
2	R39, R39	TRANS 6S31B	1509338-00	65
6	R26, R30, R34, R37, R40, R43, R46, R49, R52, R55, R58, R61, R64, R67, R70, R73, R76, R79, R82, R85, R88, R91, R94, R97, R100, R103, R106, R109, R112, R115, R118, R121, R124, R127, R130, R133, R136, R139, R142, R145, R148, R151, R154, R157, R160, R163, R166, R169, R172, R175, R178, R181, R184, R187, R190, R193, R196, R199	TRANS MPS A05	1510705-00	66
13	R37, R35, R1, R4, R7, R10, R13, R16, R19, R22, R25, R28, R31, R34, R37, R40, R43, R46, R49, R52, R55, R58, R61, R64, R67, R70, R73, R76, R79, R82, R85, R88, R91, R94, R97, R100, R103, R106, R109, R112, R115, R118, R121, R124, R127, R130, R133, R136, R139, R142, R145, R148, R151, R154, R157, R160, R163, R166, R169, R172, R175, R178, R181, R184, R187, R190, R193, R196, R199	TRANS MPS A55	1510706-00	67
5	R41, R28, R30, R49, R32	TRANS TIP31A	1512590-00	68
4	R40, R29, R31, R50	TRANS TIP32A	1512589-00	69
7	R2, R5, R8, R11, R14, R17, R20	TRANS D45H8	1510708-00	70
2	R9, R10	IC 7402	1909004-00	71
1	R8	IC LM309K REGULATOR	1910460-00	72
7	E1 THRU E7	IC LM3019 OP AMP	1910282-00	73
1	J6	H802 18 PIN (MODIFIED)	5510831-00	74
2		RIVET, POP	9006960-00	75
1		HEAT SINK	7413424-00	76
4		FUSE CLIP	9009513-01	77
8		WASHER (MATE-N-LOK STANDOFF)	9006693-00	78
8		EYELET	9006732-00	79
2	F1, F2	FUSE 3 AMP SLO BLO	9007218-00	80
2		FASTON TAB	9007113-00	81
2		EYELET	9009000-00	82
26		SCREW PPH 4-40X1/2	9006013-01	83
35		NUT, KEP 4-40	9006557-00	84
1		SCREW, PPH 6-32 X15/16	9007838-01	85
1		NUT, KEP 6-32	9006560-00	86
1		CABLE, POWER BOARD	6AD-7010363-1	87
13		INSULATOR, TD-3	9006721-00	88
9		INSULATOR	9009597-00	89
1		COMPOUND, THERMAL JOINT	9008268-00	90
6		SCREW PPH 4-40 X7/16	9006012-01	91
7	F3 THRU F9	FUSE, PICO, 2 AMP	1211751-00	92
1		LABEL	3611567-00	93
5	R104, R106, R110, R114, R116	RES 1.8K, 1/4W, 5%	1300398-00	94
2	R12, R27	RES 16.5K, 1/4W, 1%	1312546-00	95
14"	WIRE	WIRE AWG 14, GREEN	9107370-55	96
2	R10, R71	RES. 60, 10W, 5%	1312997	97

QTY	REF DESIGNATIONS	DESCRIPTION	PART NO	ITEM NO
1	R37	RES 10 1/4W, 5%	1301317-00	98
2	R117, R118	RES 100 1/4W, 5%	310981-00	99

REVISIONS		
CHK	CHANGE NO	REV

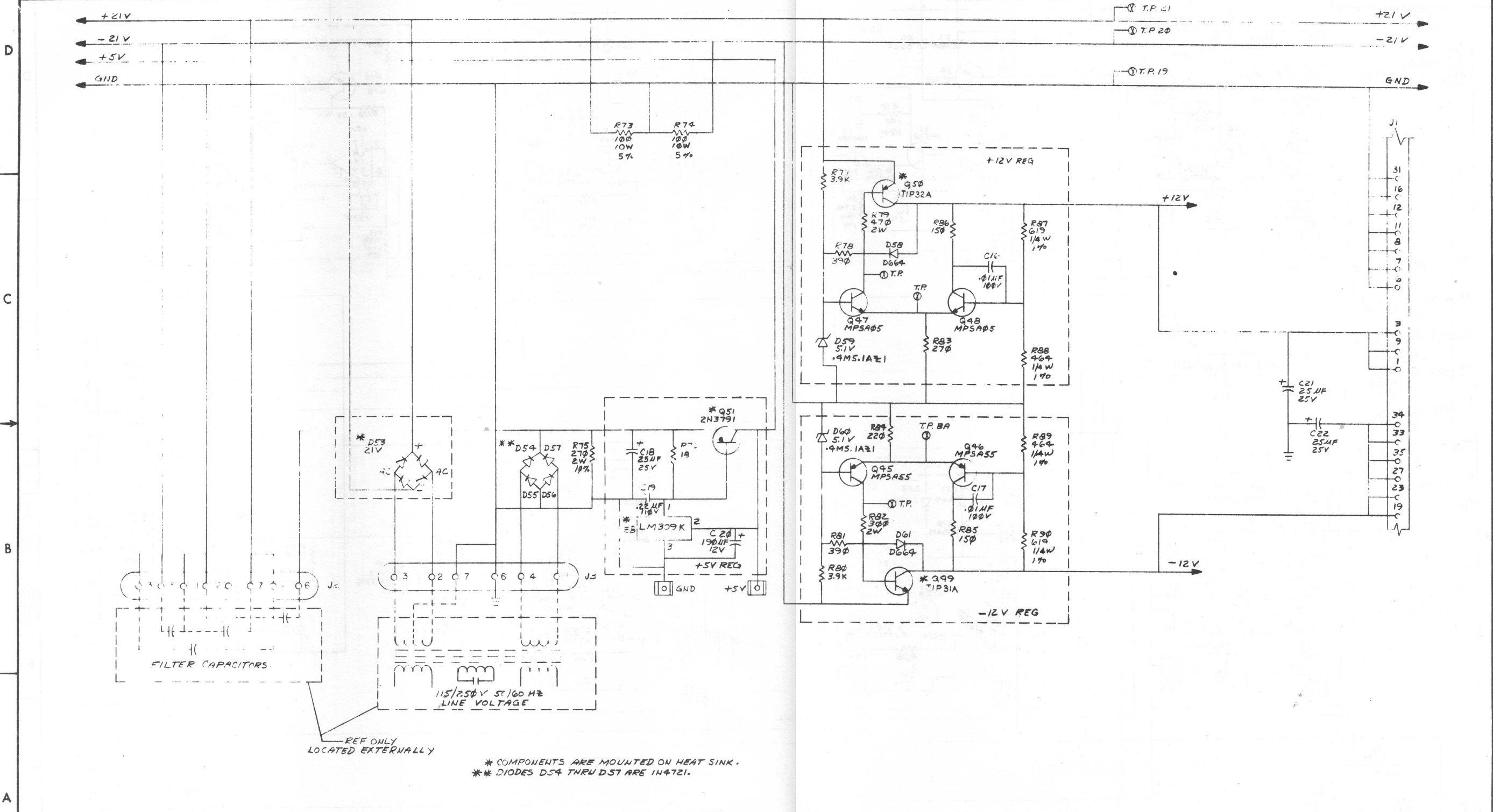
"THIS DRAWING AND SPECIFICATIONS, HEREIN, ARE THE PROPERTY OF DIGITAL EQUIPMENT CORPORATION AND SHALL NOT BE REPRODUCED OR COPIED OR USED IN WHOLE OR IN PART AS THE BASIS FOR THE MANUFACTURE OR SALE OF ITEMS WITHOUT WRITTEN PERMISSION. COPYRIGHT © 1975 DIGITAL EQUIPMENT CORPORATION"



* COMPONENTS ARE MOUNTED ON HEAT SINK:

CHK	CHANGE NO.	REV.

"THIS DRAWING AND SPECIFICATIONS HEREIN ARE THE PROPERTY OF DIGITAL EQUIPMENT CORPORATION AND SHALL NOT BE REPRODUCED OR COPIED OR USED IN WHOLE OR IN PART AS THE BASIS FOR THE MANUFACTURE OR SALE OF ITEMS WITHOUT WRITTEN PERMISSION. COPYRIGHT © 1975, DIGITAL EQUIPMENT CORPORATION"



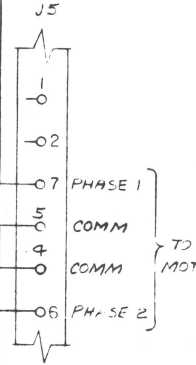
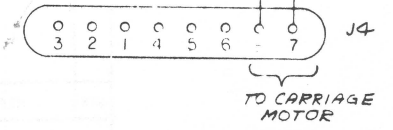
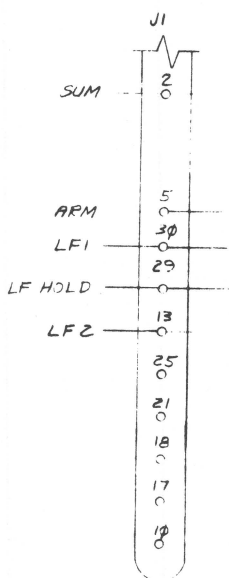
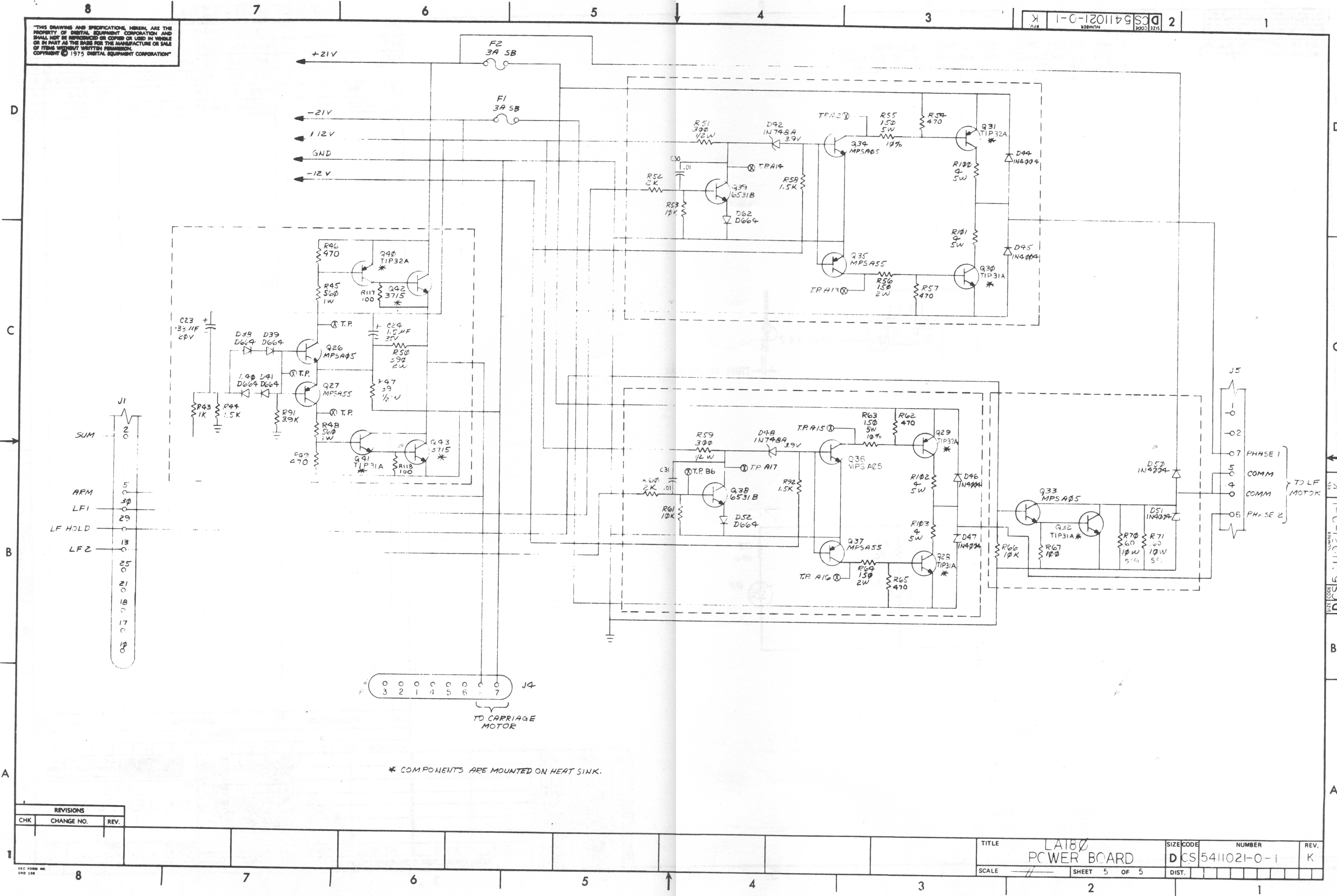
* COMPONENTS ARE MOUNTED ON HEAT SINK.
 ** DIODES D54 THRU D57 ARE 1N4721.

REVISIONS		
CHK	CHANGE NO.	REV.

TITLE	LAI80 POWER BOARD	SIZE CODE	NUMBER	REV.
SCALE	1/1	SHEET	4 OF 5	DIST.
DCS 5411021-0-1		K		K

"THIS DRAWING AND SPECIFICATIONS HEREIN ARE THE PROPERTY OF DIGITAL EQUIPMENT CORPORATION AND SHALL NOT BE REPRODUCED OR COPIED OR USED IN WHOLE OR IN PART AS THE BASIS FOR THE MANUFACTURE OR SALE OF ITEMS WITHOUT WRITTEN PERMISSION. COPYRIGHT © 1975 DIGITAL EQUIPMENT CORPORATION"

SIZE CODE NUMBER DCS 5411021-0-1 K 2



* COMPONENTS ARE MOUNTED ON HEAT SINK.

REVISIONS		
CHK	CHANGE NO.	REV.

TITLE	LAT80 POWER BOARD	SIZE CODE	D CS	NUMBER	5411021-0-1	REV.	K
SCALE		SHEET	5	OF	5	DIST.	

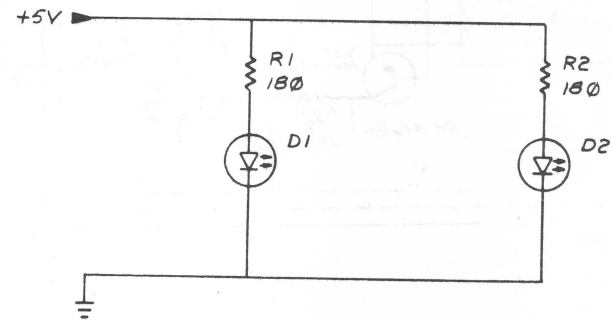
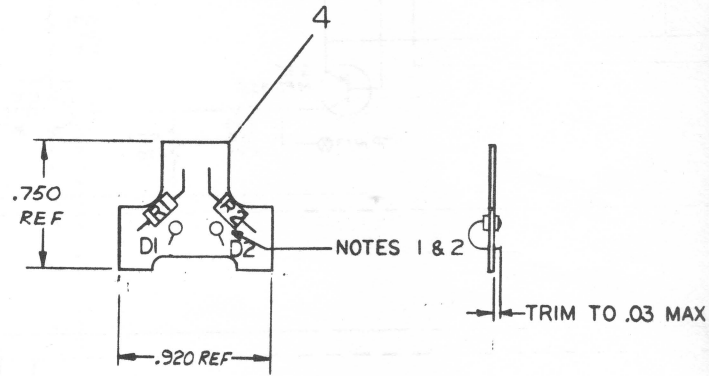
SIZE CODE NUMBER DCS 5411021-0-1 K

This drawing and specifications, herein, are the property of Digital Equipment Corporation and shall not be reproduced or copied or used in whole or in part as the basis for the manufacture or sale of items without written permission.

COPYRIGHT © 1974 DIGITAL EQUIPMENT CORPORATION

NOTES:

1. HEAT APPLIED TO D1 AND D2 DURING SOLDERING SHALL NOT EXCEED 285°C FOR A PERIOD OF 15 SECONDS.
2. FINISHED HOLE SIZE FOR MOUNTING D1 AND D2 SHALL BE .078 MIN. .083 MAX



REF	X-Y COORDINATE HOLE LOCATION	K-CO-5410991-0-4	1	
REF	ASSY/DRILLING HOLE LAYOUT	D-AH-5410991-0-5	2	
REF	MODULE ECO HISTORY	B-MH-5410991-0-6	3	
1	ETCHED CIRCUIT BOARD	D1A-5010990-0-0	4	
2	R1, R2	RES 180 1/4W 5%	1301322	5
2	D1, D2	LIGHT EMITTING DIODE	1111907	6

QTY	REF DESIGNATION	DESCRIPTION	PART NO.	ITEM NO.
-----	-----------------	-------------	----------	----------

ETCH BOARD REV				B
DATE	DATE	DATE	DATE	DATE
3/1/74	5/1/74	5-2-74	7-2-74	2-15-74
NEXT HIGHER ASSY		TITLE		
		LA36 ENCODER PC BOARD LED		
DEC NO.	EIA NO.	DEC NO.	EIA NO.	REV.
				G

11/1/73	J. BITTO	5410991-0002	C
2-0-74	C. BICKOFF	5410991-0001	B
2-5-75			

BRUNING 40-07 15848
DEC FORM NO DRD-135

REV C
NUMBER 5410991-0-1
SIZE CODE DCS

5410991-0-1

D
C
B
A

D
C
B
A

8 7 6 5 4 3

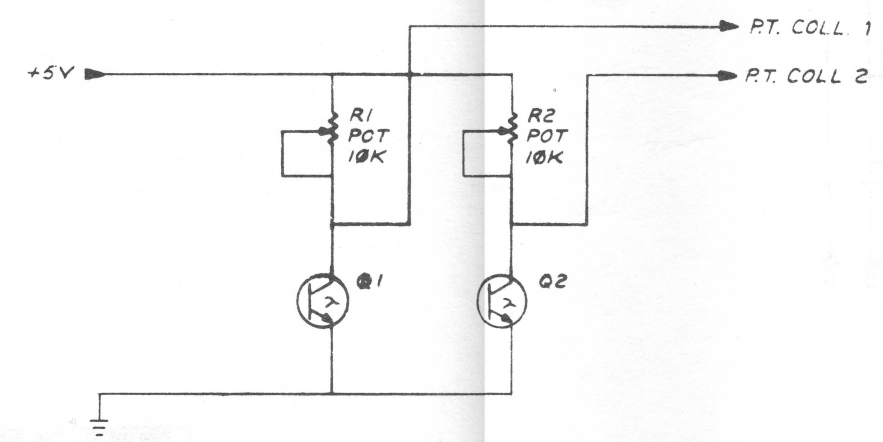
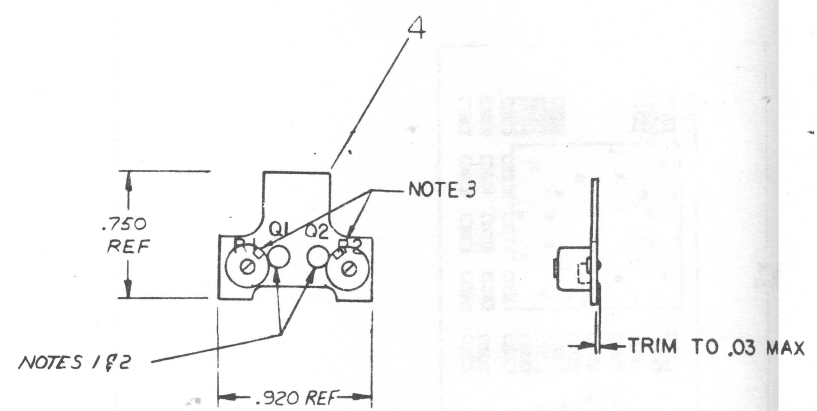
8 7 6 5 4 3

SCALE 1 OF 1
SHEET 1 OF 1
DST. DCS 5410991-0-1

SEMICONDUCTOR CONVERSION CHART

Copyright © 1974 DIGITAL EQUIPMENT CORPORATION

- NOTES:
1. HEAT APPLIED TO Q1 AND Q2 DURING SOLDERING SHALL NOT EXCEED 285° C FOR A PERIOD OF 15 SECONDS.
 2. FINISHED HOLE SIZE FOR MOUNTING Q1 AND Q2 SHALL BE .078 MIN., .083 MAX.
 3. R1 AND R2 MUST BE ORIENTED AS SHOWN, WITH NOTCH TOWARD CENTER OF BOARD.



REF	X-Y COORDINATE AND LOCATION	K-CO-5411049-0-1	1	
REF	ASSY/DRILLING HOLE LAYOUT	D-AH-5411049-0-5	2	
REF	MODULE ECO HISTORY	B-MH-5411049-0-6	3	
REF	ETCHED CIRCUIT BOARD	D-IA-5010770-0-0	4	
2	R1, R2	POTENTIOMETER 10K	1309150-12	5
2	Q1, Q2	PHOTOTRANSISTOR	1511906	6

QTY	REF DESIGNATION	DESCRIPTION	PART NO.	ITEM NO.
PARTS LIST				
ETCH BOARD REV B				
DRN		DATE	digital EQUIPMENT CORPORATION	
CHK'D		DATE	MAYNARD, MASSACHUSETTS	
ENG		DATE	TITLE	
PRD		DATE	LA36	
NEXT HIGHER ASSY		DATE	ENCODER PC BOARD	
		DATE	PHOTOTRANSISTOR	
SCALE		SHEET 1 OF 1		
DISTR.		DISTR.		

REV	CHANGE NO.	DATE
1	1	5-12-74
2	2	7-12-74
3	3	7-15-74

DEC NO.	EIA NO.	DEC NO.	EIA NO.

SEMICONDUCTOR CONVERSION CHART

8

7

6

5

4

3

2

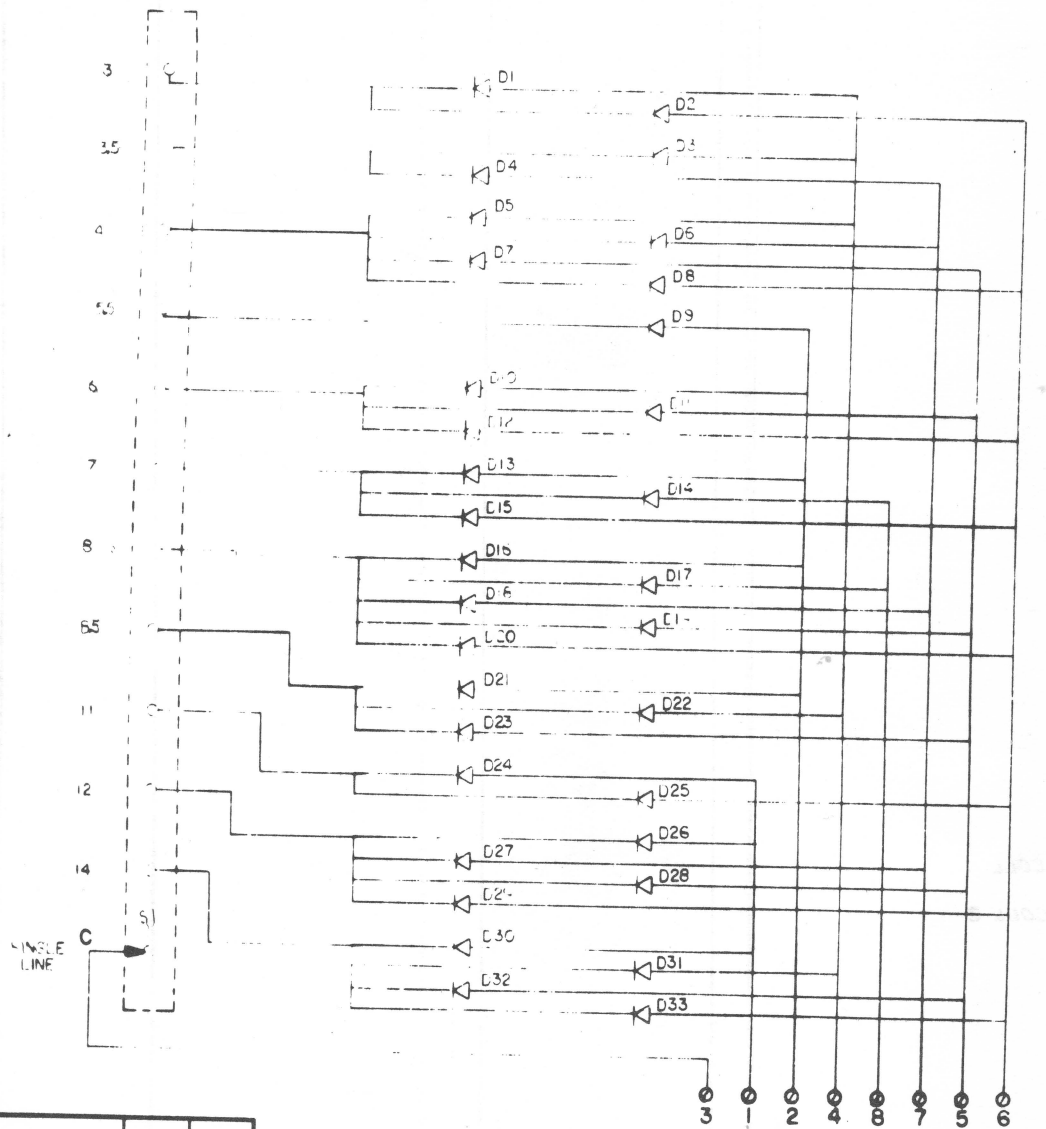
1

THIS DRAWING AND SPECIFICATIONS HEREIN ARE THE PROPERTY OF DIGITAL EQUIPMENT CORPORATION AND SHALL NOT BE REPRODUCED OR COPIED OR USED IN WHOLE OR IN PART AS THE BASIS FOR THE MANUFACTURE OR SALE OF ITEMS WITHOUT WRITTEN PERMIT. OR
 COPYRIGHT © 1975 DIGITAL EQUIPMENT CORPORATION

NOTES:

D

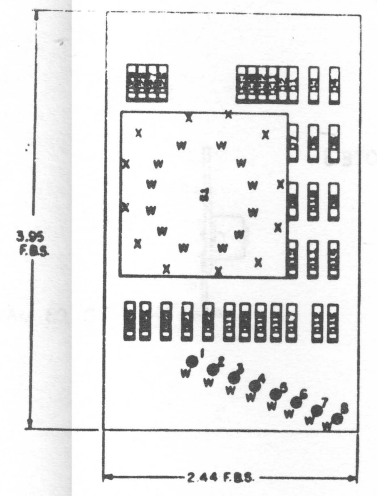
FORM SWITCH



C

B

A



QTY	REF. DESIGNATION	DESCRIPTION	PART NO.	ITEM NO.
8		SPLIT LUG	9006735-00	7
33	D1-D33	DIODE	1100114-00	8
1	S1	SWITCH SINGLE POLE 12 POSITION	1212443-00	5
1		ETCHED CIRCUIT BOARD	0105011653-00	4
REF		MODULE HISTORY	R M-5411653-0-0	3
REF		ALLOY DRILLING FILE 1/16" DIA	D-AH-5411653-0-5	
REF		MICRO DRILLING FILE LOCATION	1100-5411653-0-4	1

FIRST USED ON OPTION MODEL LA180		ETCH BOARD REV. A		PARTS LIST															
DRN.	DATE	<div style="text-align: center; border: 1px solid black; padding: 5px;"> digital </div> <p>TITLE: LA180 FORM SWITCH CONTROL</p>																	
CHK'D.	DATE																		
DATE	DATE																		
DATE	DATE																		
DATE	DATE																		
NEXT HIGHER ASSY		<table border="1"> <tr> <td>SEC. NO.</td> <td>EAU. NO.</td> <td>SEC. NO.</td> <td>EAU. NO.</td> <td>SIZE CODE D CS</td> <td>NUMBER 5411653-0-1</td> <td>REV. *</td> </tr> <tr> <td colspan="2">SEMICONDUCTOR CONVERSION CHART</td> <td colspan="2">SCALE NONE</td> <td>SHEET</td> <td>OF</td> <td></td> </tr> </table>				SEC. NO.	EAU. NO.	SEC. NO.	EAU. NO.	SIZE CODE D CS	NUMBER 5411653-0-1	REV. *	SEMICONDUCTOR CONVERSION CHART		SCALE NONE		SHEET	OF	
SEC. NO.	EAU. NO.	SEC. NO.	EAU. NO.	SIZE CODE D CS	NUMBER 5411653-0-1	REV. *													
SEMICONDUCTOR CONVERSION CHART		SCALE NONE		SHEET	OF														

IC TYPE	END	+BV					
END AND BV ARE USUALLY PIN 7 AND 14 RESPECTIVELY DESCRIPTIONS ARE STATED ABOVE							
IC PIN LOCATIONS							

REV *
5411653-0-1
D CS

8

7

6

5

4

3

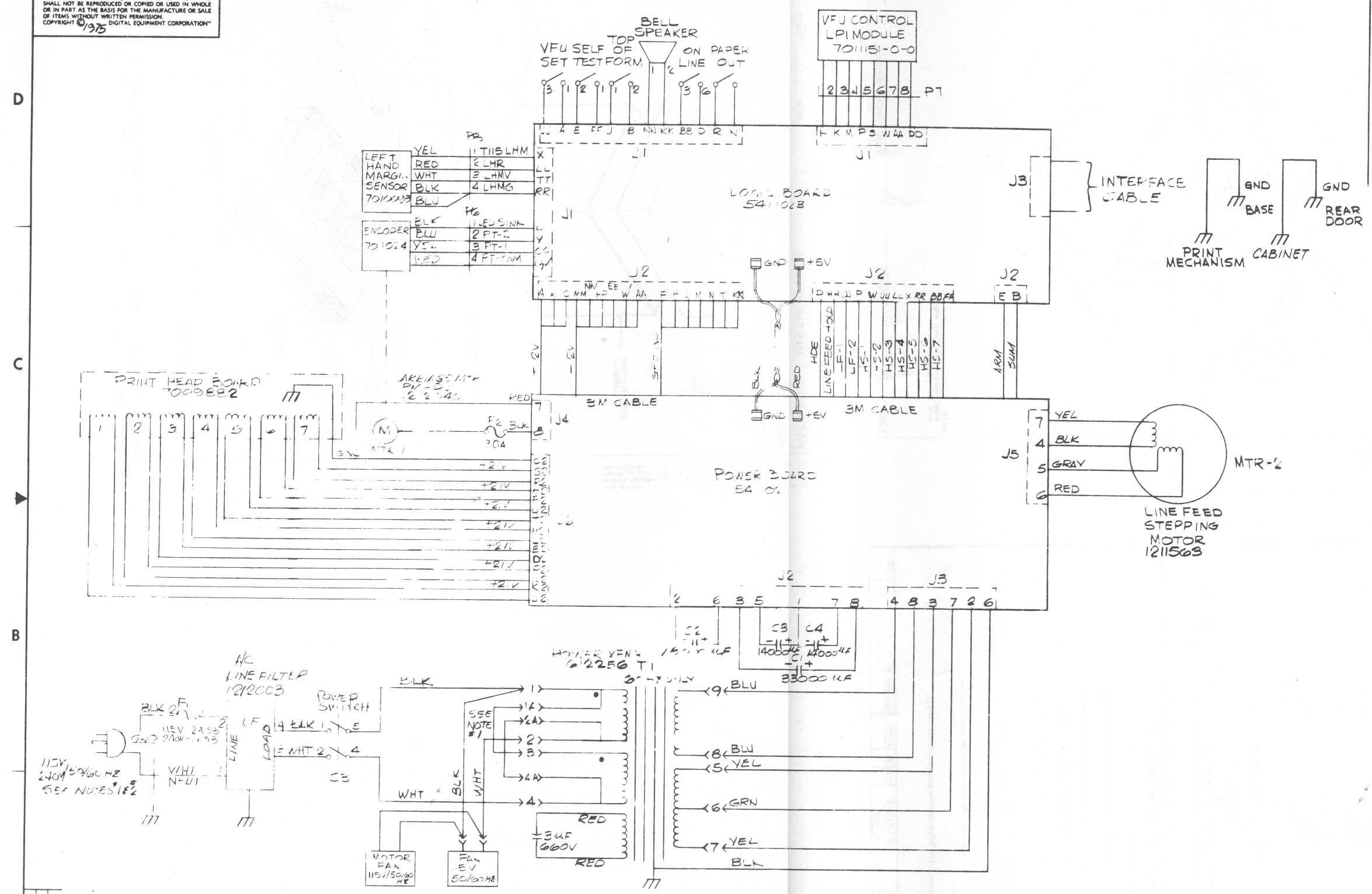
2

1

"THIS DRAWING AND SPECIFICATIONS, HEREIN, ARE THE PROPERTY OF DIGITAL EQUIPMENT CORPORATION, AND SHALL NOT BE REPRODUCED OR COPIED OR USED IN WHOLE OR IN PART AS THE BASIS FOR THE MANUFACTURE OR SALE OF ITEMS WITHOUT WRITTEN PERMISSION. COPYRIGHT © 1975 DIGITAL EQUIPMENT CORPORATION"

0-0-291110Z
 010200Z
 2

- NOTES:
- JUMPERS SHOWN ARE FOR 115V OPERATION. FOR 240V OPERATION REMOVE BOTH JUMPERS ADD ONE JUMPER FROM 2A TO 3
 - FOR 50 HZ OPERATION TRANSFORMER MUST BE REPLACED BY 50 HZ TRANSFORMER #1612257



REV	NO	DATE

DRW: <i>[Signature]</i>	4-11-75	FIRST USED ON	LA180	digital
CHK'D: <i>[Signature]</i>	4/10/75	TITLE	INTERCONNECTION DRAWING	
ENG: <i>[Signature]</i>	4/23/75	PROJECT		
PROD: <i>[Signature]</i>	4/23/75			
NEXT HIGHER ASSY:		SIZE CODE	NUMBER	REV.
E-UA-LA180-0		D.I.C.	7011167-0-0	A
SCALE	-#-	DIST.		
SHEET	1	OF	1	

REV A
 NUMBER 7011167-0-0
 SIZE CODE D I C

DIGITAL EQUIPMENT CORPORATION MAYNARD MASSACHUSETTS

PACKAGING INSTRUCTION

REV: A DATE: 7/75
B 1/76

TITLE DECwriter

MATERIAL REQUIREMENTS

Quantity	Purchase Specification No.	Description
1	9905601	Stitched Tube
1	9905601-01	Full Telescope Cap
1	9905639	Pad with Foam (LA36 LA35 only)
1	9905129-39	Poly Bag
1	9905651	Wood Skid
1	9905651-01	Wood Brace (2 X 3)
2	90-09288	Tee Nut
2	90-09290-03	3/8-16 X 3 Hex-Head Bolt
1	36-12520-0-0	Caution Tag
6 ft	90-09634	Stain Resistant Tape (3M)
1	90-07032	Panduit Cable Tie
20 ft	9905734-02	Polypropylene Strapping
1	9905129-35	Poly Bag

PACKAGING INSTRUCTIONS

- | Step | Procedure |
|------|--|
| 1. | Lift the cover and slide the print head to the left as far as it will go. Slip the Panduit Cable Tie (90-07032) around the ribbon rollers (A and B). Do not over-tighten. Fasten Caution Tag (36-12520-0-0) to tractor drive shaft. Close cover. |
| 2. | Place Pad with Foam (9905639) (foam side down) on top of the LA36/LA35 keyboard. Tape with two (2) strips of glass filament tape (90-09634). Tape back door closed, using two (2) strips of tape. |
| 3. | Place DECwriter on top of Skid Deck (9905651). |
| 4. | Place all hardware and software into Poly Bag (9905129-35) and staple to deck of skid. |
| 5. | Place one strip of CW21 (Custom Wrap) or Microfoam, over each leg of the DECwriter. |
| 6. | Place Wood Brace (9905651-01) on top of legs as far back as it will go to properly align the bolt holes. |
| 7. | Place Hex-Head Bolts (90-09290-03) through the bolt holes in the wood brace; place the Tee Nuts (90-09288) up and underneath the skid deck; then tighten down. |
| 8. | Place a Poly Bag (9905129-39 over the DECwriter. Then, place the Stitched Tube (9905601) over and around the unit. Assemble Full Telescope Cap (9905601-01) and place on top of Stitched Tube. |

NOTE

Make sure that the Stitched Tube is resting on the wood skid base, on all 4 sides.

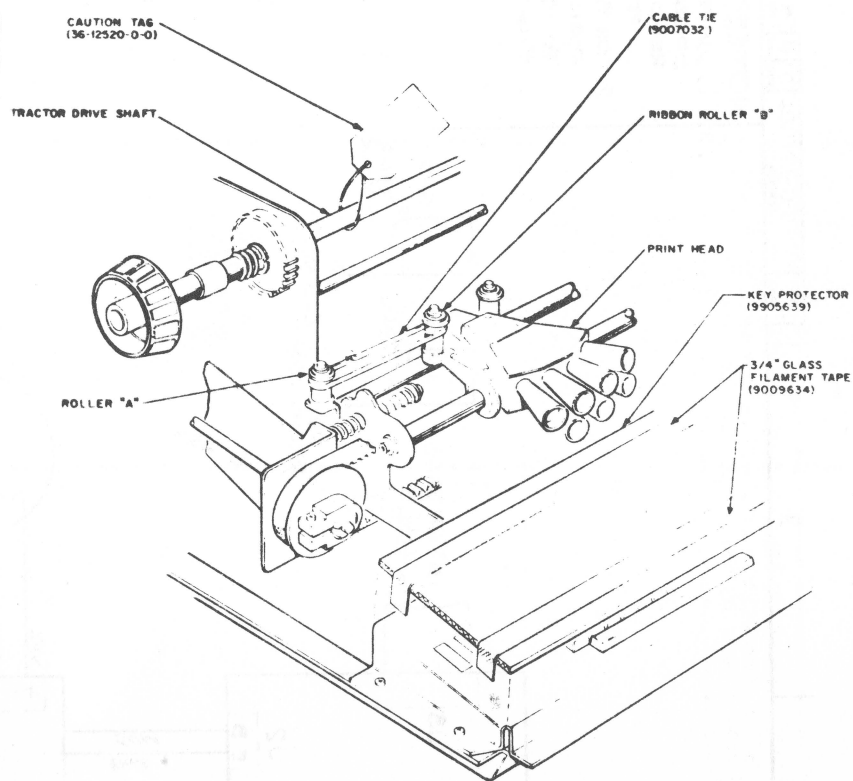
9. Strap in two places as shown in Figure 2. Use Polypropylene strapping (9905734-02).

ENG. Ken Merian 12/29/75 APPD. J. W. Lawrence 12/29/75 SIZE A CODE SP NUMBER 3700131-0-0 REV B
DEC 8-(551)-1031-1-R671
ORA - 129 SHEET 1 OF 3

PACKAGING INSTRUCTION

REV: _____ DATE: _____

TITLE DECWRITER



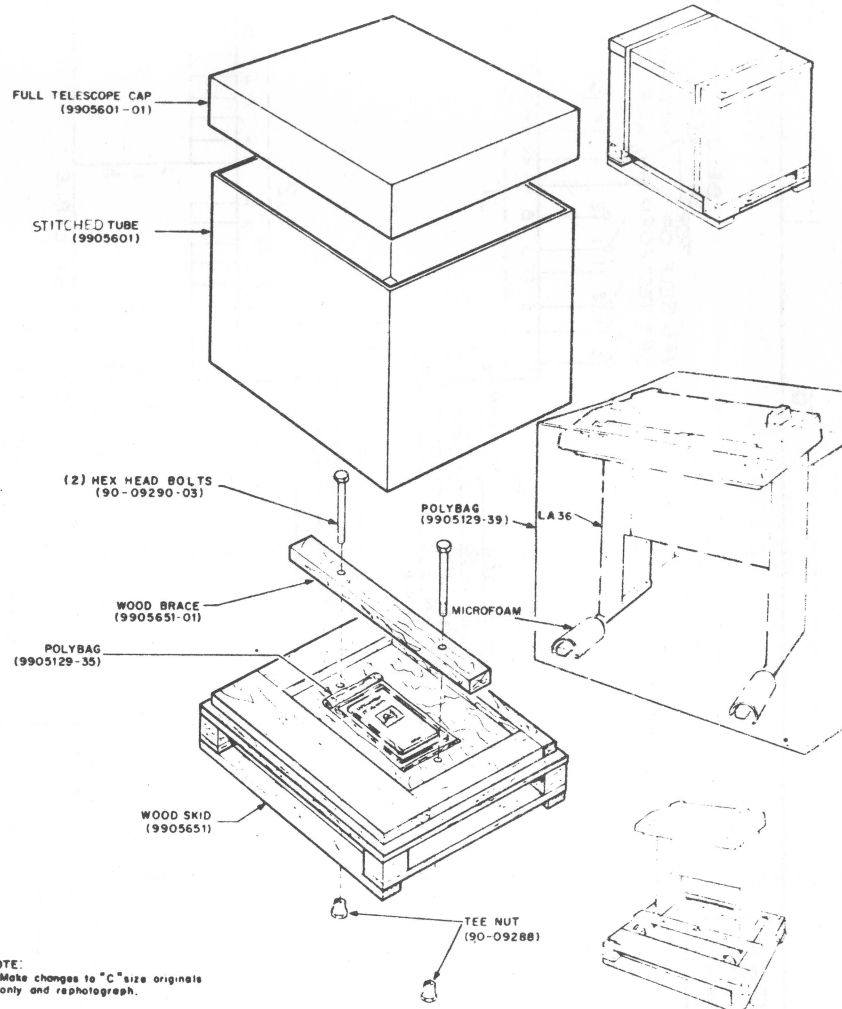
NOTE:
Make changes to "C" size original only and rephotograph.

ENG. _____ APPD. _____ 7/75 SIZE A CODE SP NUMBER 3700131-0-0 REV B
DPC-108 SHEET 2 OF 3

PACKAGING INSTRUCTION

REV: _____ DATE: _____

TITLE DECWRITER



NOTE:
Make changes to "C" size original only and rephotograph.

ENG. Ken Merian 2/24/76 APPD. J. W. Lawrence 2/24/76 SIZE A CODE SP NUMBER 3700131-0-0 REV B
DPC-108 SHEET 3 OF 3

CUSTOMER PRINT SET INDEX

SEQUENCE



SEQUENCE



THIS IS PRINT SET

Drawing Directory B-DD-LAXX-KB
Option arrangement D-AR-LA36-0-1
Wheel assembly C-AD-7009751-0

UNIT VARIATIONS		PRINT SET
VAR	TITLE	
LAXX-KB	Caster set	1

DATE	REV	CHG. NO.	USED ON OPTION/MODEL				TITLE								
			DATE	REV	DATE	REV	SIZE	CODE	NUMBER	REV					
			LA36		DRG			26 Feb 76							
			LA35		CHK'D.			26 Feb 76							
			LA180		PRO LENS.			26 Feb 76							
					PROD.			3/8/76	B	DD	LAXX-KB				
					FIELD SERV.			8/MAR 76	DIST						
			SHEET	1	OF	2									

DEC 16-1972, 1983-1A-R972

DRAWING DIRECTORY

"THIS DRAWING AND SPECIFICATIONS, HEREIN, ARE THE PROPERTY OF DIGITAL EQUIPMENT CORPORATION AND SHALL NOT BE REPRODUCED OR COPIED OR USED IN WHOLE OR IN PART AS THE BASIS FOR THE MANUFACTURE OR SALE OF ITEMS WITHOUT WRITTEN PERMISSION. COPYRIGHT © , DIGITAL EQUIPMENT CORPORATION"

CUSTOMER PRINT SET INDEX

THIS IS PRINT SET

--	--	--	--

SEQUENCE SEQUENCE

Drawing Directory B-DD-LAXX-KD
Basket, paper D-IA-7412016-0-0
Option arrangement D-AR-LA36-0-1

UNIT VARIATIONS		PRINT SET			
VAR	TITLE	1	2	3	4
LAXX-KD	Paper basket				

DEC 16-13251-1062-1A-R972

REVISIONS	REV
CHG. NO.	
DATE	

USED ON OPTION/MODEL	DATE	TITLE			
LA36	26 Feb 76	PAPER BASKET			
LA35	26 Feb 76				
		SIZE	CODE	NUMBER	REV
		B	DD	LAXX-KD	
SHEET 1 OF 2	25 MAR 76	DIST			

CUSTOMER PRINT SET INDEX

SEQUENCE

SEQUENCE

THIS IS PRINT SET

DRAWING DIRECTORY	B-DD-LAXX-KJ
COMPRESSED FONT OPTION ASSY	E-UA-LAXX-KJ-Ø
CHECK-OUT PROCEDURE	A-SP-LAXX-KJ-2

UNIT VARIATIONS		PRINT SET
VAR	TITLE	
LAXX-KJ	COMPRESSED FONT	1

REVISIONS	REV		USED ON OPTION/MODEL	DRN.	D. GILLEY	DATE	10/8/75	TITLE	COMPRESSED FONT					
	CHG. NO.			LA36	CHK'D.	<i>D. Gilley</i>	DATE							
	DATE			PROJ. ENG.	<i>P. E. Nelson</i>	DATE	10-17-75							
				PROD.	<i>P. E. Nelson</i>	DATE	10-17-75							
				FIELD SERV.	<i>AH Beaumont</i>	DATE	10/24/75	SIZE	B	DD	NUMBER	LAXX-KJ	REV	
			SHEET		1	OF	2	DIST						

EN-01062-1A-16-R972-(325)

ELECTRICAL					MECHANICAL										
CUSTOMER PRINT SET	MFG. SET	FIND NO.	DRAWING NO.	REV	NO OF SHT	DESCRIPTION	OPTION NO./FILE DATE	CUSTOMER PRINT SET	MFG. SET	FIND NO.	DRAWING NO.	REV	NO OF SHT	DESCRIPTION	OPTION NO./FILE DATE
X			B-DD-LAXX-KJ	#	2	DRAWING DIRECTORY		X			E-UA-LAXX-KJ-Ø	#	1	COMPRESSED FONT OPTION ASSY	
			A-SP-LAXX-KJ-1			ENGINEERING SPECIFICATION					D-MD-7414908-0-0		1	PULLY, TIMING, 15 TEETH	
X			A-SP-LAXX-KJ-2	#		CHFK-OUT PROCEDURE					C-MD-7414951-0-0		1	CLAMP, PULLEY	
											C-MD-7415010-0-0		1	SPACER, RIGHT-HAND	
											1212446-00		1	PULLEY, TIMING 30 TEETH	
											1211583-02		1	BELT, TIMING	

CUSTOMER PRINT SET CODES
 X = PRINT OF DOCUMENT INCLUDED IN PRINT SET
 C = INCLUDES ALL PRINTS INDICATED ON DOCUMENT
 S = CONFIDENTIAL AUTHORIZED SIGNATURE REQUIRED

TITLE COMPRESSED FONT
 SHEET 2 OF 2
 SIZE CODE B DD
 NUMBER LAXX-KJ
 REV